



Flint Color Guard Regional

Site:

Grand Blanc High School
12500 Holly Road
Grand Blanc, MI 48439

Dimensions: 100' x 70'

Front Side Bleacher Rows: 25 **Seating Capacity:** appx 950

Approximate Ceiling Height: appx 35 ft

There are no stairs to contend with in the competition area.

There are no permanent obstructions above the competition floor.

Color guards do not enter the competition area directly from the outdoors.

There is electrical power available at the front and back sideline.

Color guards do not exit the competition area directly to the outdoors.

The hallways will be utilized for prop storage prior to the competition.

The performance floor is a wooden gym floor with a one piece black vinyl tarp measuring 100' X 70' covering the gym floor.

Half of the auxiliary gym will be utilized to fold floors after the performance.

There are separate areas for body and equipment.

It is appx 1 minute between body and equipment.

Body Warm Up

Wrestling Room

Dimensions: 50' x 20'

No obstructions in the area.

Music may be used in body warm up at moderate levels to be determined per the contest director.

Equipment Warm Up

Half of Auxiliary Gym

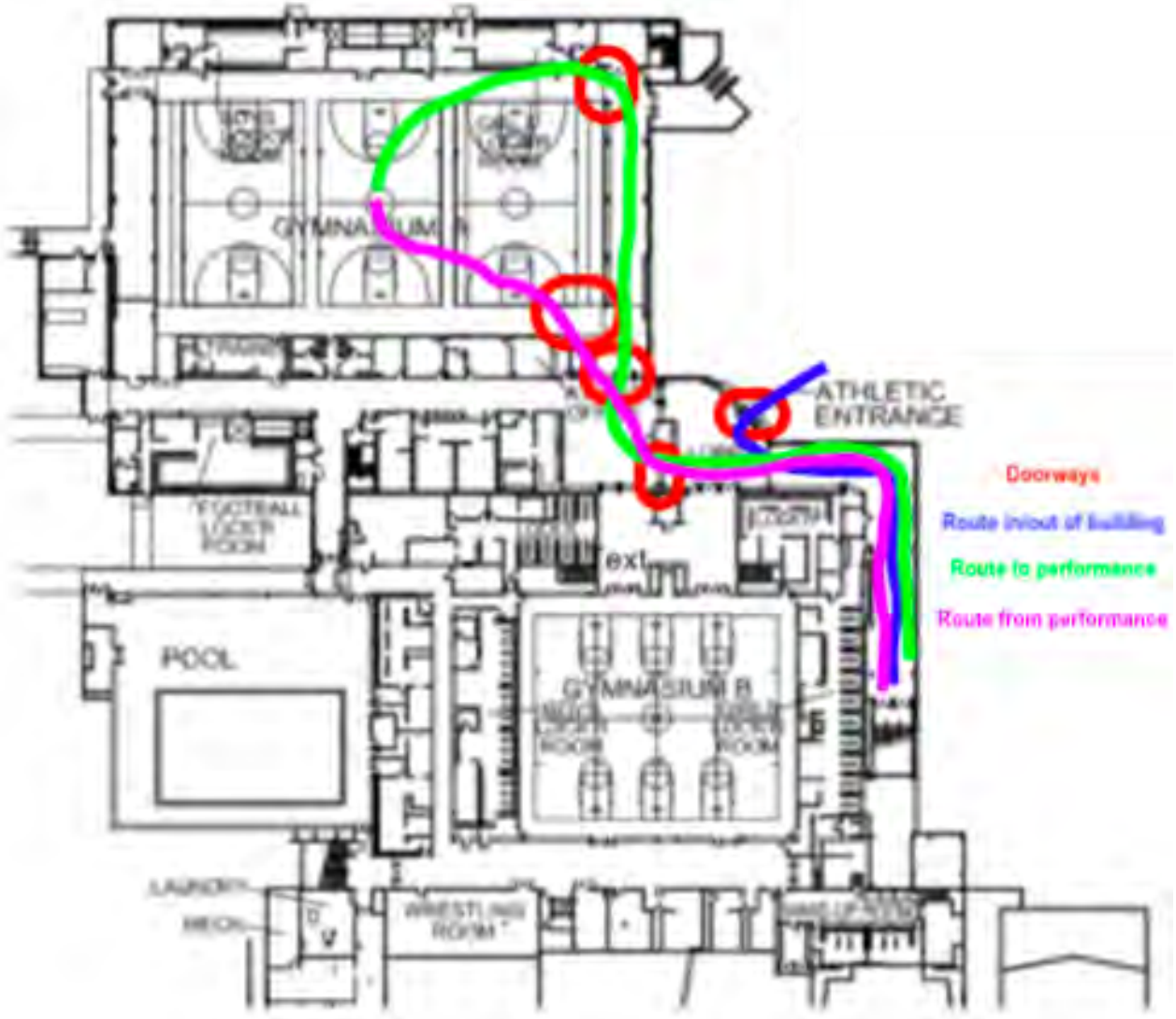
Dimensions: 35ft. X 50ft.

Approximate Ceiling Height: appx 35 ft

No obstructions in the area.

Music may be used in equipment warm up at moderate levels to be determined per the contest director.

The above information is being provided to you in order give you the most complete information we currently have on this contest. All information is subject to change either before or during the event by contest personnel based on need.



Doorways

Route in/out of building

Route to performance

Route from performance



Prop entrance into building 8 ft x 6 ft with center bar removed



Prop entrance leads right into the designated prop storage area. It continues to the right at the end of the hall for another 50 - 75 feet. Opening is 12 ft x 9 ft



Doors leading from prop storage area leading to performance gym Each opening is 8 ft x 6 ft with no center bar.



Doors leading into the performance gym entrance at the end of the hall from prop storage area. Each opening is 8 ft x 6 ft with no center bar.



Entrance into the performance gym 9 ft by 9 ft



Exit from performance gym back to prop storage area. Same doors as entrance. Each door is 8 ft x 6 ft.



Exit from performance gym back to prop storage area. Same doors as entrance. Each door is 8 ft x 6 ft



Prop exit out of building is same as entrance and is 8 ft by 6 ft with center bar removed.

Below is a link to video of the walk into the building for props, into the storage area, out of the storage area to performance and then out of performance and back to the storage area and out of the building.

https://drive.google.com/file/d/1cwHXDJBF_St7tEN1jzPm1KfgNzXYAI78/view?usp=sharing