



# 2019 East Percussion and Winds Power Regional Contest Information

**Facility:** Pine Belt Arena  
1245 Old Freehold, Hooper Ave.  
Toms River, NJ 08753

## Emergency Contacts (day of show only)

Heather Kaynes—651-336-0292  
Scott Litzenberg - 610-324-0660

**Prelims Only—\$20**  
**Finals Only—\$23**  
**Combo Pass—\$34**

## Ticket prices include a \$2 arena ticketing fee.

Each ensemble will receive ten (10) staff passes unless a PLUS pass was purchased. A PLUS pass allows an additional seven (7) staff for a total of seventeen (17). PLUS passes are NOT available for purchase at the event.

Per arena guidelines all backpacks, purses, etc. will be searched prior to entry.

## General Contest Info

**TO LISTEN TO JUDGES COMMENTARY:** Each director should be set up with an account through CompetitionSuite. This is the **ONLY WAY** to receive judge's commentary for any WGI event. Instructions to do this are available [here](#).

**TARPS:** No unfolded performance tarps allowed in parking lots. You may use, as long as space allows without violating any fire codes, a practice tarp and it must be labeled "Practice." Violation of this policy is subject to penalty.

**INSPECTION:** Located in pre-warm up hallway.

**WARM-UP AREA:** All maps are in this packet. Ensembles should report one hour prior to performance time.

**PRELIM SCORES:** Posted in the lobby.

**CRITIQUE:** You **MUST** sign up for critique upon check in.

**RECAPS AND FINALS INFO:** Pick up 30 minutes after conclusion of your class prelims at the announcer's table.

**FINALS SCHEDULE:** The finals schedule will be made available to you after it has been determined.

**VIDEO TAPING:** No video cameras will be allowed in any contest venue and no authorized space will be provided for groups to record their performance. Any liability associated with unauthorized recordings will rest with the individual or organization making the recording. WGI does not condone, nor accept any liability for, any unauthorized recording during the event.

**BOOSTER SALES:** Megan Harmon in the WGI office.  
937-247-5919 ext. 304

**PLEASE NOTE:** WGI enforces a **NO SMOKING** policy at all WGI Regionals.

Don't forget to check out the [Regional Reminders!](#)





## Accessing Judge Commentary

**You must have already activated your Competition Suite Account Profile in order for you to be able to listen to WGI judge commentary.**

### **From a Smart phone:**

Download the Commentary app:

- Apple: <https://itunes.apple.com/us/app/competitionsuite-commentary/id594112091?ls=1&mt=8>
- Android: <https://play.google.com/store/apps/details?id=com.competitionsuite.commentary>

### **From the website:**

1. Visit <http://competitionsuite.com/login/> and log in using the password you set up in your CompetitionSuite profile.
2. Click on "Performances" on the left side of the page under your group's name.
3. Click on the appropriate commentary file you'd like to download or listen to.

### **Support**

If you have questions, feel free to contact support at [help@competitionsuite.com](mailto:help@competitionsuite.com).



## 2019 East Power Regional Judge Panels

### PSA

Effect-Music – Chad Heiny

Effect-Visual – Mark Waymire

Music – Lee Beddis

Visual – Jay McArthur

T&P – Bob Molloy

### PIA/PSCA/PSO/PIO/PIW

Effect-Music – Scott Koter

Effect-Visual – Matt Stevens

Music – Tom Rarick

Visual – Jason Harvey

T&P – Sarah Goslin

**\*\* Double panel for percussion finals**

# WGI Percussion Power Regional Toms River, NJ

## Parking and Site Info

- Enter off of Old Freehold Road
- Buses Parking marked lot
- Trucks will hold until sent to the unloading area at assigned time
- Trucks must move to re-loading area once unloaded
- Unload immediately following the performance and then park in Bus lot.



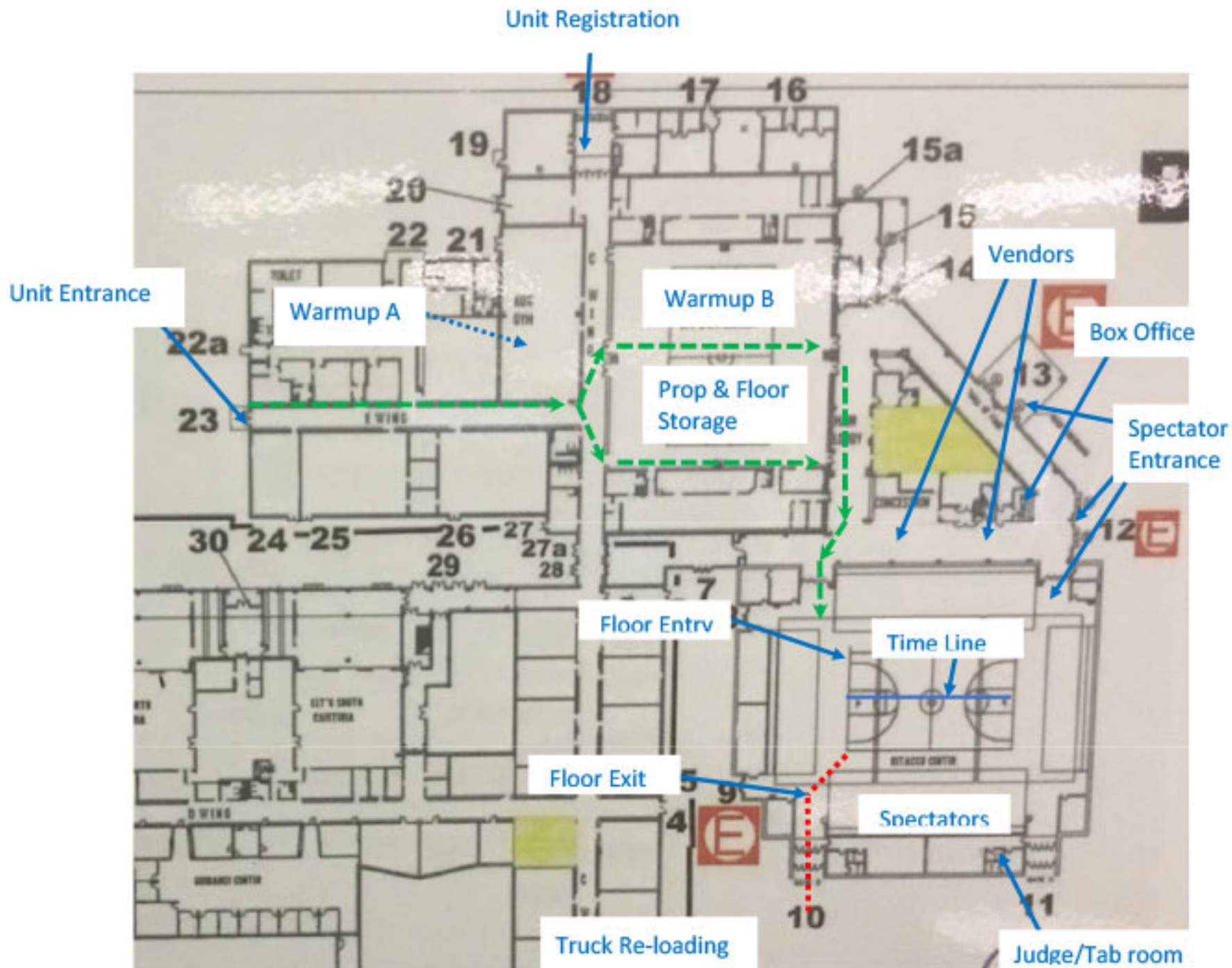
# WGI Percussion Power Regional

## Toms River, NJ

Unit Entrance Route 

Unit Exit Route 

Unit Parking/Unloading





## East Percussion and Winds Power Regional Toms River, NJ

All WGI contest sites must have a minimum of seventy by one hundred feet (70' x 100') to accommodate a "safety zone" of five (5) feet from any spectator seating. If no spectators are seated on the left and right sides, then the safety zone will be eliminated on the left and right sides of the competition area and extend to the wall.

The "competition area" at this event measures 72'X106'. All performing groups must be prepared to perform within that area. Floors (tarps) may not extend into the safety zones per rules found in the WGI Adjudication Manual and Rulebook

