



# IMPORTANT HEALTH & SAFETY UPDATES

# MASKS REQUIRED

## WGI CORNING COLOR GUARD REGIONAL

**EVERYONE IN ATTENDANCE AT THIS REGIONAL MUST WEAR A MASK.**

Performers and everyone with the group must wear their masks at all times, including while in warm up and on the performance floor.

*Those who choose not to follow this mask mandate may be asked to leave without a refund or the group may be disqualified.*

**THERE COULD BE DIFFERENT PROTOCOLS AT EACH WGI EVENT, PLEASE READ  
THROUGH ALL INFORMATION CAREFULLY.**

# **CORNING COLOR GUARD**

## **REGIONAL CONTEST INFORMATION**

**SATURDAY, FEBRUARY 5, 2022**



---

### **LOCATION**

Corning Painted Post High School  
201 Cantigny Street  
Corning, NY 14830

---

### **EMERGENCY CONTACTS (DAY OF SHOW ONLY)**

CONTEST ADMINISTRATOR: Michelle Wenink - 585-329-0735/ [michelle@wgi.org](mailto:michelle@wgi.org)  
EVENT PARTNER: Joe Stork, Band Director - 585-737-2999/ [jstork@cppmail.com](mailto:jstork@cppmail.com)  
EVENT PARTNER: Dusty Hewit, Show Coordinator - 607-426-8331/ [dustin.hewit@googlemail.com](mailto:dustin.hewit@googlemail.com)  
EVENT PARTNER: Kansass Smith, Show Coordinator - 607-346-2842/ [kansass.smith@gmail.com](mailto:kansass.smith@gmail.com)

---

### **JUDGE PANEL**

EQ Jackie Campbell  
MV Jeff Stewart  
DA Izzy Delgado  
GE Paul Lampkin (LJ) & Brian Murphy  
T&P Gillian Huling

---

### **COMPETITIONSUITE DETAILS**

ACCESSING YOUR GROUP - <https://help.competitionsuite.com/article/16-accessing-your-group>

ADDING YOUR STAFF - <https://help.competitionsuite.com/article/61-adding-staff-members>

ACCESSING COMMENTARY - <https://help.competitionsuite.com/article/17-accessing-commentary>

MUSIC UPLOADS - <https://help.competitionsuite.com/article/74-uploading-performance-music>

*Score Summary Sheets are also located in your CompetitionSuite account with your overall score.*

---

### **ADDITIONAL REGIONAL INFO**

PRELIMS LOGISTICAL SCHEDULE - <https://tinyurl.com/2p87yqx9>

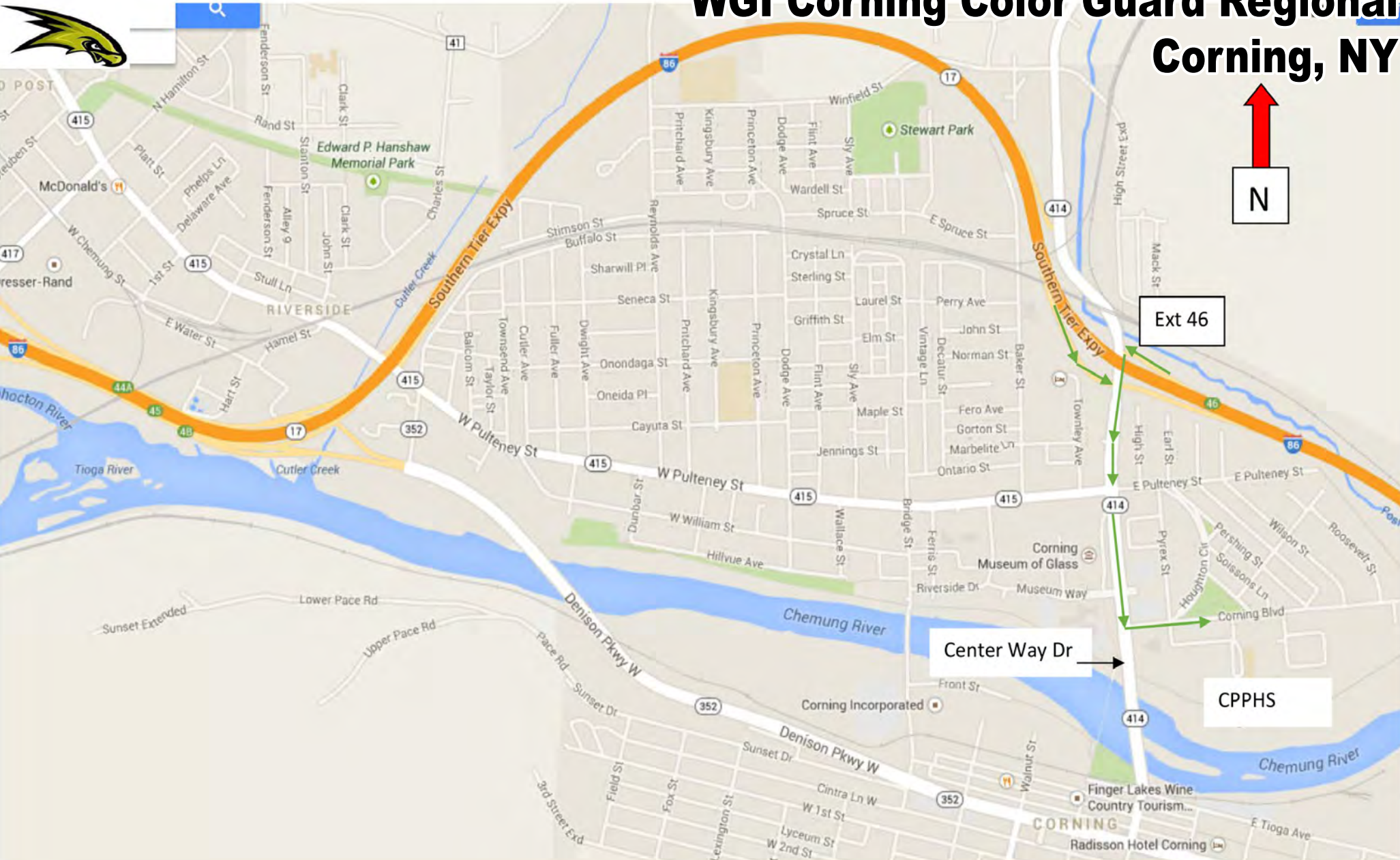
FINALS LOGISTICAL SCHEDULE - <https://tinyurl.com/2xw5578w>

WARM UP AREAS – Music is permitted in Body Warm Up. There will be a system provided.  
Music is not permitted in Equipment Warm Up as sound can be heard in the performance area.

RETREAT – Each group may designate one individual to represent the group on the floor during retreat. If your group is not attending retreat, please designate one individual (parent, staffer, or designated representative) to stay and retrieve your award at the conclusion of retreat. Please inform the Contest Administrator on site if your group will not be attending retreat.

REGIONAL REMINDERS – <https://wgi.org/wp-content/uploads/2022/01/2022CGRegionalReminders.pdf>

# WGI Corning Color Guard Regional Corning, NY



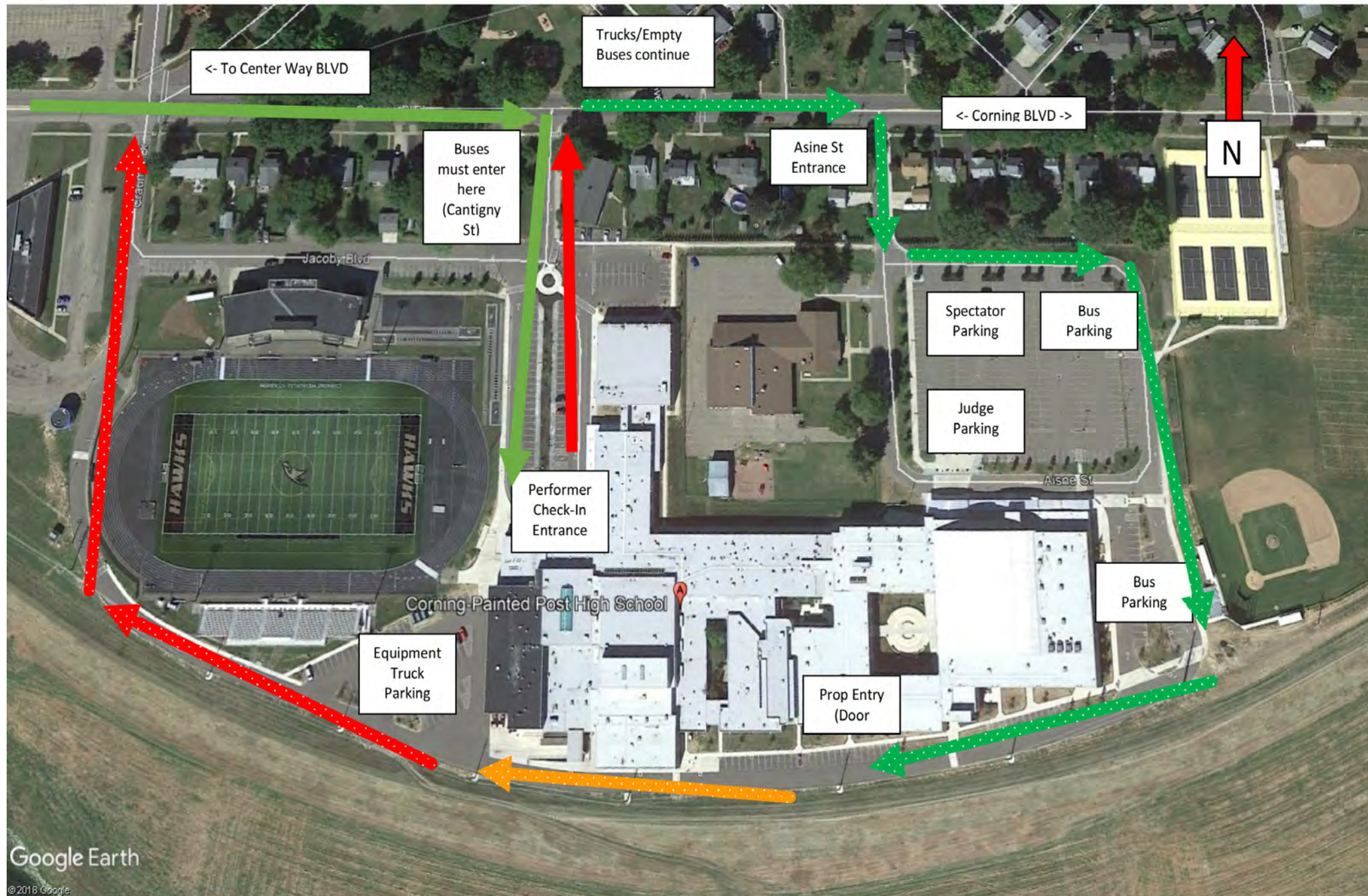
**Hwy I-86, Take Exit 46**  
**Head South on Center Way Drive (Rt. 414S)**  
**Turn Left at 4th Light (from the West), 5th Light from the East (Fire Station on the Corner)**

**The address you want to use is 201 Cantigny St, Corning, NY, 14830, however the Equipment Truck entrance and Spectator Parking are past this entrance to Asine St. After check-in, we will direct your chaperones to the prop unloading and your performers and staff upstairs.**





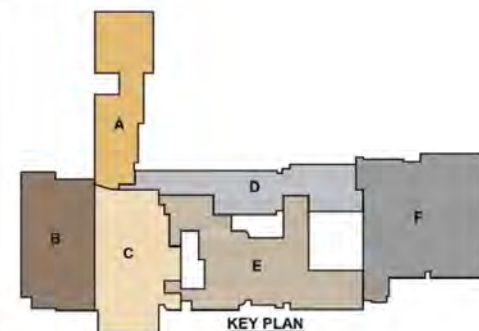
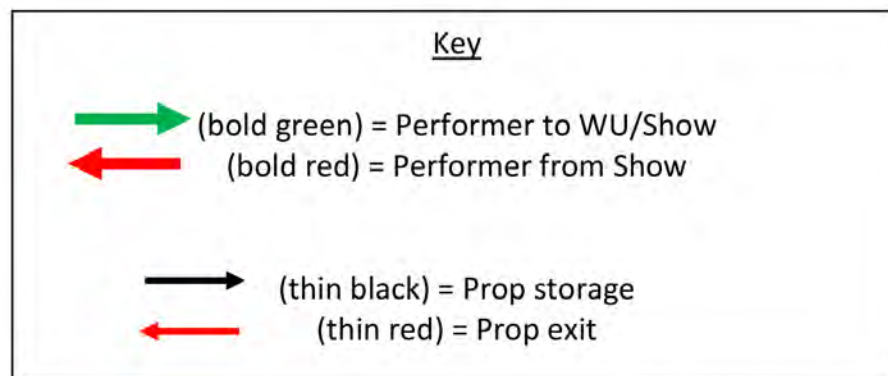
# WGI Corning Color Guard Regional Corning, NY



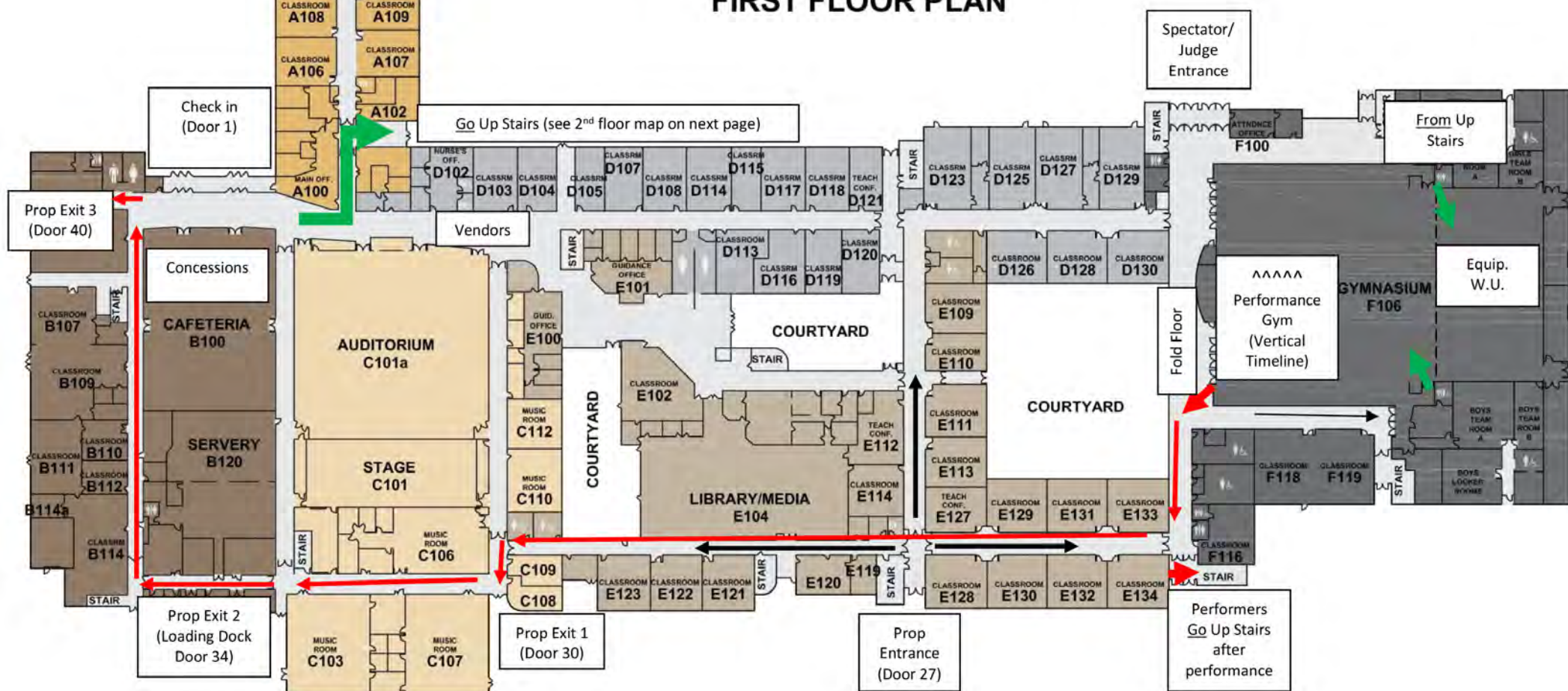




# WGI Corning Color Guard Regional Corning, NY

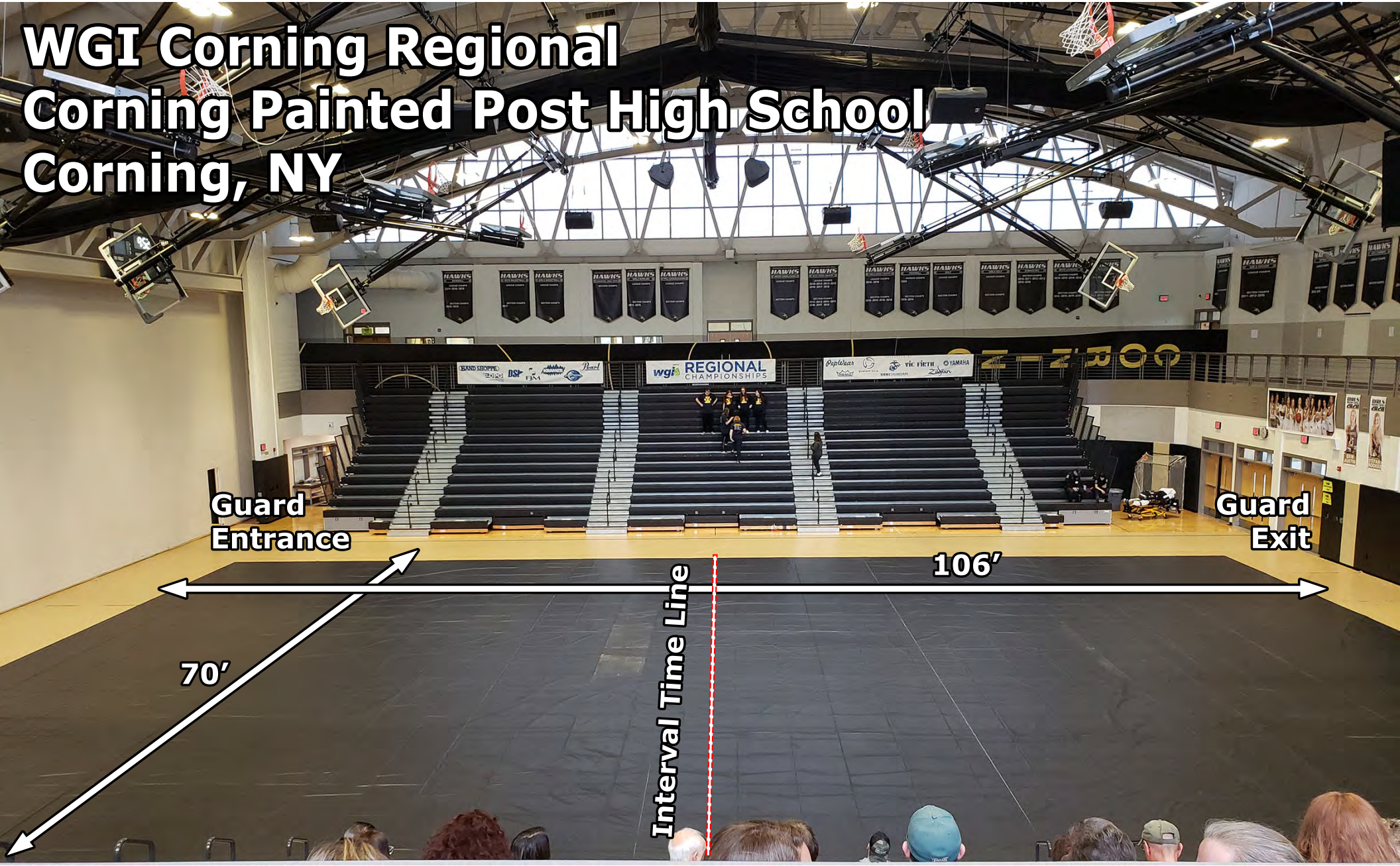


## FIRST FLOOR PLAN









# WGI Corning Regional Corning Painted Post High School Corning, NY

Guard  
Entrance

Guard  
Exit

Interval Time Line

106'

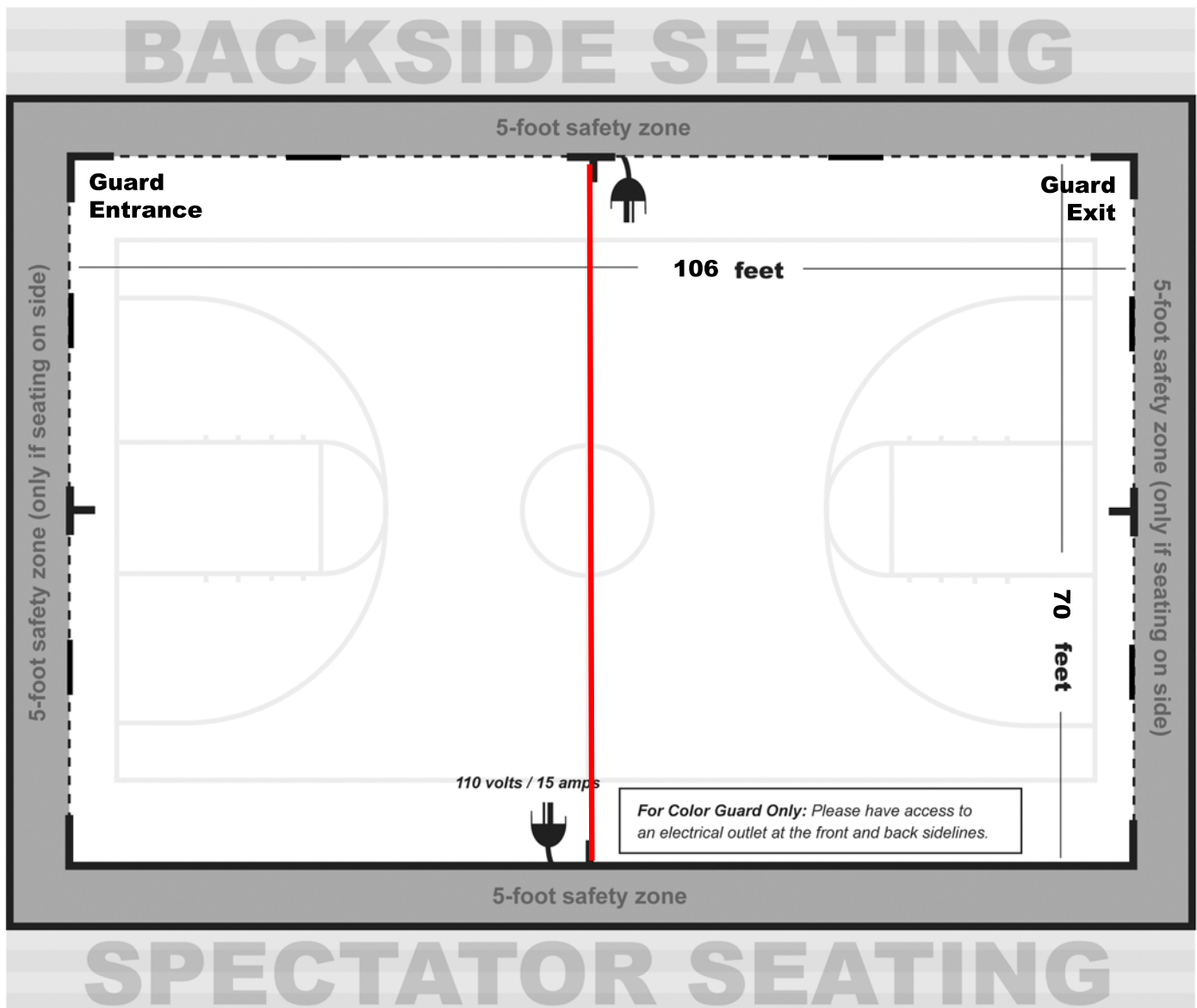
70'



## **WGI Corning Regional Corning Painted Post High School, Corning, NY Competition Area**

All WGI contest sites must have a minimum of seventy by one hundred feet (70' x 100') to accommodate a "safety zone" of five (5) feet from any spectator seating. If no spectators are seated on the left and right sides, then the safety zone will be eliminated on the left and right sides of the competition area and can extend to a maximum of 106'X 78'.

The "competition area" at this event measures 106'X 70'. All performing groups must be prepared to perform within that area. Floors (tarps) may not extend into the safety zones per rules found in the WGI Adjudication Manual and Rulebook.





## ***From the WGI Policy Manual***

### **4.120 Sound Policy (Color Guard)**

- All color guards should do a sound check at the designated times provided in the contest information packet to ensure the playability of any device or CD. Color guards should check the soundtrack at multiple places in the music to verify playability of any device
- Color guards should still do a sound check if they are using the WGI Music Upload in CompetitionSuite to ensure everything is correct.
- Color guard is responsible for providing the method that the music will be played, e.g. CD, MP3, computer, etc. Each color guard should have two methods to play their soundtrack in the event one does not work.
- Color guard must provide their music in a timely manner to the designated sound operator. Any delay in providing music is the responsibility of the color guard.
- Color guards using the Music Upload process through CompetitionSuite should have a backup using another device type such as an MP3 player, iPhone, or CD.
- Color guard must have a designated person at the sound table to operate any device provided to play music such as MP3 players or computers. Guard's representative is responsible to set up and play device. If a CD is provided, the color guard representative must instruct the sound operator as to what track or other relevant information is needed to start the music when directed by the contest Timing and Penalty judge or after the color guard's introduction.
- If the color guard has an issue with the music such as music is too soft, it begins in the wrong place or skips, the color guard's representative must make the decision to stop the music and tell the operator to stop the music. If the color guard representative chooses not to stop and the color guard completes their performance, the color guard will not be offered an opportunity to perform again.
- Interval timing will continue as the color guard resets and begins again. The Contest Administrator has the sole discretion in waiving any timing penalty due to the restart. If the stoppage is due to faulty sound equipment, operator error or an unexplained reason, overtime penalty may be waived.
- Issues related to the equipment provided by the color guard, quality of the CD or the color guard's representative error (using wrong playlist on MP3, etc.) will result in the actual interval timing being used and penalties, if any, being assessed.
- Volume direction must come from the color guard representative at the sound table. Direction will not be taken from the audience viewing area or across the floor. Final volume discretion is given to the sound operator based on their equipment and the Chief Judge who ultimately determines an appropriate volume level.
- The color guard representative may provide direction to the sound operator during the performance regarding equalization.
- It is the responsibility of the color guard to provide their music for each performance and to ensure that their soundtrack is working appropriately. CDs may not be left at sound table between performances.
- Under no circumstances will verbal abuse of the sound operator be tolerated. Penalties will be assessed per current WGI rules