



Huntsville Color Guard Regional

Site:

Bob Jones High School
650 Hughes Road
Madison, AL 35758

Dimensions: 106' x 77'

Front Side Bleacher Rows: 17

Seating Capacity: appx 800

Approximate Ceiling Height: appx 30 ft

There is a scoreboard appx 30 ft above the performance floor.

Color guards do not enter the competition area directly from the outdoors.

There is electrical power available at the front and back sideline.

Color guards exit the competition area directly to the outdoors.

There is a set of 5 steps as the groups exit the building but there will be a ramp provided.

Part of the cafeteria space will be utilized for prop storage prior to the competition.

The performance area will have a dark grey tarp measuring appx 105' x 77' covering the entire wooden gym floor.

There is no indoor space to fold floors after performances. In case of inclement weather, an indoor option will be made available.

The distance from body warm up to equipment warm up is approximately 1 minute.

The distance from equipment warm up to the performance gym is less than 1 minute.

There are separate areas for body and equipment.

Body Warm Up

Cafeteria

Dimensions: 59ft. X 52ft.

There are no obstructions in the area.

Music may be used in body warm up at moderate levels to be determined by the Contest Administrator.

Equipment Warm Up

Auxiliary Gym

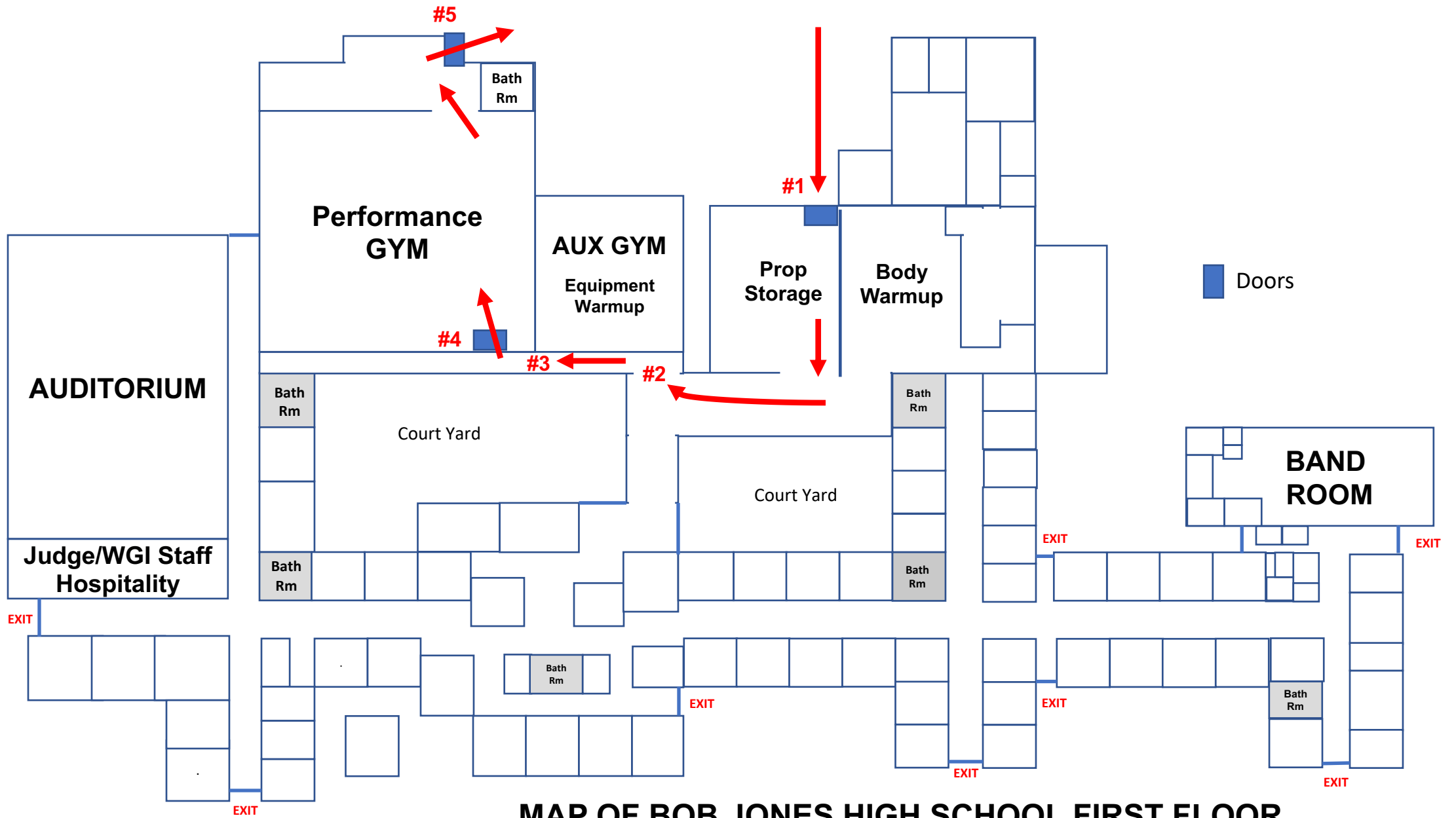
Dimensions: 95ft. X 66ft.

Approximate Ceiling Height: 30'

No obstructions in the area

Music may be used in body warm up at moderate levels to be determined by the Contest Administrator.

The above information is being provided to you in order give you the most complete information we currently have on this contest. All information is subject to change either before or during the event by contest personnel based on need.



MAP OF BOB JONES HIGH SCHOOL FIRST FLOOR

#1- Outside entry
for prop/floor
storage



#2- Doorway from prop storage to hallway to performance gym
(Doors will be removed)



#3- Second doorway
in hallway to
performance gym



#4- Doorway from the hallway into the performance gym



#5- Doorway from the performance gym to the outside
(Bars will be removed)

