



Salt Lake City Color Guard Regional

Site:

Mountain Ridge High School
14100 Sentinel Ridge Boulevard
Herriman, UT 84096

Dimensions: 90' x 70'

Front Side Bleacher Rows: 16 **Seating Capacity:** appx 1350

Approximate Ceiling Height: appx 30 ft

There are stairs between body warm up and equipment warm up in the flow of the contest.

Color guards do not enter the competition area directly from the outdoors.

There is electrical power available at the front and back sideline.

Color guards do not exit the competition area directly to the outdoors.

Hallways will be utilized for prop storage prior to the competition.

The performance area is a standard gym floor with a black vinyl tarp measuring appx 100'x80' covering the competition space.

There will be indoor space to be utilized to fold floors after the performance.

The distance from body warm up to equipment warm up is approximately 1 minute.

The distance from equipment warm up to the performance gym is approximately 1 minute.

There are separate areas for body and equipment.

Body Warm Up

Dance Room

Dimensions: 60ft. X 30ft.

There are no obstructions in the area.

Music may be used in body warm up at moderate levels to be determined per the contest director.

Equipment Warm Up

Auxiliary Gym

Dimensions: 100ft. X 70ft.

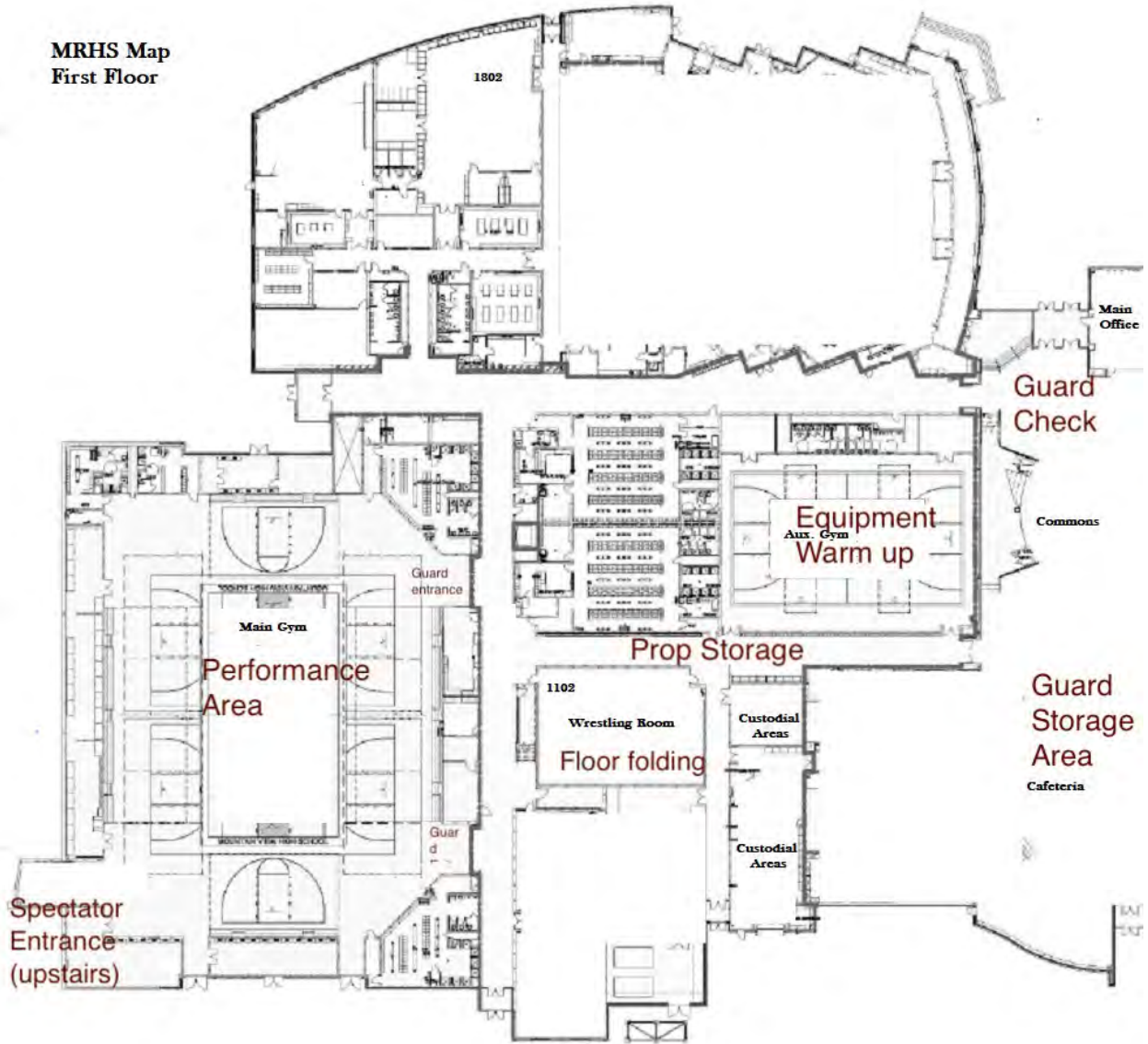
Approximate Ceiling Height: 30'

No obstructions in the area

Music may be used in equipment warm up at moderate levels to be determined per the contest director.

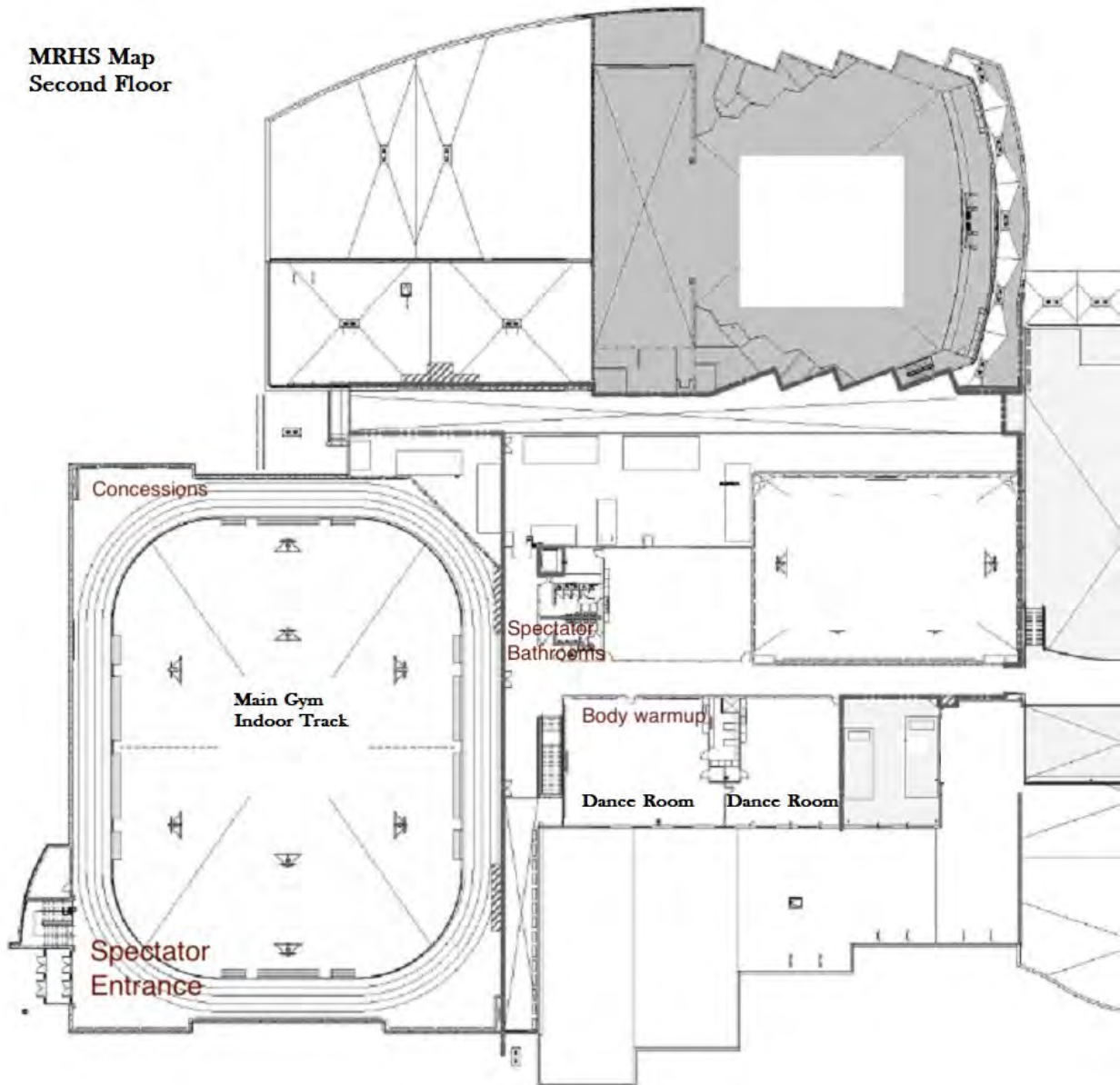
The above information is being provided to you in order give you the most complete information we currently have on this contest. All information is subject to change either before or during the event by contest personnel based on need.

**MRHS Map
First Floor**



The above information is being provided to you in order give you the most complete information we currently have on this contest. All information is subject to change either before or during the event by contest personnel based on need.

**MRHS Map
Second Floor**



The above information is being provided to you in order give you the most complete information we currently have on this contest. All information is subject to change either before or during the event by contest personnel based on need.

Front entrance: Width, 6ft, 11 inches. Height, 7ft



The above information is being provided to you in order give you the most complete information we currently have on this contest. All information is subject to change either before or during the event by contest personnel based on need.



Hallway: Width 5ft 7 inches, Height 9ft

The above information is being provided to you in order give you the most complete information we currently have on this contest. All information is subject to change either before or during the event by contest personnel based on need.



Gym doors, 5ft, 11 inches, height 7ft

All middle section pieces are removable.

The above information is being provided to you in order give you the most complete information we currently have on this contest. All information is subject to change either before or during the event by contest personnel based on need.