

# 2019 Atlanta Regional Contest Information

**Facility:** Lambert High School  
805 Nichols Rd.  
Suwanee, GA 30024

## Emergency Contacts (day of show only)

Jeanne Strong -720-641-3945

## Ticket Prices/Info

Prelims—\$15  
Finals—\$20  
Combo—\$25

Cash and all major credit cards accepted.

## General Contest Info

**TO LISTEN TO JUDGES COMMENTARY:** Each director should be set up with an account through CompetitionSuite. This is the **ONLY WAY** to receive judge's commentary for any WGI event. Instructions to do this are available [here](#).

**TARPS:** No unfolded performance tarps allowed in parking lots. As long as space allows without violating any fire codes, you may use a practice tarp and it must be labeled "Practice." Violation of this policy is subject to penalty.

**PRELIM SCORES:** Posted in the gym lobby area.

**CRITIQUE:** You **MUST** sign up for your critique up-on check in.

**RECAPS AND FINALS INFO:** You will received a competition suite text when the finals schedule is ready.

**FINALS SCHEDULE:** You will receive a text message via competition suite when the finals schedule is available.

**VIDEO TAPING:** No video cameras will be allowed in any contest venue and no authorized space will be provided for groups to record their performance. Any liability associated with unauthorized recordings will rest with the individual or organization making the recording. WGI does not condone, nor accept any liability for, any unauthorized recording during the event.

**PLEASE NOTE:** WGI enforces a **NO SMOKING** policy at all WGI Regionals, including practice facilities.

Don't forget to check out the [Regional Reminders!](#)





## 2019 Atlanta Judge Panels

### Winds

Overall Effect – Tim Gray

Visual Analysis – Jeff Bridges

Music Analysis – Beth Fabrizio

T&P – Mike Lynch

### PSA/PIA

Effect-Music – Bret Kuhn

Effect-Visual – Jeff Gentry

Music – JJ Pipitone

Visual – Kevin Bell

T&P – Mike Lynch

### PSO/PIO/PSW/PIW

Effect-Music – Ed Argenziano

Effect-Visual – Bobby Jones

Music – Brian Mason

Visual - Sal Adamo

T&P – Benja Russell

# WGI Atlanta Regional Lambert HS



Nichols Rd.

Spectator Entrance

Spectator Parking

Group Parking

Spectator Parking

Performance Gym

Group Chek In

Group Parking

Bus/Truck Unloading

Sharon Rd./Old Atlanta Rd.

Group Entrance

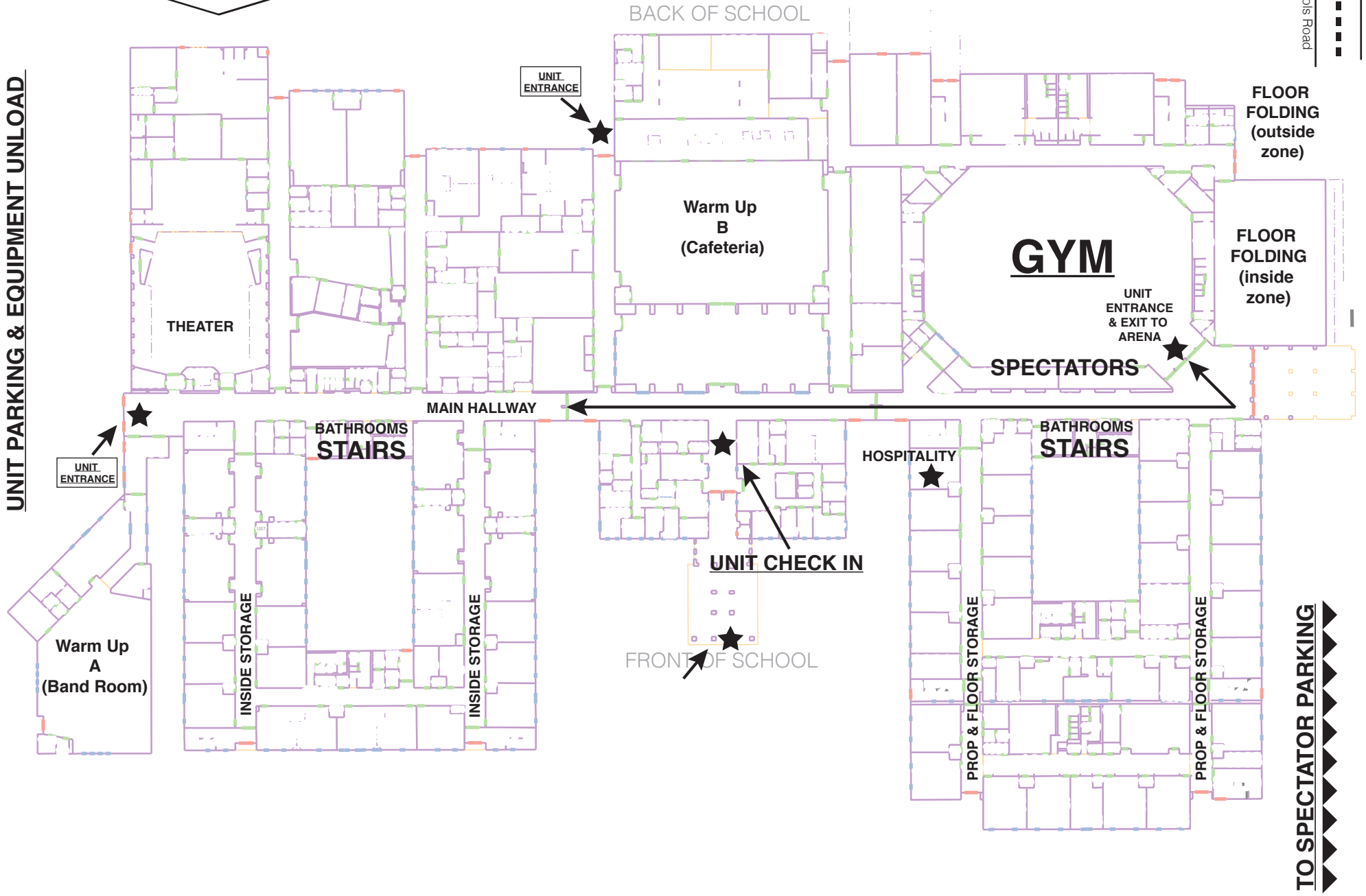
James Burgess Rd.

Units Enter Campus From  
Old Atlanta Road

Old Atlanta Road

Nichols Road

**UNIT PARKING & EQUIPMENT UNLOAD**



FLOOR FOLDING  
(outside zone)

FLOOR FOLDING  
(inside zone)

**GYM**

UNIT ENTRANCE & EXIT TO ARENA

**SPECTATORS**

MAIN HALLWAY

**THEATER**

Warm Up  
B  
(Cafeteria)

BATHROOMS  
STAIRS

HOSPITALITY

BATHROOMS  
STAIRS

Warm Up  
A  
(Band Room)

INSIDE STORAGE

INSIDE STORAGE

**UNIT CHECK IN**

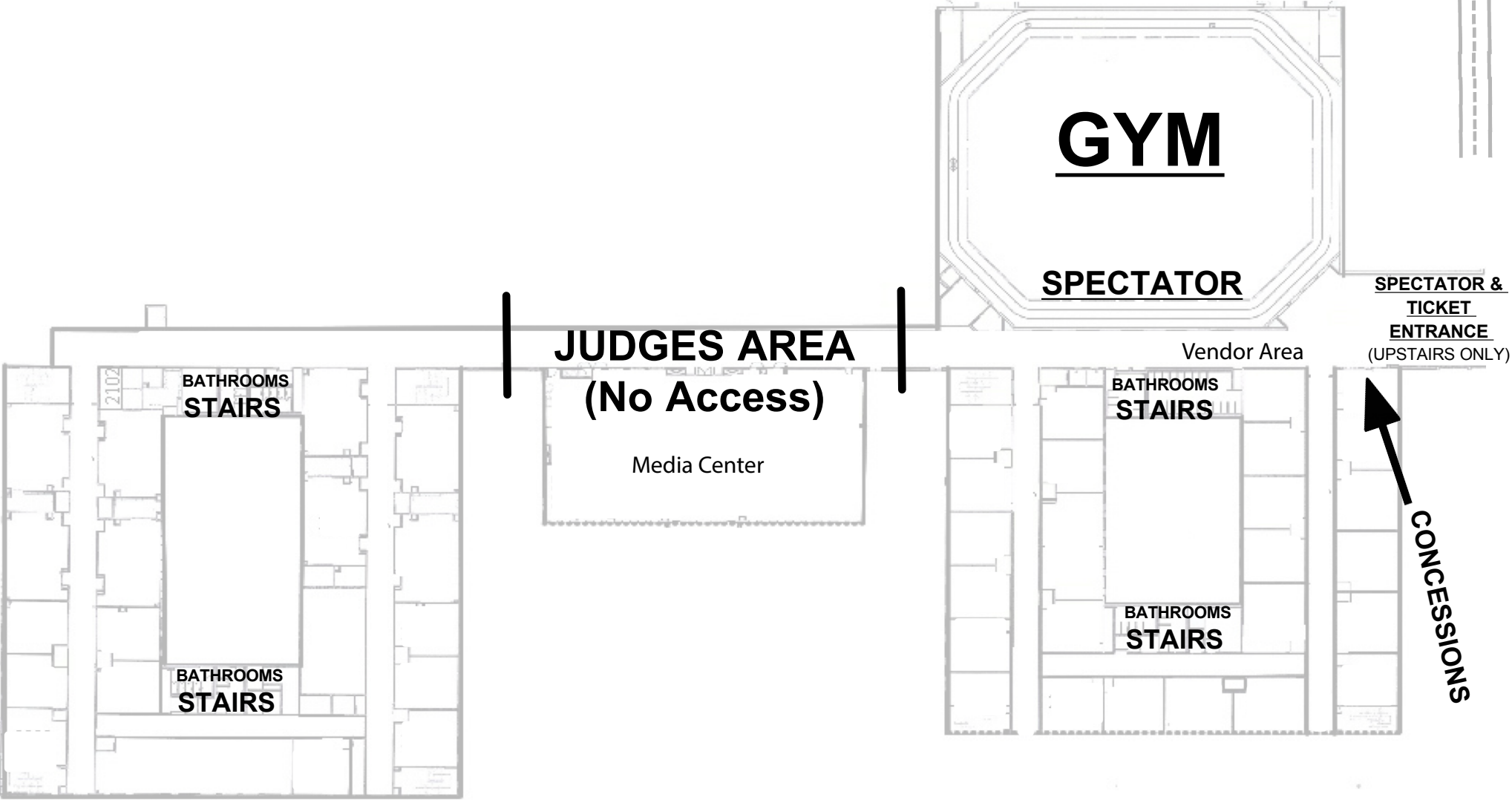
FRONT OF SCHOOL

PROP & FLOOR STORAGE

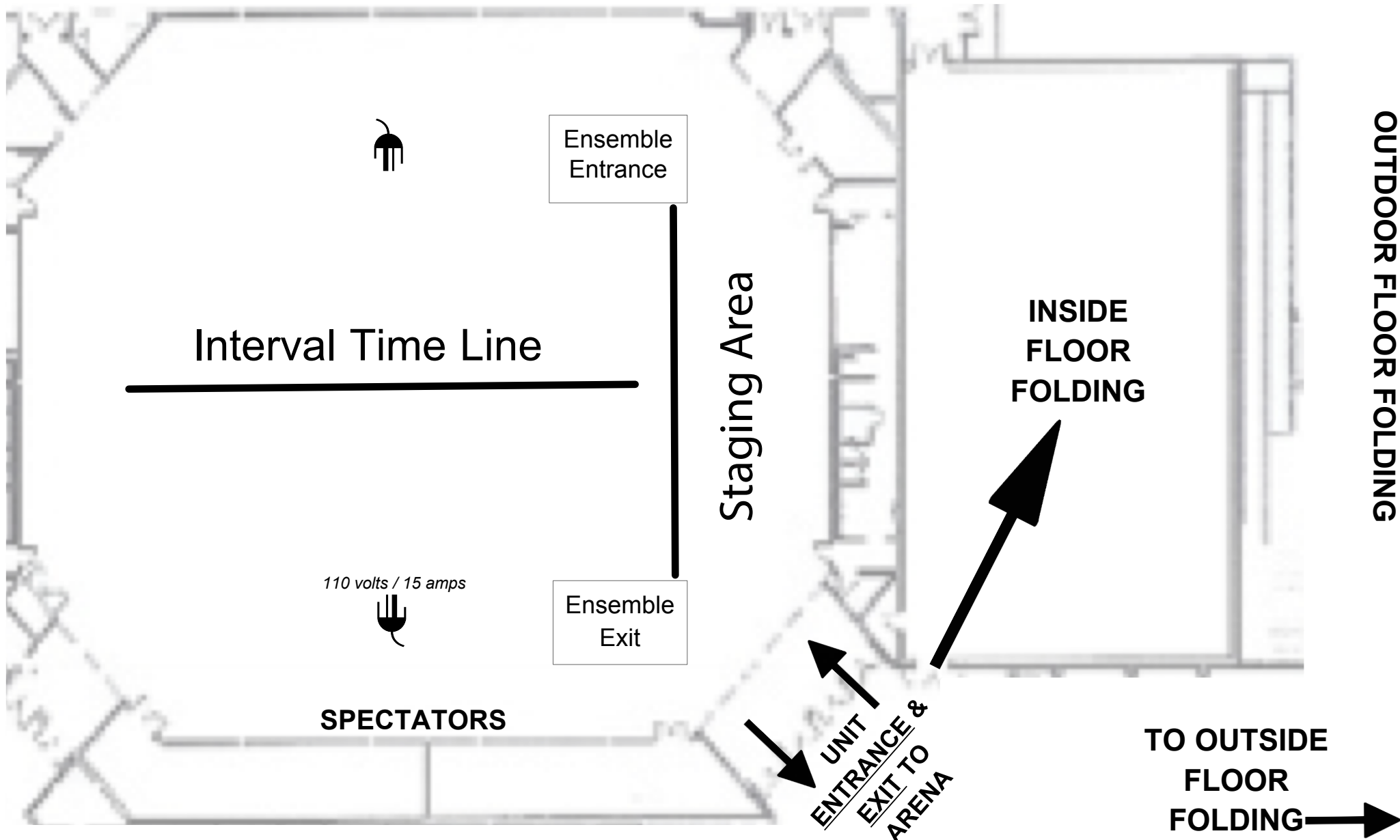
PROP & FLOOR STORAGE

**TO SPECTATOR PARKING**





**UPPER LEVEL VIEW**



**GYM VIEW**



## Atlanta Regional Competition Area Lambert HS, Suwanee, GA

All WGI contest sites must have a minimum of seventy by one hundred feet (70' x 100') to accommodate a "safety zone" of five (5) feet from any spectator seating. If no spectators are seated on the left and right sides, then the safety zone will be eliminated on the left and right sides of the competition area and extend to the wall.

The "competition area" at this event measures 106'x72'. All performing groups must be prepared to perform within that area. Floors (tarps) may not extend into the safety zones per rules found in the WGI Adjudication Manual and Rulebook

