

IMPORTANT HEALTH & SAFETY UPDATES

MASKS RECOMMENDED

WGI PHOENIX PERCUSSION REGIONAL

**EVERYONE IN ATTENDANCE AT THIS REGIONAL IS RECOMMENDED TO
WEAR A MASK.**

Performers may remove their mask while in warm up or while on the performance floor but are recommended to wear their mask at all other times in the building. Everyone else with the group is recommended to wear a mask at all times.

THERE COULD BE DIFFERENT PROTOCOLS AT EACH WGI EVENT, PLEASE READ THROUGH ALL INFORMATION CAREFULLY.

PHOENIX PERCUSSION REGIONAL CONTEST INFORMATION

SATURDAY, MARCH 12, 2022



LOCATION

Verrado High School
20050 W Indian School Road
Buckeye, AZ 85396

EMERGENCY CONTACTS (DAY OF SHOW ONLY)

CONTEST ADMINISTRATOR: BENJA RUSSELL – 404.988.9393 / BENJA@WGI.ORG

EVENT PARTNER: MELLANIE RISCH – 480.254.8740 / MELLANIE.RISCH@WGAZ.ORG

JUDGE PANEL

Effect Music – Bret Cappelluti

Effect Visual – Bobby Jones

Music – Peter Furnari

Visual – Kim Kuhn

T&P – Bryan Scheidecker

COMPETITIONSUITE DETAILS

ACCESSING YOUR GROUP - <https://help.competitionsuite.com/article/16-accessing-your-group>

ADDING YOUR STAFF - <https://help.competitionsuite.com/article/61-adding-staff-members>

ACCESSING COMMENTARY - <https://help.competitionsuite.com/article/17-accessing-commentary>

Score Summary Sheets are also located in your CompetitionSuite account with your overall score.

ADDITIONAL REGIONAL INFO

PRELIMS LOGISTICAL SCHEDULE – [HTTPS://TINYURL.COM/2P8TNKND](https://tinyurl.com/2P8TNKND)

FINALS LOGISTICAL SCHEDULE – [HTTPS://TINYURL.COM/Y5WCXC96](https://tinyurl.com/Y5WCXC96)

CRITIQUE – TWO (2) STAFF MEMBERS PER GROUP ARE ALLOWED IN THE CRITIQUE ROOM. MASKS ARE REQUIRED.

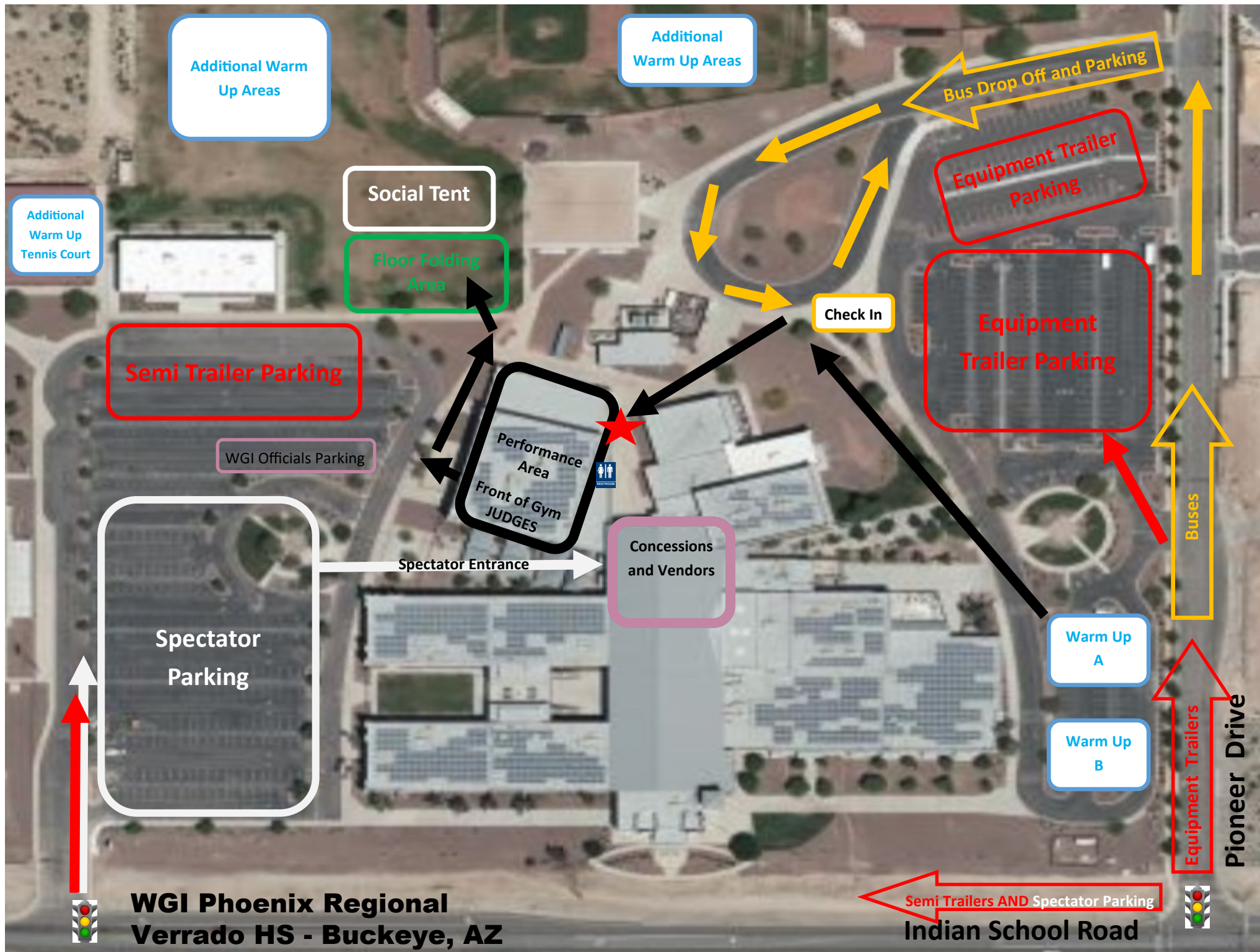
RETREAT – EACH GROUP MAY DESIGNATE ONE INDIVIDUAL TO REPRESENT THE GROUP ON THE FLOOR DURING RETREAT. **MASKS ARE RECOMMENDED.** IF YOUR GROUP IS NOT ATTENDING RETREAT, PLEASE DESIGNATE ONE INDIVIDUAL (PARENT, STAFFER, OR DESIGNATED REPRESENTATIVE) TO STAY AND RETRIEVE YOUR AWARD AT THE CONCLUSION OF RETREAT. PLEASE INFORM THE CONTEST ADMINISTRATOR ON SITE IF YOUR GROUP WILL NOT BE ATTENDING RETREAT.

No unfolded tarps allowed in parking lots. You may use, as long as space allows without violating any fire codes, a practice tarp and it must be labeled “Practice”. Violation of this policy is subject to penalty. This includes using your performance tarp at remote locations. This is in effect at all sites.

REGIONAL REMINDERS - <https://wgi.org/wp-content/uploads/2022/01/2022-Perc-WindsRegionalReminders.pdf>

Winter Guard International, Inc.

1994 Byers Rd, Miamisburg, OH 45342/ Phone: 937-247-5919/ Fax: 937-247-9212/ Email: office@wgi.org Web: <http://wgi.org>



**WGI Phoenix Regional
Verrado HS - Buckeye, AZ**

**Semi Trailers AND Spectator Parking
Indian School Road**

**Equipment Trailers
Pioneer Drive**

WGI Phoenix Regional
Verrado HS
Buckeye, AZ

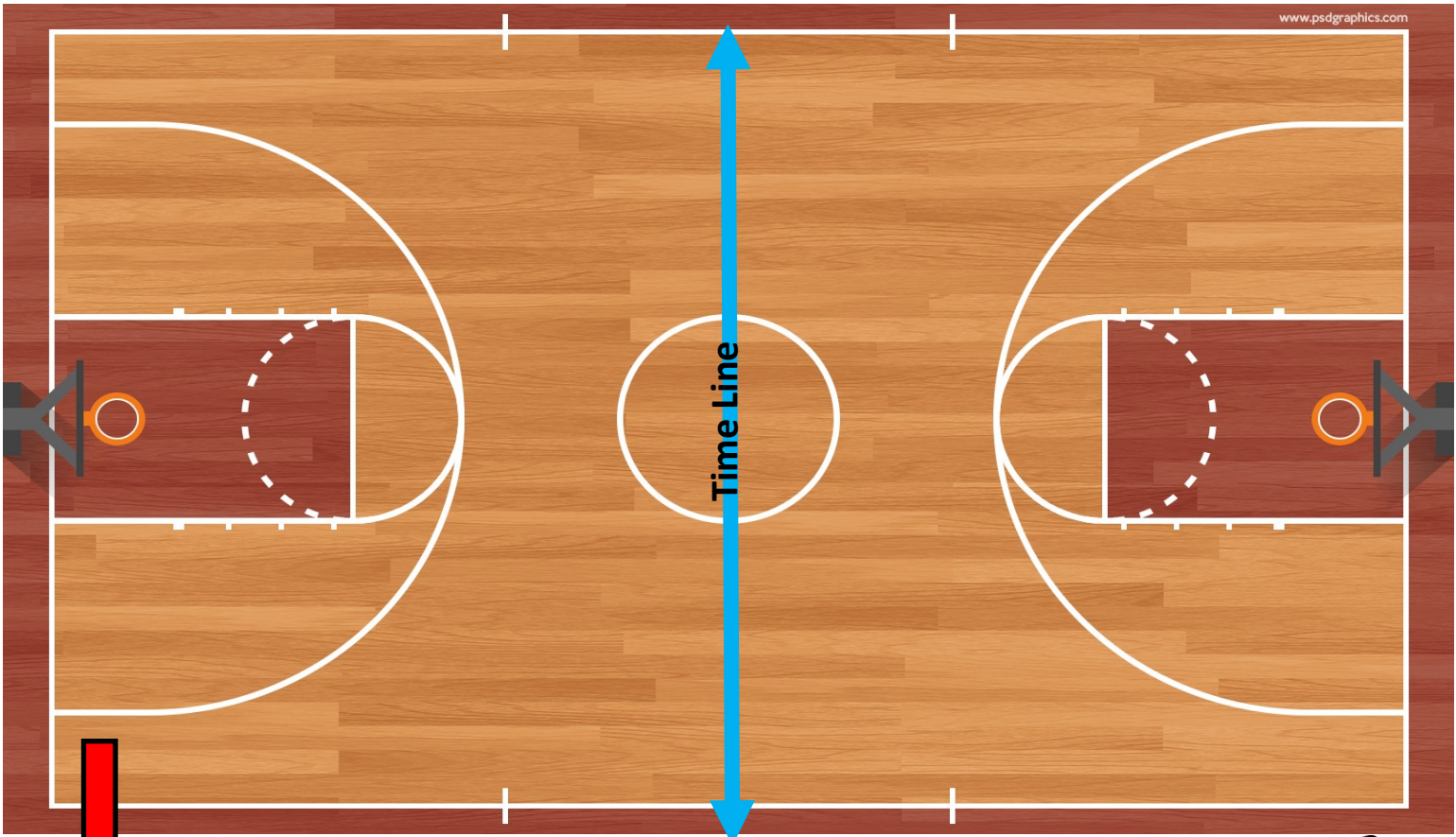
Hallway

Performer
Entrance



Back Bleachers (Performer seating)

Announcer and
Music



Performer
EXIT



Spectator Bleachers



FRONT

Judges



Spectator
Entrance/
Exit



Phoenix Regional Competition Area Verrado HS, Buckeye, AZ

All WGI contest sites must have a minimum of seventy by one hundred feet (70' x 100') to accommodate a "safety zone" of five (5) feet from any spectator seating. If no spectators are seated on the left and right sides, then the safety zone will be eliminated on the left and right sides of the competition area and extend to the wall.

The "competition area" at this event measures 106'x70'. All performing groups must be prepared to perform within that area. Floors (tarps) may not extend into the safety zones per rules found in the WGI Adjudication Manual and Rulebook

