

UPDATED 2/9

AVON COLOR GUARD REGIONAL CONTEST INFORMATION

SATURDAY & SUNDAY, FEBRUARY 11 & 12, 2023



LOCATION

Avon High School
7575 East County Road 150 South
Avon, IN 46123

EMERGENCY CONTACTS (DAY OF SHOW ONLY)

CONTEST ADMINISTRATOR: Jamie Rightmyer / 585-721-8715 / Jamie@wgi.org
EVENT PARTNER: Cathy M. Klemmensen / 317-502-5845 / CMKlemmensen@avon-schools.org

JUDGE PANEL

Panels will be available in this packet when they are completed.

COMPETITIONSUITE DETAILS

ACCESSING YOUR GROUP - <https://help.competitionsuite.com/article/16-accessing-your-group>

ADDING YOUR STAFF - <https://help.competitionsuite.com/article/61-adding-staff-members>

ACCESSING COMMENTARY - <https://help.competitionsuite.com/article/17-accessing-commentary>

MUSIC UPLOADS - <https://help.competitionsuite.com/article/74-uploading-performance-music>

Score Summary Sheets are also located in your CompetitionSuite account with your overall score.

ADDITIONAL REGIONAL INFO

Draft schedules are no longer available. Final schedules are available on the [Avon Regional Event](#) Page.

WARM UP AREAS – Music is permitted in warm up at moderate volumes. Groups who wish to use music in warm up must provide their own sound system.

CRITIQUE – Critique will be available for the national classes at this event. Critique schedules are in this packet. If your group signs up for critique and then does not attend, you may lose the privilege to attend critique again at a future WGI event.

RETREAT – Captains only. If your group is not attending retreat, please designate one individual (parent, staffer, or designated representative) to stay and retrieve your award at the conclusion of retreat. Please inform the Contest Administrator on site if your group will not be attending retreat.

REGIONAL REMINDERS – <https://wgi.org/wp-content/uploads/2022/12/2023CGRegionalReminders.pdf>

updated 2/10



**WGI Avon Color Guard Regional
Judge Panels**

Prelims

	Equipment	Movement	Design Analysis	General Effect	General Effect
SRA	Damon Padilla	Tim Landess	Hieu Nguyen	William Chumley	Dale White
IRA	Damon Padilla	Tim Landess	Hieu Nguyen	William Chumley	Dale White
SA	Damon Padilla	Tim Landess	Hieu Nguyen	William Chumley	Dale White
IA	Doug Henderson	William Chumley	Tom Slaughter	Sam Gervaise	Mike Stone
SO	Doug Henderson	William Chumley	Tom Slaughter	Sam Gervaise	Mike Stone
IO	Tim Landess	Hieu Nguyen	Tom Slaughter	Sam Gervaise	Mike Stone
SW	Doug Henderson	Tim Landess	William Chumley	Damon Padilla	Dale White
IW	Doug Henderson	Tim Landess	William Chumley	Damon Padilla	Dale White

T&P - Tom DiNuoscio
Lead Judge - William Chumley

Finals

	Equipment	Movement	Design Analysis	General Effect	General Effect
All Classes	Sam Gervaise	Hieu Nguyen	Tom Slaughter	Mike Stone	Dale White

T&P - Tom DiNuoscio
Lead Judge - Mike Stone



WGI Avon Regional Critique Schedule

Group	City	State	Class	Critique Time
Orleans Jr-Sr HS	Orleans	IN	Scholastic A	2:10 PM
Reeths-Puffer HS	Muskegon	MI	Scholastic A	2:10 PM
Springboro HS	Springboro	OH	Scholastic A	2:10 PM
Franklin HS (OH)	Franklin	OH	Scholastic A	2:10 PM
Zionsville Community HS	Zionsville	IN	Scholastic A	2:22 PM
Minooka Community HS	Minooka	IL	Scholastic A	2:22 PM
Hamilton Southeastern HS	Fishers	IN	Scholastic A	2:22 PM
Westland HS	Galloway	OH	Scholastic A	2:22 PM
Normal Community Combined Schools	Normal	IL	Scholastic A	2:34 PM
Castle HS	Newburgh	IN	Scholastic A	2:34 PM
Mt. Vernon HS	Fortville	IN	Scholastic A	2:34 PM
Worthington Kilbourne HS	Columbus	OH	Scholastic A	2:34 PM
Middletown HS	Middletown	OH	Scholastic A	2:46 PM
Terre Haute South HS	Terre Haute	IN	Scholastic A	2:46 PM
Carmel HS A	Carmel	IN	Scholastic A	2:46 PM
Carroll HS (IN)	Fort Wayne	IN	Scholastic A	2:46 PM

SA Critique Concludes

2:58 PM

Perpetuum Winter Guard	Naperville	IL	Independent A	8:10 PM
Collage	Akron	OH	Independent A	8:10 PM
Purdue University	West Lafayette	IN	Independent A	8:10 PM
Boundless	Battle Creek	MI	Independent A	8:10 PM
The Magnolia Project	Bowling Green	KY	Independent A	8:22 PM
Huron Valley Winter Guard	Highland	MI	Independent A	8:22 PM
The Union	Southgate	MI	Independent A	8:22 PM
Troy Athens Alias	Troy	MI	Independent A	8:22 PM
Greenwood Community HS	Greenwood	IN	Scholastic Open	8:34 PM
Ben Davis HS	Indianapolis	IN	Scholastic Open	8:34 PM
New Palestine HS	New Palestine	IN	Scholastic Open	8:34 PM
Homestead HS	Fort wayne	IN	Scholastic Open	8:34 PM
Naperville Central HS	Naperville	IL	Scholastic Open	8:46 PM
Northmont HS	Clayton	OH	Scholastic Open	8:46 PM
Bellbrook HS	Bellbrook	OH	Scholastic Open	8:46 PM
Greenfield-Central HS	Greenfield	IN	Scholastic Open	8:46 PM
Decatur Central HS	Indianapolis	IN	Scholastic Open	8:58 PM
Centerville HS	Centerville	OH	Scholastic Open	8:58 PM
Milford HS (OH)	Milford	OH	Scholastic Open	8:58 PM
Franklin Central HS	Indianapolis	IN	Scholastic Open	8:58 PM
SSO	Chicago	IL	Independent Open	9:10 PM
One Light	Danville	IN	Independent Open	9:10 PM
Revival Winter Guard	Indianapolis	IN	Independent Open	9:10 PM
Allegiance	Dundee	IL	Independent Open	9:10 PM
Center Grove HS	Greenwood	IN	Scholastic World	9:22 PM
Carmel HS	Carmel	IN	Scholastic World	9:22 PM
Miamisburg HS	Miamisburg	OH	Scholastic World	9:22 PM
Avon HS	Avon	IN	Scholastic World	9:22 PM
Northview HS	Brazil	IN	Scholastic World	9:34 PM
Lexis	Lexington	KY	Independent World	9:34 PM
Elevate	Indianapolis	IN	Independent World	9:34 PM
Pride of Cincinnati	Cincinnati	OH	Independent World	9:34 PM

Critique Concludes

9:46 PM

Please notify the Contest Administrator if you are unable to attend critique in a timely manner. Failure to do so may result in your color guard forfeiting critique opportunities for the remainder of the season.

Critique is only available for the National Classes (A, Open, World). To be eligible for critique, groups had to sign up on CompetitionSuite ahead of the event.

WGI Avon Color Guard Regional Avon High School

Bus/Truck
Entrance

Color Guard
Check In

Bus/Truck
Parking

Avon High School

Spectator
Entrance

Performance
Gym

Spectator
Parking

Floor/Prop
Unloading

Floor/Prop
Loading

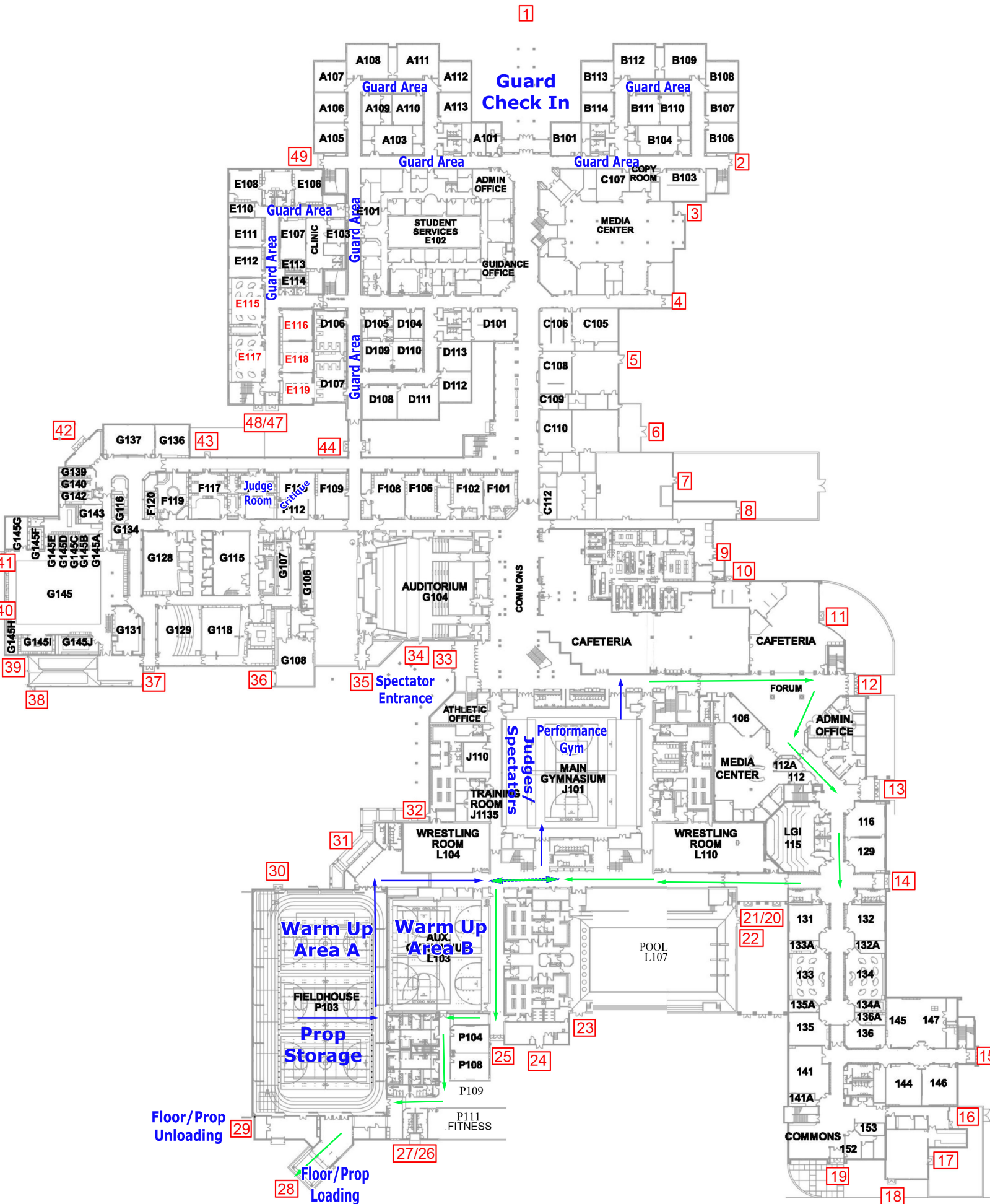
**NO WGI
PARKING**

Maria Ln

To Bus/Truck
Overflow Parking

AVON





WGI Avon Color Guard Regional Avon High School

WGI Avon Color Guard Regional Avon High School Performance Gym



Guard
Exit

75'

106'

Interval Time Line

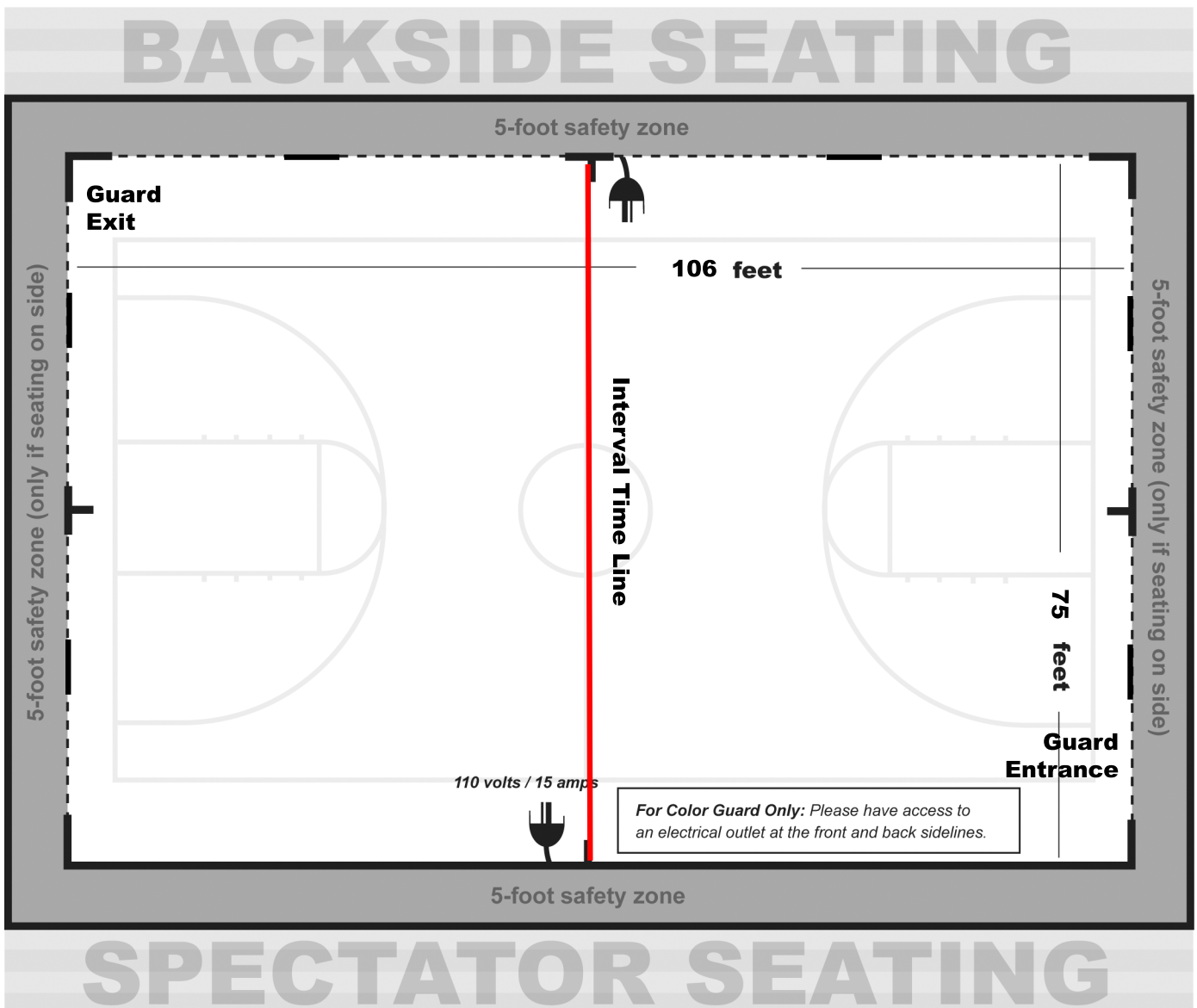
Guard
Entrance



Avon Regional Competition Area Avon High School, Avon, IN

All WGI contest sites must have a minimum of seventy by one hundred feet (70' x 100') to accommodate a "safety zone" of five (5) feet from any spectator seating. If no spectators are seated on the left and right sides, then the safety zone will be eliminated on the left and right sides of the competition area and can extend to a maximum of 106'X 78'.

The "competition area" at this event measures 106'X 75'. All performing groups must be prepared to perform within that area. Floors (tarps) may not extend into the safety zones per rules found in the WGI Adjudication Manual and Rulebook.



7.3.4 Sound Policy (Color Guard)

- Color Guards must have a designated person at the sound table to provide the method for the soundtrack to be played via smartphone, MP3 player, laptop computer, or music uploaded in CompetitionSuite. The designated person is responsible for setting up and playing the device, and it is strongly recommended to have a backup option in the event of a malfunction.
- It is recommended to do a sound check at the designated times provided in the contest information to ensure the playability of any device used by checking the soundtrack at multiple intervals in the music.
- Color Guard must provide their music in a timely manner to the sound operator. Any delay in providing music is the responsibility of the group.
- If there is an issue with the music such as music is too soft, begins in the wrong place or skips, the designated person must make the decision to stop the music and tell the operator to stop the music. If the choice is made to complete the program, the group will not be offered an opportunity to repeat their performance.
- Interval timing will continue as the group resets and begins again. The Contest Administrator has the sole discretion in waiving any timing penalty due to the restart. If the stoppage is due to faulty sound equipment, operator error or other unexplained reason, overtime penalty may be waived.
- Issues related to the equipment provided by the group or error by the designated person (using wrong playlist on MP3, etc.) will result in the actual interval timing being used and penalties, if any, being assessed.
- Volume direction must come from the designated person at the sound table. Direction will not be taken from the audience viewing area or across the floor.
- Final volume discretion is given to the sound operator based on their equipment and the Chief Judge who ultimately determines an appropriate volume level. Sound decibel levels for each performance venue will be measured from the area designated for the General Effect judges.
- The designated representative may provide direction to the sound operator during the performance regarding equalization.
- Under no circumstances will verbal abuse of the sound operator be tolerated. Penalties will be assessed per current WGI rules.



WATCH



LIVE ON

FLOMARCHING



WATCH LIVE ALL SEASON LONG AND RELIVE YOUR FAVORITE MOMENTS WITH SOUND BY CATCHING THE FLOMARCHING REBROADCAST THE FOLLOWING DAY

SUBSCRIBE TODAY AT [FLOMARCHING.COM](https://www.flomarching.com)

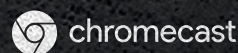
android 

ios 

apple tv 

Roku 

fire tv 

chromecast 

Be There.