

# 2019 Omaha Regional Contest Information

**Facility:** Railmen Performing Arts Center  
2848 College Drive  
Blair, NE 68008

## Emergency Contacts (day of show only)

Kenneth Coultas - 931-231-0486

## Ticket Prices/Info

Prelims—\$13  
Finals—\$15  
Combo—\$20

All major credit cards accepted. Please make checks payable to Railmen Drum Corps.

## General Contest Info

**TO LISTEN TO JUDGES COMMENTARY:** Each director should be set up with an account through CompetitionSuite. This is the **ONLY WAY** to receive judge's commentary for any WGI event. Instructions to do this are available [here](#).

**LOAD/UNLOAD:** Ensembles cannot unload their equipment any earlier than 1 hour before their Warm Up time as shown on the Prelims and Finals schedules.

**WARM-UP AREA:** All maps are in this packet. Ensembles should report according to their warm up time as shown on the prelims logistical schedule.

**PRELIM SCORES:** Posted in the cafeteria.

**CRITIQUE:** Please report at the designated critique time listed at the bottom of the schedule page.

**FINALS SCHEDULE:** The finals schedule will be made available to you after it has been determined.

**VIDEO:** No video cameras will be allowed in any contest venue and no authorized space will be provided for groups to record their performance. Any liability associated with unauthorized recordings will rest with the individual or organization making the recording. WGI does not condone, nor accept any liability for, any unauthorized recording during the event.

**CONCESSIONS:** A full concession stand will be open and available all day, including during the break between prelims and finals.

**PRACTICE SITES:** Ensembles making practice arrangements through the Regional Committee must settle their bill at the Check-In when arriving on Saturday. **Any ensemble with unsettled bills will not be allowed to compete.**

**PLEASE NOTE:** WGI enforces a **NO SMOKING** policy at all WGI Regionals, including practice facilities.

Don't forget to check out the [Regional Reminders!](#)





## Accessing Judge Commentary

**You must have already activated your Competition Suite Account Profile in order for you to be able to listen to WGI judge commentary.**

### **From a Smart phone:**

Download the Commentary app:

- Apple: <https://itunes.apple.com/us/app/competitionsuite-commentary/id594112091?ls=1&mt=8>
- Android: <https://play.google.com/store/apps/details?id=com.competitionsuite.commentary>

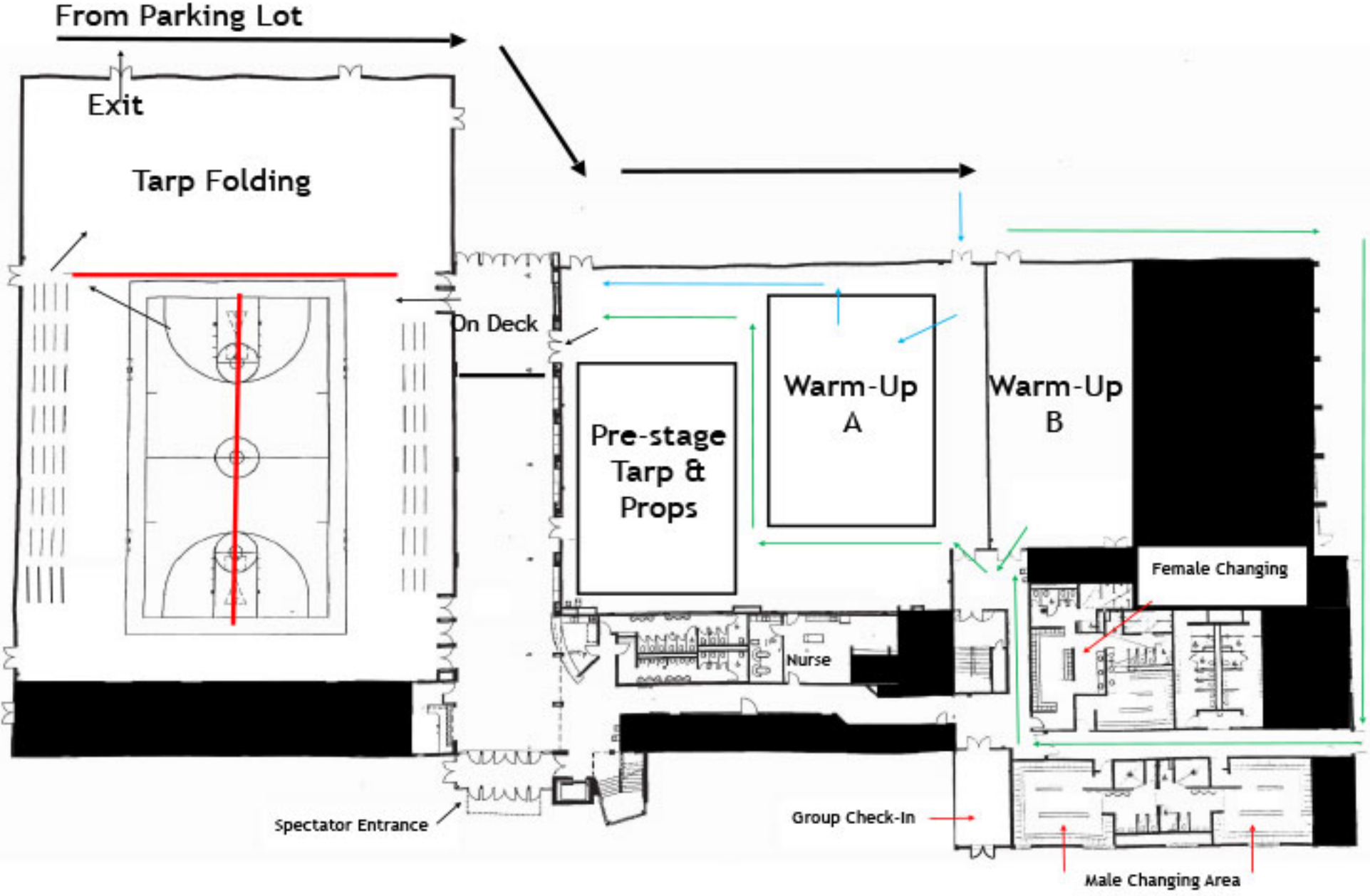
### **From the website:**

1. Visit <http://competitionsuite.com/login/> and log in using the password you set up in your CompetitionSuite profile.
2. Click on "Performances" on the left side of the page under your group's name.
3. Click on the appropriate commentary file you'd like to download or listen to.

### **Support**

If you have questions, feel free to contact support at [help@competitionsuite.com](mailto:help@competitionsuite.com).

# WGI Omaha Regional Railmen Performing Arts Center





## Omaha Regional Competition Area Railmen Performing Arts Center, Blair, NE

All WGI contest sites must have a minimum of seventy by one hundred feet (70' x 100') to accommodate a "safety zone" of five (5) feet from any spectator seating. If no spectators are seated on the left and right sides, then the safety zone will be eliminated on the left and right sides of the competition area and extend to the wall.

The "competition area" at this event measures 72'X106'. All performing groups must be prepared to perform within that area. Floors (tarps) may not extend into the safety zones per rules found in the WGI Adjudication Manual and Rulebook

