



Dallas Color Guard Regional

Site:

Lake Ridge High School
101 N Day Miar Road
Mansfield, TX 76063

Dimensions: 106' x 68'

Front Side Bleacher Rows: 13

Seating Capacity: appx 1200

Approximate Ceiling Height: appx 40 ft

There are no stairs to contend with in the competition area.

There are no permanent structures above the competition floor.

Color guards do not enter the competition area directly from the outdoors.

There is electrical power available at the front and back sideline.

Color guards do not exit the competition area directly to the outdoors.

Large commons area and cafeteria will be utilized for prop storage prior to the competition.

There will be a black vinyl tarp measuring 60x90 covering the wooden gym floor.

In case of inclement weather, an indoor area to refold floors may be made available.

The distance from body warm up to equipment warm up is approximately 1 minute.

The distance from equipment warm up to the performance gym is approximately 1 minute.

There are separate areas for body and equipment.

Body Warm Up

Dance Room

Dimensions: appx: 48ft. X 37ft.

There are no obstructions in the area.

Music may be used at moderate levels to be determined by the contest administrator.

Body Warm Up

Auxiliary Gym

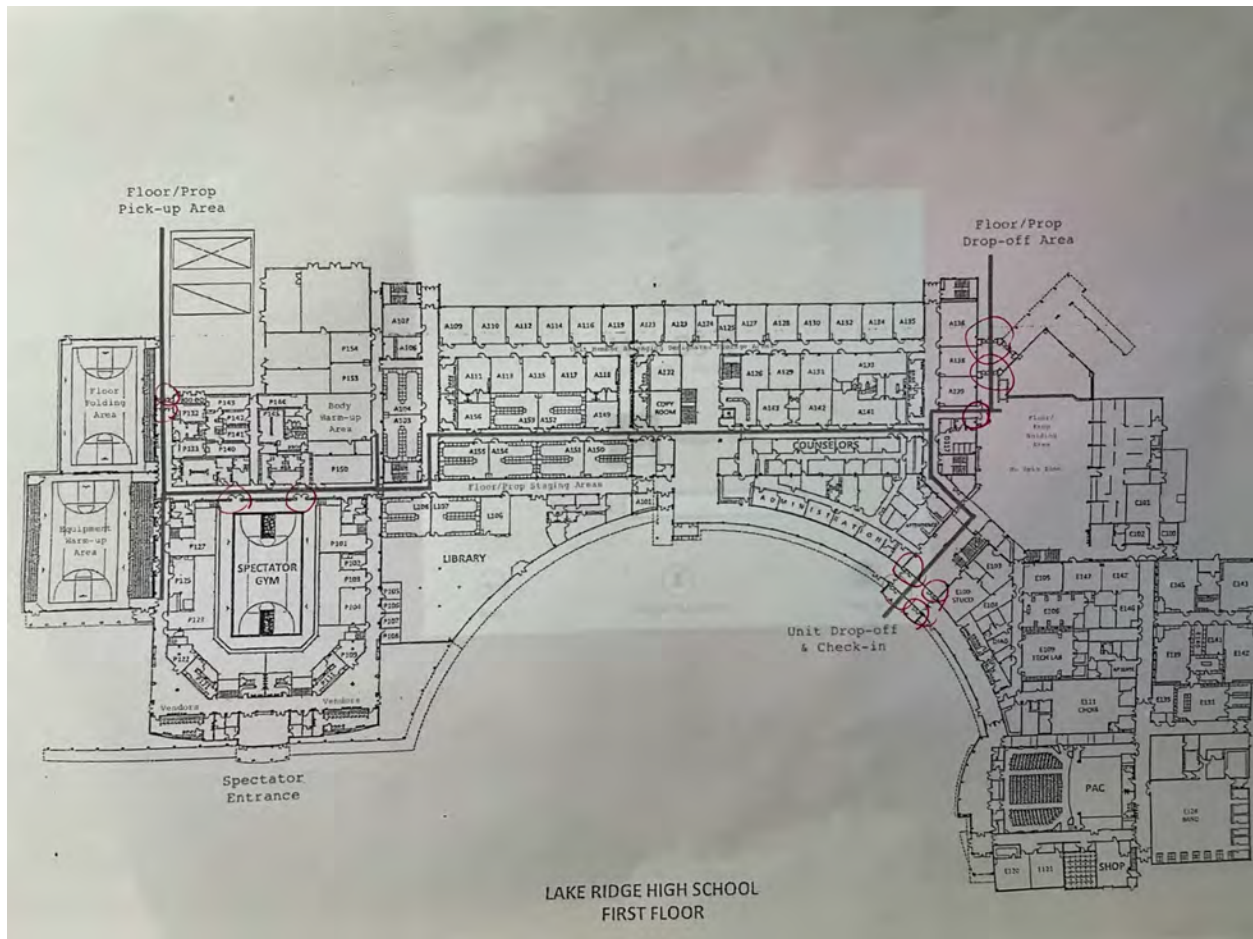
Dimensions: appx: 105ft. X 70ft.

Appx Ceiling Height: 40ft.

There are no obstructions in the area.

Music may be used at moderate levels to be determined by the contest administrator.

The above information is being provided to you in order give you the most complete information we currently have on this contest. All information is subject to change either before or during the event by contest personnel based on need.



Lake Ridge High School Site Map

The above information is being provided to you in order give you the most complete information we currently have on this contest. All information is subject to change either before or during the event by contest personnel based on need.



Prop Entry coming from the outside to Prop Storage H: 81.5' W: 62.5'

The above information is being provided to you in order give you the most complete information we currently have on this contest. All information is subject to change either before or during the event by contest personnel based on need.



2nd entry door from outside leading from photo 1 to Prop Storage H: 81.5' W: 60'

The above information is being provided to you in order give you the most complete information we currently have on this contest. All information is subject to change either before or during the event by contest personnel based on need.



Prop Storage to Hallway 1 (going to performance gym) H: 81.5' W: 95'

The above information is being provided to you in order give you the most complete information we currently have on this contest. All information is subject to change either before or during the event by contest personnel based on need.



Hallway to Performance Gym H: 81.5' W: 87'

The above information is being provided to you in order give you the most complete information we currently have on this contest. All information is subject to change either before or during the event by contest personnel based on need.



Hall to Performance Gym H: 81.5' W: 87'

The above information is being provided to you in order give you the most complete information we currently have on this contest. All information is subject to change either before or during the event by contest personnel based on need.



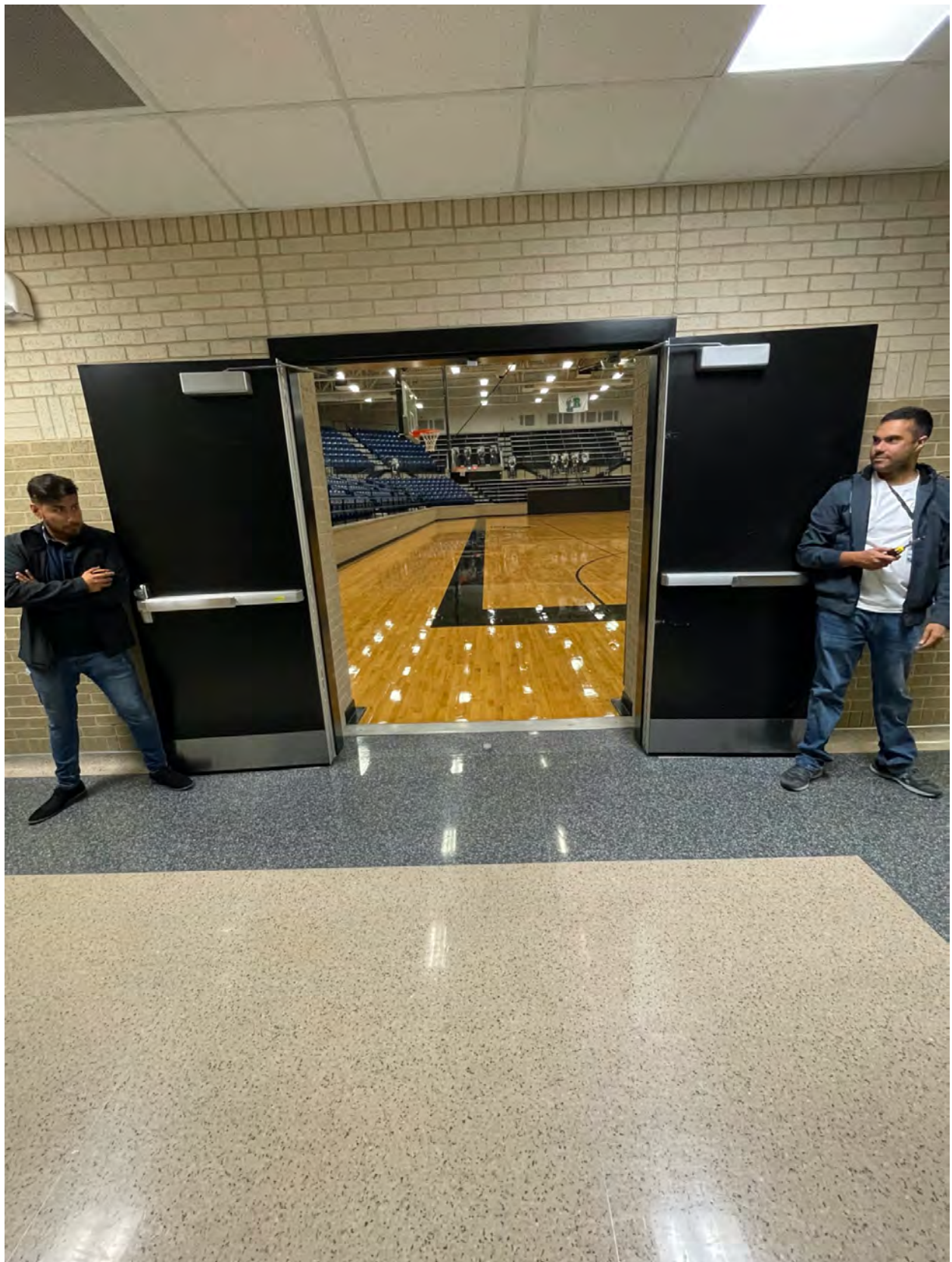
Hall to Performance Gym H: 81.5' W: 89'

The above information is being provided to you in order give you the most complete information we currently have on this contest. All information is subject to change either before or during the event by contest personnel based on need.



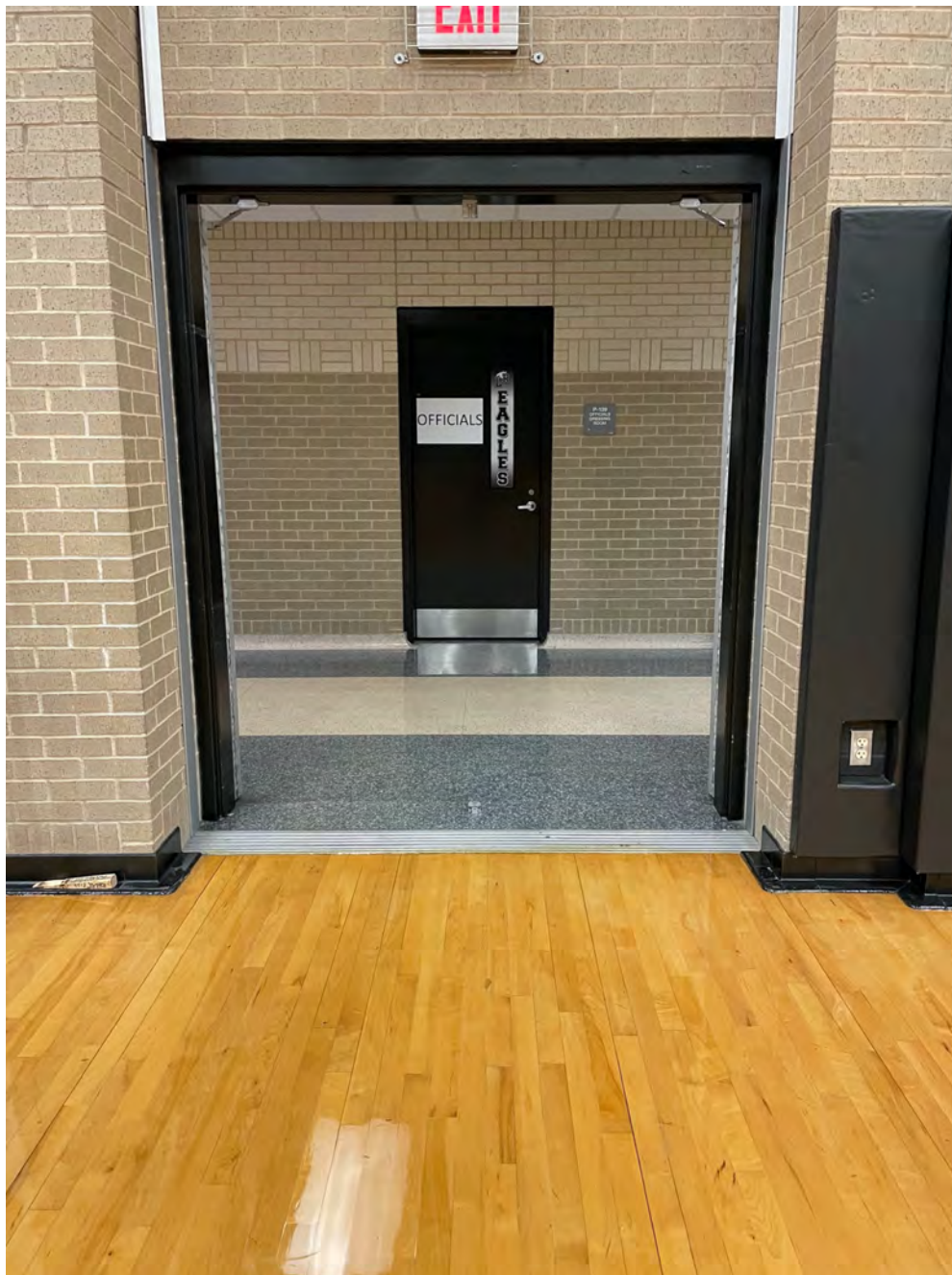
Hall to Performance Gym H: 81.5' W: 67.5'

The above information is being provided to you in order give you the most complete information we currently have on this contest. All information is subject to change either before or during the event by contest personnel based on need.



Performer Entry Door H: 80' W: 71'

The above information is being provided to you in order give you the most complete information we currently have on this contest. All information is subject to change either before or during the event by contest personnel based on need.



Performer Gym Exit H: 80' W: 71'

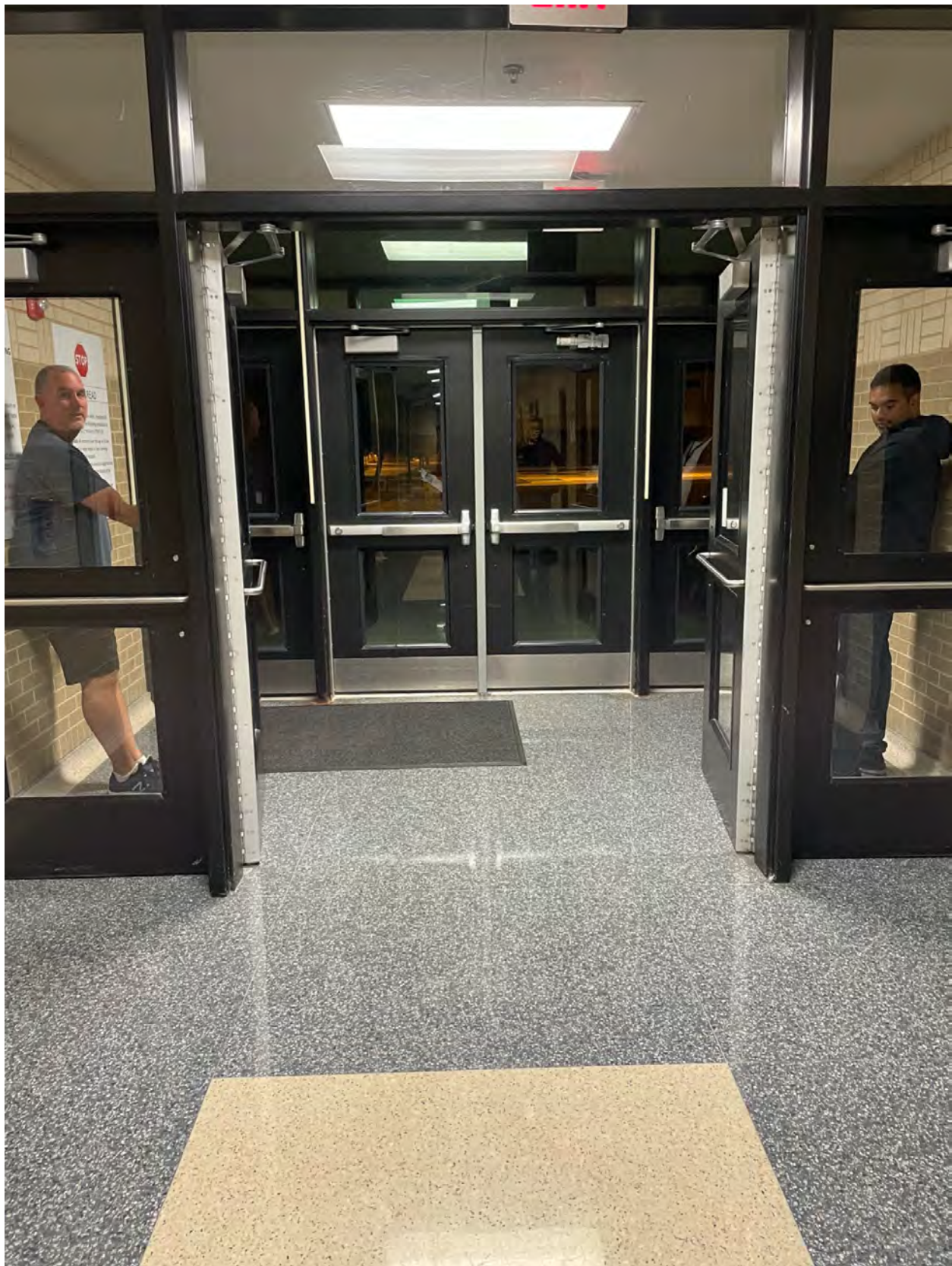
The above information is being provided to you in order give you the most complete information we currently have on this contest. All information is subject to change either before or during the event by contest personnel based on need.



The above information is being provided to you in order give you the most complete information we currently have on this contest. All information is subject to change either before or during the event by contest personnel based on need.



The above information is being provided to you in order give you the most complete information we currently have on this contest. All information is subject to change either before or during the event by contest personnel based on need.



Prop Exit to outside of the building 1st door H: 83' W: 63'

The above information is being provided to you in order give you the most complete information we currently have on this contest. All information is subject to change either before or during the event by contest personnel based on need.



Prop Exit to outside of the building 2nd door H: 80.5' W: 63

The above information is being provided to you in order give you the most complete information we currently have on this contest. All information is subject to change either before or during the event by contest personnel based on need.