

2019 Chicago Regional Contest Information

Saturday, February 23
Prelims Begin 9 AM
Finals Begin 6:10 PM

Facility: Naperville North High School
889 North Mill Street
Naperville, IL 60563

Emergency Contacts (day of show only)

Tom Hachmeister—708-220-5192
Anne Turner—630-779-8326

Ticket Prices/Info

Prelims—\$10
Finals—\$15
Combo—\$20

Cash Only

Please contact the show sponsor ticket contact PRI-
OR to the show if you have any questions or have a
special circumstance.

Regional Contact Info

Contest Administrator—Tom Hachmeister
708-220-5192
tomh@wgi.org

General Info—Anne Turner
630-779-8326
aturner@naperville203.org

Practice Info—Nick Toland
630-492-6431
nicktoland06@gmail.com

Judges

Panels are available in this packet.

General Contest Info

TO LISTEN TO JUDGES COMMENTARY: Each director should be set up with an account through CompetitionSuite. This is the only way to receive judge's commentary for any WGI event. Instructions to do this are available [here](#).

SOUND CHECK: One hour prior to the start of the contest and during breaks at the discretion of the Contest Administrator. If you choose to use the new music upload feature available in CompetitionSuite, WGI suggests you still do a sound test. Information regarding music uploads is available in the Regional Reminders.

WARM-UP AREA: All maps are located in this packet. Color guards should report one hour prior to performance time. Due to the shared warm up space, music is not allowed as it will disturb the other group in the area.

PRELIM SCORES: Posted in the cafeteria.

GROUP SUMMARY SHEETS: Available on CompetitionSuite.

FINALS SCHEDULE: The finals schedule will be available on WGI.org after it has been determined. The SA class is in ROUNDS for this regional.

FINALSIST: All open and world class color guards must make qualifying score to progress to finals. Qualifying scores are listed in the regional reminders.

VIDEOS: No video cameras will be allowed in any contest venue and no authorized space will be provided for groups to record their performance. Any liability associated with unauthorized recordings will rest with the individual or organization making the recording. WGI does not condone, nor accept any liability for, any unauthorized recording during the event.

PRACTICE SITES: Color guards making practice arrangements through the regional committee must settle their invoice at color guard check in upon arriving on Saturday.

PLEASE NOTE: WGI enforces a **NO SMOKING** policy at all WGI Regionals, including practice facilities.

Don't forget to review the [Regional Reminders!](#)



Winter Guard International

2405 Crosspointe Drive, Dayton, OH 45342 Phone: 937-247-5919 Fax: 937-247-9212 Email: office@wgi.org <http://www.wgi.org>



Chicago Color Guard Regional Panels

Prelims

	Equipment	Movement	Design Analysis	General Effect	
SRA	Jackie Campbell	Erin Brown	Mike Stone	Meghan McCourt	George Oliviero
IRA	Jackie Campbell	Erin Brown	Mike Stone	Meghan McCourt	George Oliviero
SA	Tim Landess	Erin Brown	Mike Stone	Beverly Brahan	Meghan McCourt
IA	Jackie Campbell	Erin Brown	George Oliviero	Beverly Brahan	Meghan McCourt
SO	Tim Landess	Jackie Campbell	George Oliviero	Beverly Brahan	Mike Stone
IO	Tim Landess	Jackie Campbell	George Oliviero	Beverly Brahan	Mike Stone
SW	Tim Landess	Jackie Campbell	George Oliviero	Beverly Brahan	Mike Stone

T&P Dan Middlesworth

Lead Judge Beverly Brahan

Finals

	Equipment	Movement	Design Analysis	General Effect	
SRA	Tim Landess	Erin Brown	Mike Stone	Beverly Brahan	George Oliviero
IRA	Tim Landess	Erin Brown	Mike Stone	Beverly Brahan	George Oliviero
SA	Jackie Campbell	Meghan McCourt	George Oliviero	Beverly Brahan	Mike Stone
IA	Tim Landess	Erin Brown	George Oliviero	Beverly Brahan	Meghan McCourt
SO	Jackie Campbell	Erin Brown	George Oliviero	Beverly Brahan	Meghan McCourt
IO	Jackie Campbell	Erin Brown	George Oliviero	Meghan McCourt	Mike Stone
SW	Jackie Campbell	Beverly Brahan	George Oliviero	Meghan McCourt	Mike Stone

T&P Dan Middlesworth

Lead Judge Beverly Brahan



Accessing Judge Commentary

You must have already activated your Competition Suite Account Profile in order for you to be able to listen to WGI judge commentary.

From a Smart phone:

Download the Commentary app:

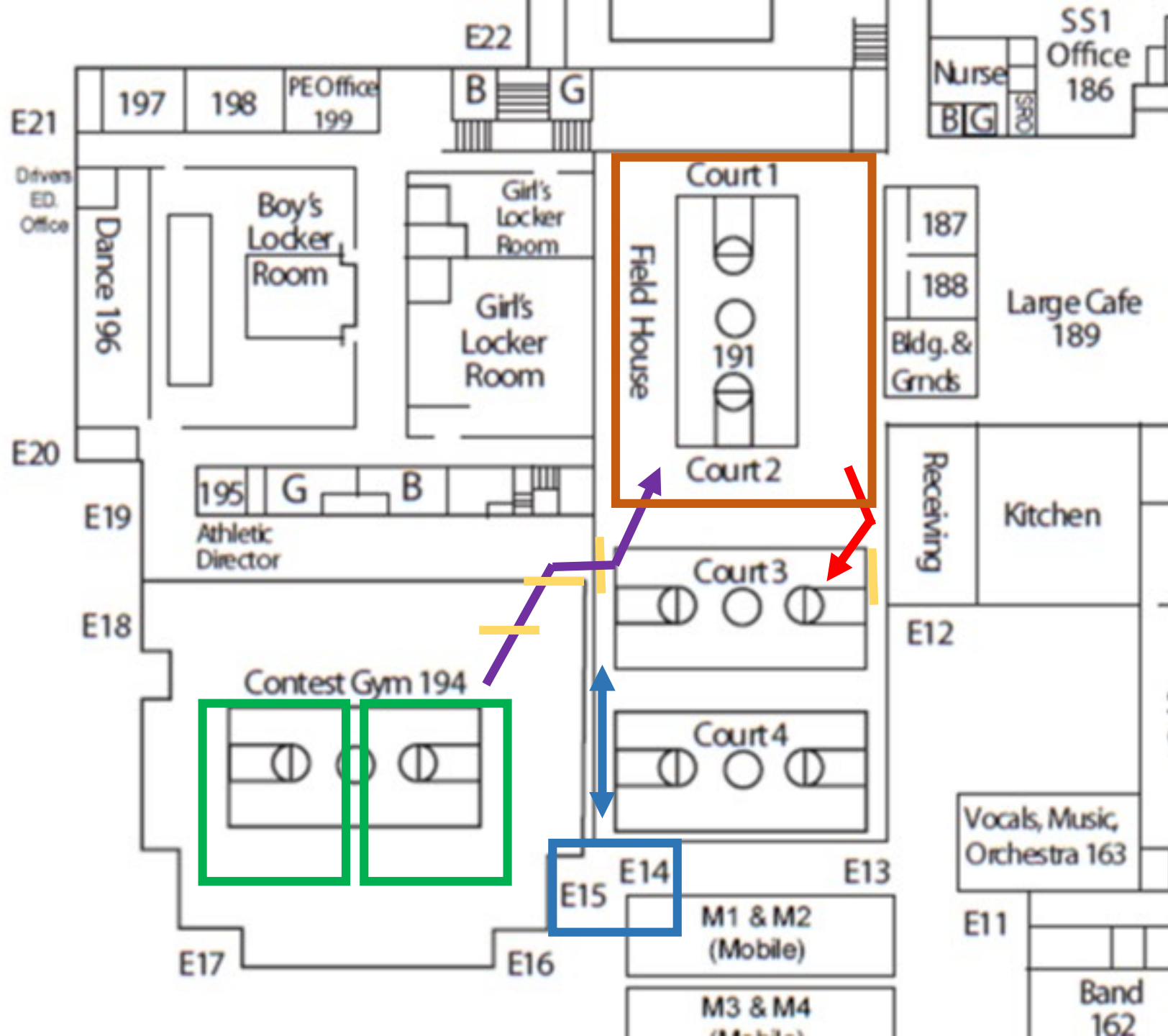
- Apple: <https://itunes.apple.com/us/app/competitionsuite-commentary/id594112091?ls=1&mt=8>
- Android: <https://play.google.com/store/apps/details?id=com.competitionsuite.commentary>

From the website:

1. Visit <http://competitionsuite.com/login/> and log in using the password you set up in your CompetitionSuite profile.
2. Click on "Performances" on the left side of the page under your group's name.
3. Click on the appropriate commentary file you'd like to download or listen to.

Support

If you have questions, feel free to contact support at help@competitionsuite.com.



Props enter and exit E15 (or E14 if oversized), and prop storage will be on perimeter of Warm Up A or B space in Contest Gym

Contest Gym = Warmup Areas (A & B with divided curtain)

Guard Entrance Route

Field House Courts 1&2 = Performance Gym

Guard Exit

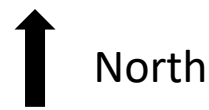
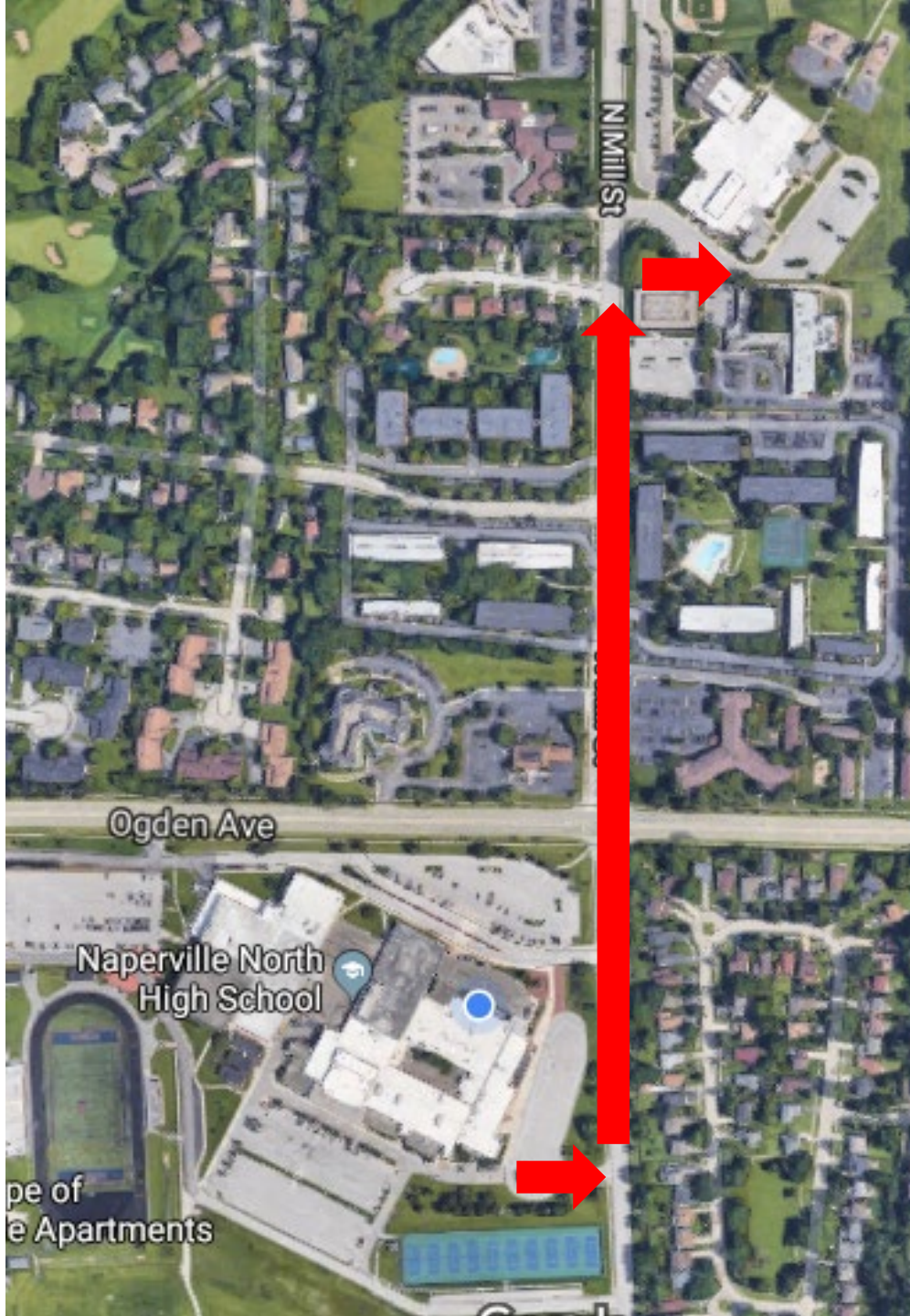
Court 3 = Tarp Refold

Doorways (double standard) for transitioning



Add'l parking info for guards & spectators....

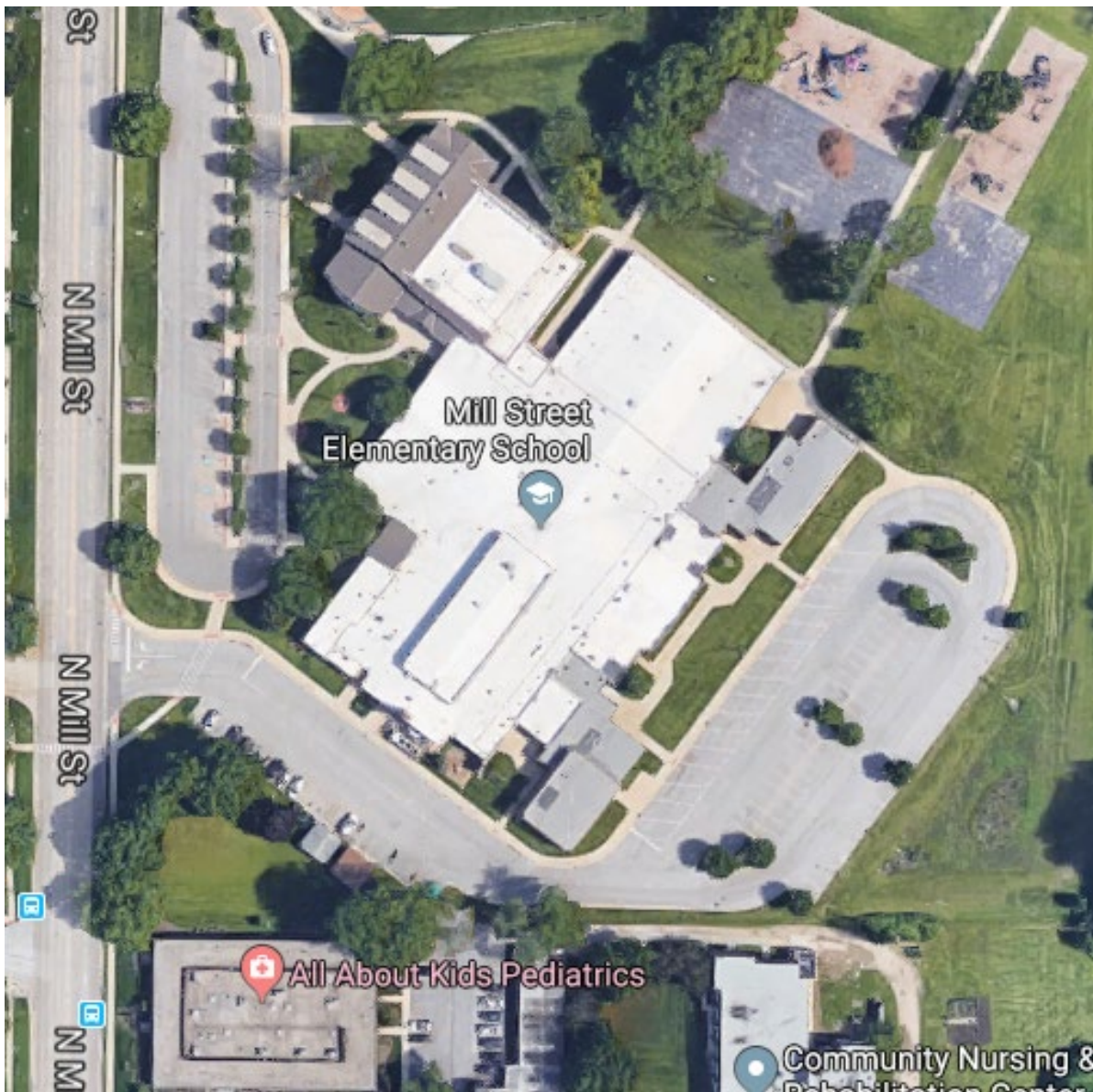
- Entrance on the north side of the school from Ogden Ave is only accessible via eastbound Ogden.
- Entrance for guard buses and trucks on the southeast side of the school from Mill St is accessible via both northbound and southbound Mill St.
- The entrance on the southeast side of the school continues and wraps all the way around the school and exits at the northeast side of the school. Only the east lot for buses and trucks is completely contained. All other parking areas are connected.



North

Teams performing between 8:45am and 11:30am:

Please relocate team busses and prop trucks to the south parking lot of Mill St Elementary School after reloading your props to allow for parking space for teams following yours. If your team does not make finals but plan to stay in the area, please park busses at Mill St Elementary School during finals performance times.



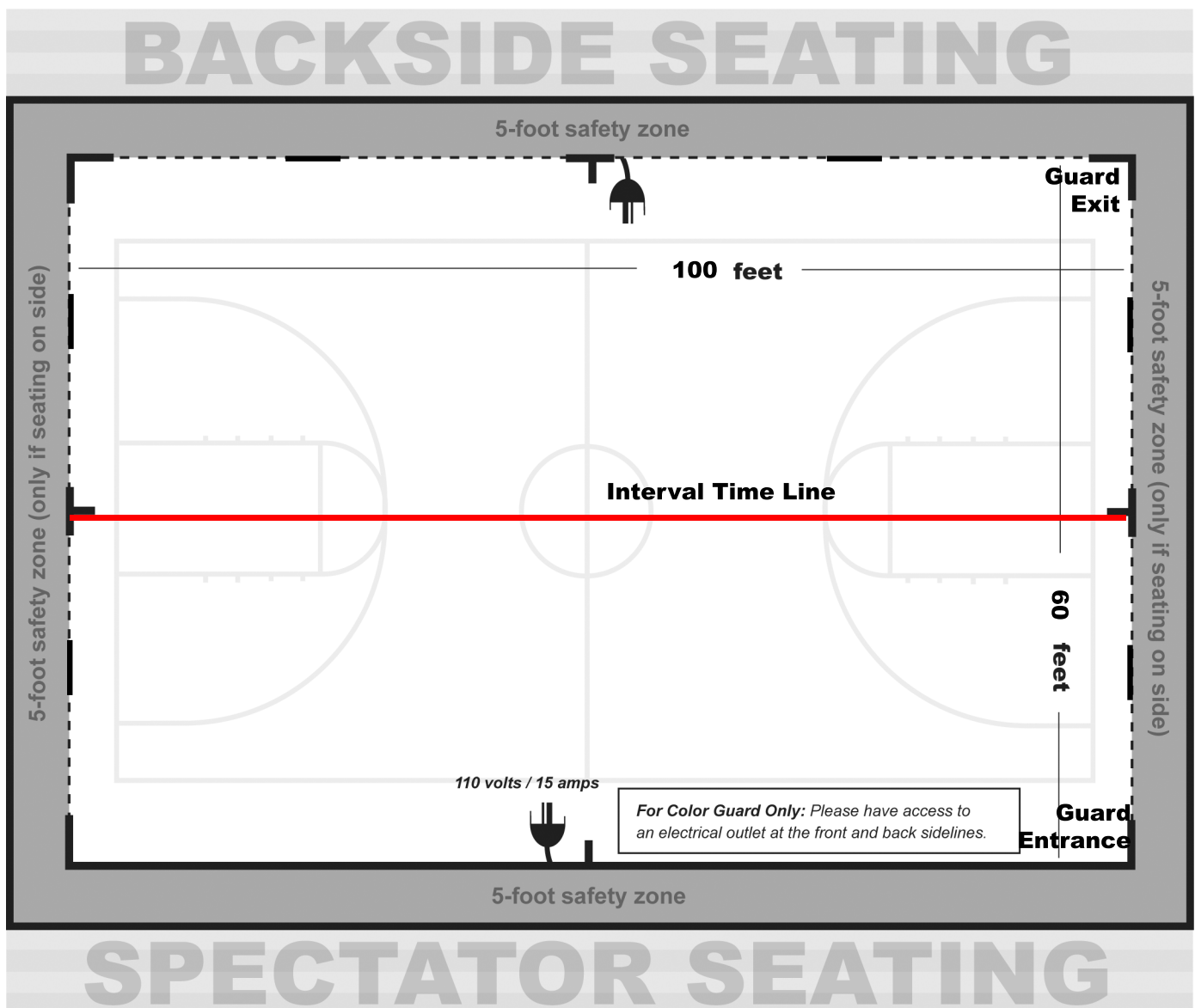
- Please use the south driveway to enter the back (southwest and southeast) parking lot of Mill St Elementary School. Please do NOT park in the main front parking lot.



Chicago Regional Competition Area Naperville North HS, Naperville, IL

All WGI contest sites must have a minimum of seventy by one hundred feet (70' x 100') to accommodate a "safety zone" of five (5) feet from any spectator seating. If no spectators are seated on the left and right sides, then the safety zone will be eliminated on the left and right sides of the competition area and can extend to a maximum of 106'X 78'.

The "competition area" at this event measures 100'X 60'. All performing groups must be prepared to perform within that area. Floors (tarps) may not extend into the safety zones per rules found in the WGI Adjudication Manual and Rulebook.



From the 2019 WGI Policy Manual

4.120 Sound Policy (Color Guard)

- All color guards should do a sound check at the designated times provided in the contest information packet to ensure the playability of any device or CD. Color guards should check the soundtrack at multiple places in the music to verify playability of any device
- Color guards should still do a sound check if they are using the WGI Music Upload in CompetitionSuite to ensure everything is correct.
- Color guard is responsible for providing the method that the music will be played, e.g. CD, MP3, computer, etc. Each color guard should have two methods to play their soundtrack in the event one does not work.
- Color guard must provide their music in a timely manner to the designated sound operator. Any delay in providing music is the responsibility of the color guard.
- Color guards using the Music Upload process through CompetitionSuite should have a backup using another device type such as an MP3 player, iPhone, or CD.
- Color guard must have a designated person at the sound table to operate any device provided to play music such as MP3 players or computers. Guard's representative is responsible to set up and play device. If a CD is provided, the color guard representative must instruct the sound operator as to what track or other relevant information is needed to start the music when directed by the contest Timing and Penalty judge or after the color guard's introduction.
- If the color guard has an issue with the music such as music is too soft, it begins in the wrong place or skips, the color guard's representative must make the decision to stop the music and tell the operator to stop the music. If the color guard representative chooses not to stop and the color guard completes their performance, the color guard will not be offered an opportunity to perform again.
- Interval timing will continue as the color guard resets and begins again. The Contest Administrator has the sole discretion in waiving any timing penalty due to the restart. If the stoppage is due to faulty sound equipment, operator error or an unexplained reason, overtime penalty may be waived.
- Issues related to the equipment provided by the color guard, quality of the CD or the color guard's representative error (using wrong playlist on MP3, etc.) will result in the actual interval timing being used and penalties, if any, being assessed.
- Volume direction must come from the color guard representative at the sound table. Direction will not be taken from the audience viewing area or across the floor. Final volume discretion is given to the sound operator based on their equipment and the Chief Judge who ultimately determines an appropriate volume level.
- The color guard representative may provide direction to the sound operator during the performance regarding equalization.
- It is the responsibility of the color guard to provide their music for each performance and to ensure that their soundtrack is working appropriately. CDs may not be left at sound table between performances.
- Under no circumstances will verbal abuse of the sound operator be tolerated. Penalties will be assessed per current WGI rules