



**Percussion World Championships**  
**Hobart Arena Site Information**  
**255 Adams St**  
**Troy, OH 45373**

**Parking / Vehicles**

- Parking for groups and spectators is abundant. There is no cost for spectator parking. Spectator parking is located across the street from Hobart Arena. There will be police to assist with crossing the street.
- Each performing group will be allotted four (4) parking passes. Buses and trucks do not need a parking pass.
- Performing groups' trucks and buses should arrive no earlier than the "Parking Lot Check-In Time" listed on the logistical schedule.
- Buses and personal group vehicles with performers will drop off near truck parking. Buses must move to Duke Park. Personal group vehicles may park in Spectator parking. Buses should not return for reloading until the group is ready to depart. There is no shuttle from Duke Park to Hobart Arena – please plan accordingly.
- Trucks must be moved out of the designated unloading/loading area 60 minutes after the group's performance concludes. There is remote parking available at Duke Park (*please see attached map*). There is no shuttle from Duke Park to Hobart Arena – please plan accordingly.

**Dressing Facilities, Restrooms, & First Aid**

- Dressing facilities are very limited. Please arrive at the arena in competitive attire.
- Restrooms are available inside the arena.
- First Aid is available inside the arena.

**General Group Logistics**

- Warm-ups will be conducted in the Alpha Warm-Up Lot. There are two tents (A/B) outside of the loading dock that may be utilized. Please see the logistical schedule for your group's tent times. Please have a plan and supplies ready in the event that you will need to unload, load, and/or transition in the rain.
- Groups are not permitted to run power from any building power access. Please plan to use generators should you want power in unloading, warm up, and/or loading. Generators are NOT permitted inside the building.
- Please report to the loading dock no earlier than your "Arrive at Loading Dock" time listed on the logistical schedule.
- Anyone who is entering the arena with a performing group must have a valid badge or wristband. If there is a person entering with a performing group who has a valid spectator ticket, they must have

their ticket scanned and the appropriate wristband on prior to entering the arena. Failure to secure a wristband prior to entering the arena will prohibit their entrance to the arena with the performing group.

### **Competition Area**

- The competition area floor is concrete and covered with black tarp.
- A floor to ceiling black drape will adorn the back wall of the arena covering the entrances and exits.
- The competition area is 72' x 106'. Please see the competition area layout for more details.
- WGI will provide two 20 amp dedicated circuits on the front and back sidelines for performing groups.

### **Hobart Entry Procedures**

- No equipment will be allowed in the main spectator arena entrances. Equipment may only enter the building through the designated performance entrance at the loading dock. **Flag bags, equipment bags, and cymbal bags are not permitted through the spectator entrance.**
- **All persons** will walk through a **metal detector** or be screened with a **hand-held metal detector**, to search for prohibited items any time they enter or re-enter the building. Please allow extra time to your arrival to the arena to account for this process.
- All bags are subject to search. We ask you to please limit the number of bags/purses/small backpacks being brought into the arena. Personal bags may be allowed after a thorough inspection. **Bags larger than 16" x 16" x 8" are not permitted** except for diaper bags and medical equipment which are subject to inspection at any time.
- **Prohibited Items:** Including, but not limited to, firearms, weapons of any kind, illegal substances, hazardous materials, outside food and drink, strollers, signs larger than 8.5" x 11", tripods, balloons, animals (with the exception of service animals), camera lenses longer than eight (8) inches, laser points, and noisemakers.

### **Safety and Weather Communications**

- In the event of inclement weather and/or other safety concerns, information will be sent to the groups from WGI via CompetitionSuite. Please be prepared to disseminate the information to your group, staff, volunteers, etc.
- Tents are **not** suitable for sheltering in the event of inclement weather.

# 2025 PERCUSSION AND WINDS WORLD CHAMPIONSHIPS

The following known frequencies will be in use at the World Championships sites:

### UD Arena

471.15	648.4	5.7 - 5.9 GHz	451.375
475.375	558.3	1.9 GHz	461.225
487.925	650.2	2.4 & 5GHz	469.925
503.125	650.7	464.75	461.4375
515.9	652.5	464.925	464.05
524.55	655	464.5875	
527.5	681.1	464.9875	
640	701.7	464.75	
643.5	682.3	469.75	
644.7	860.1	451.925	

### Nutter Center

451 Mhz – 465 Mhz

596 Mhz – 607 Mhz

626 Mhz – 668 Mhz

### Truist Arena

451 Mhz – 465 Mhz

626 Mhz – 668 Mhz

### Hobart Arena

451 Mhz – 465 Mhz

800 Mhz

# Percussion World Championships

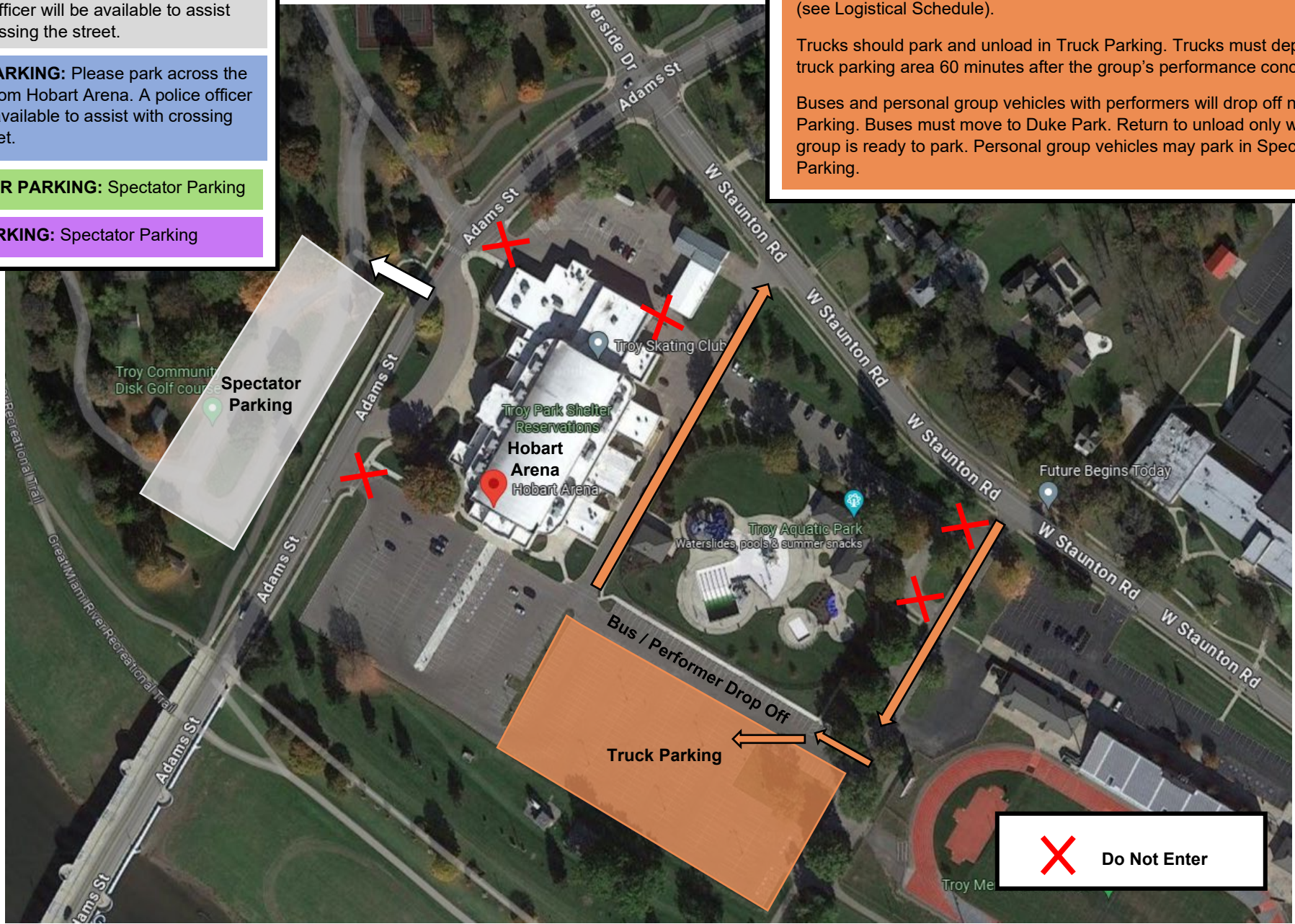
## Hobart Arena

### Group Parking Map



- SPECTATOR PARKING:** Please park across the street from Hobart Arena. A police officer will be available to assist with crossing the street.
- ADA PARKING:** Please park across the street from Hobart Arena. A police officer will be available to assist with crossing the street.
- VENDOR PARKING:** Spectator Parking
- VIP PARKING:** Spectator Parking

**PERFORMING GROUPS:**  
Performing groups' trucks, buses, and personal group vehicles with performers should arrive at Truck Parking at "Parking Lot Check-In" time (see Logistical Schedule).  
  
Trucks should park and unload in Truck Parking. Trucks must depart the truck parking area 60 minutes after the group's performance concludes.  
  
Buses and personal group vehicles with performers will drop off near Truck Parking. Buses must move to Duke Park. Return to unload only when the group is ready to park. Personal group vehicles may park in Spectator Parking.

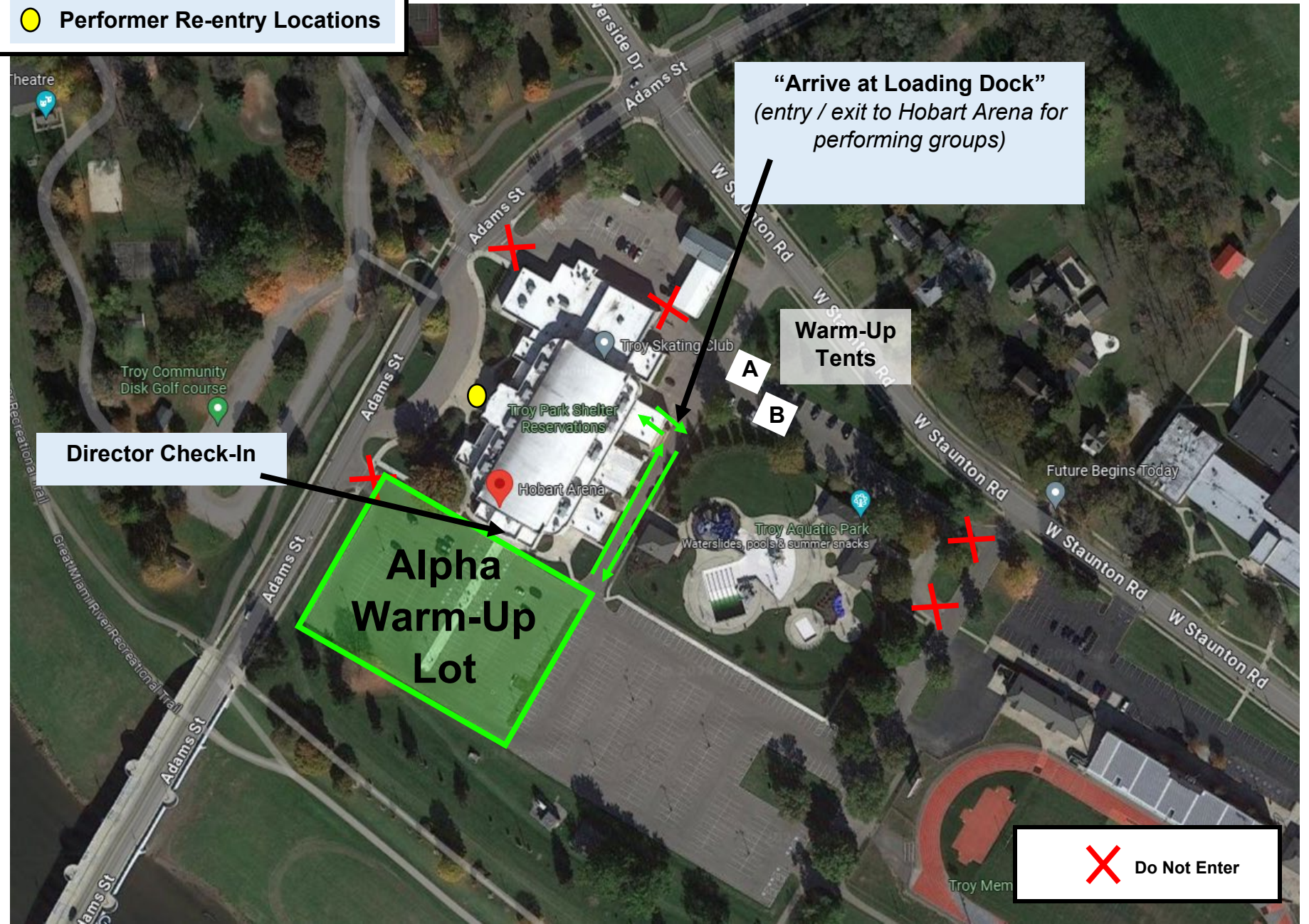


**X Do Not Enter**

**Percussion World Championships**  
**Hobart Arena**  
**Group Flow Map**



**● Performer Re-entry Locations**



**“Arrive at Loading Dock”**  
*(entry / exit to Hobart Arena for performing groups)*

**Warm-Up Tents**  
A  
B

**Director Check-In**

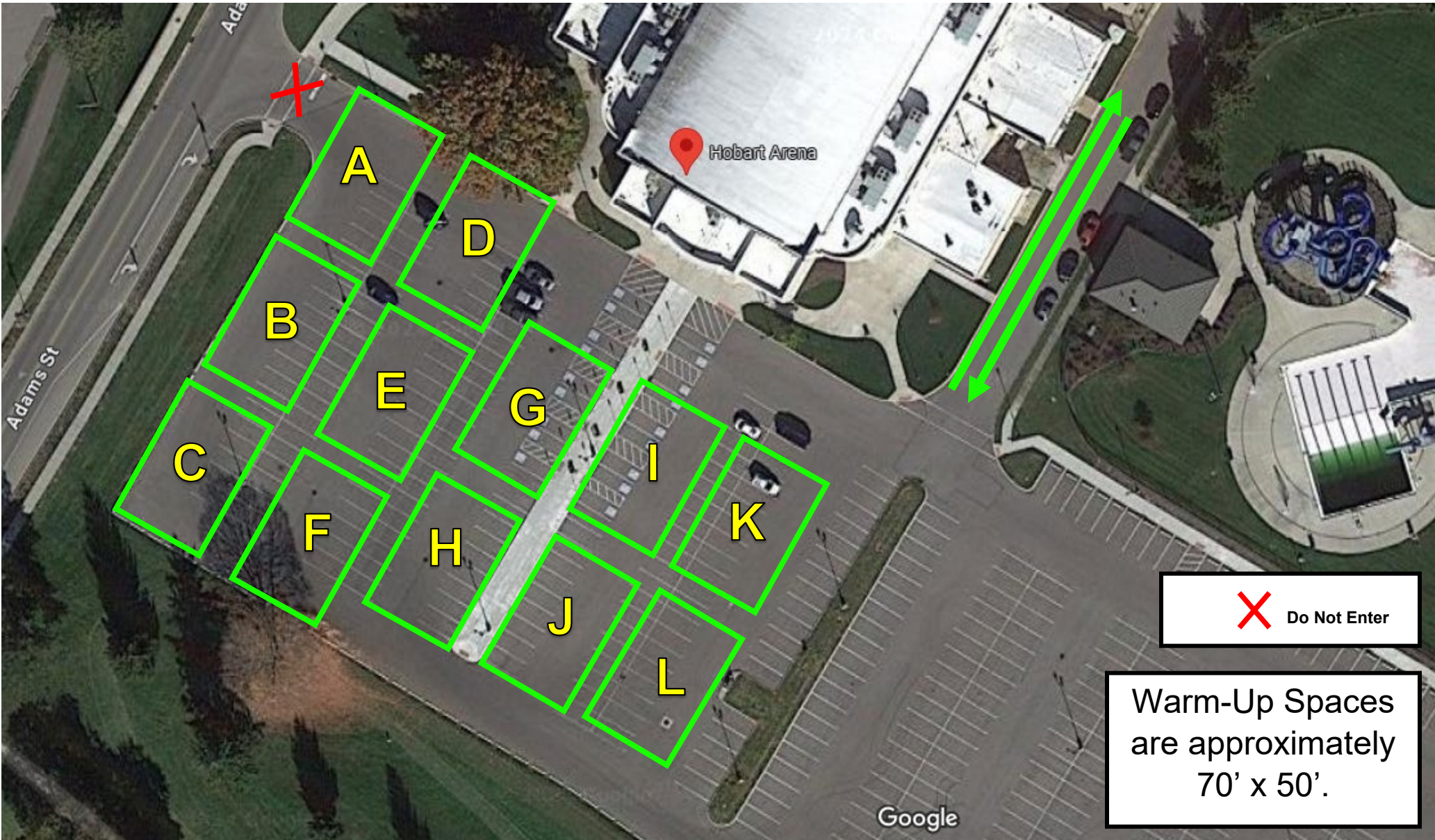
**Alpha Warm-Up Lot**

**X Do Not Enter**

# Percussion World Championships

Hobart Arena

Alpha Warm-Up Lot Detail



**X** Do Not Enter

Warm-Up Spaces  
are approximately  
70' x 50'.

# Percussion World Championships

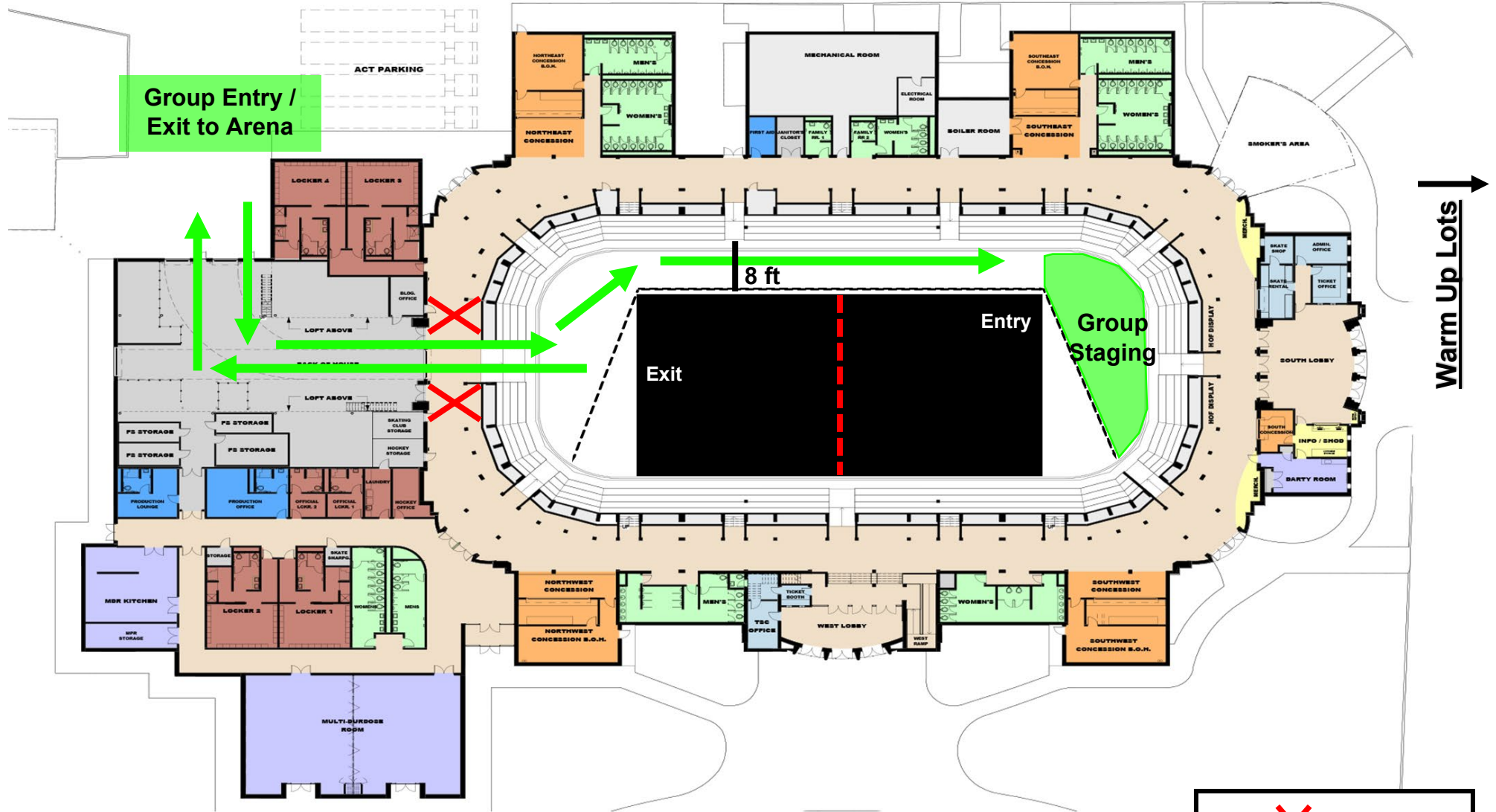
## Hobart Arena

### Group Interior Flow



Warm Up Tents ↑

Group Entry /  
Exit to Arena



Warm Up Lots ↓

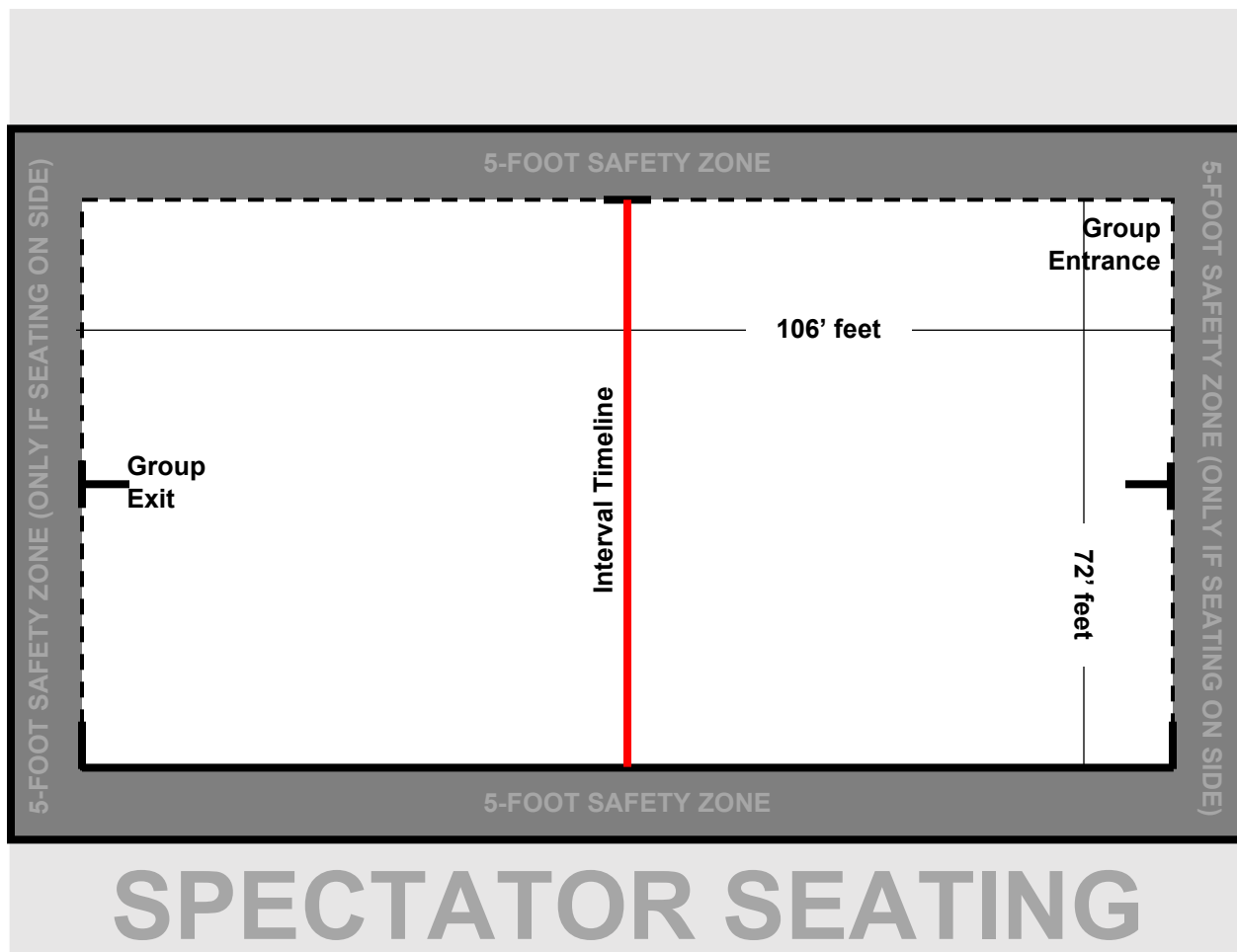
**X** Do Not Enter



## Percussion World Championships Competition Area Hobart Arena | Troy, OH

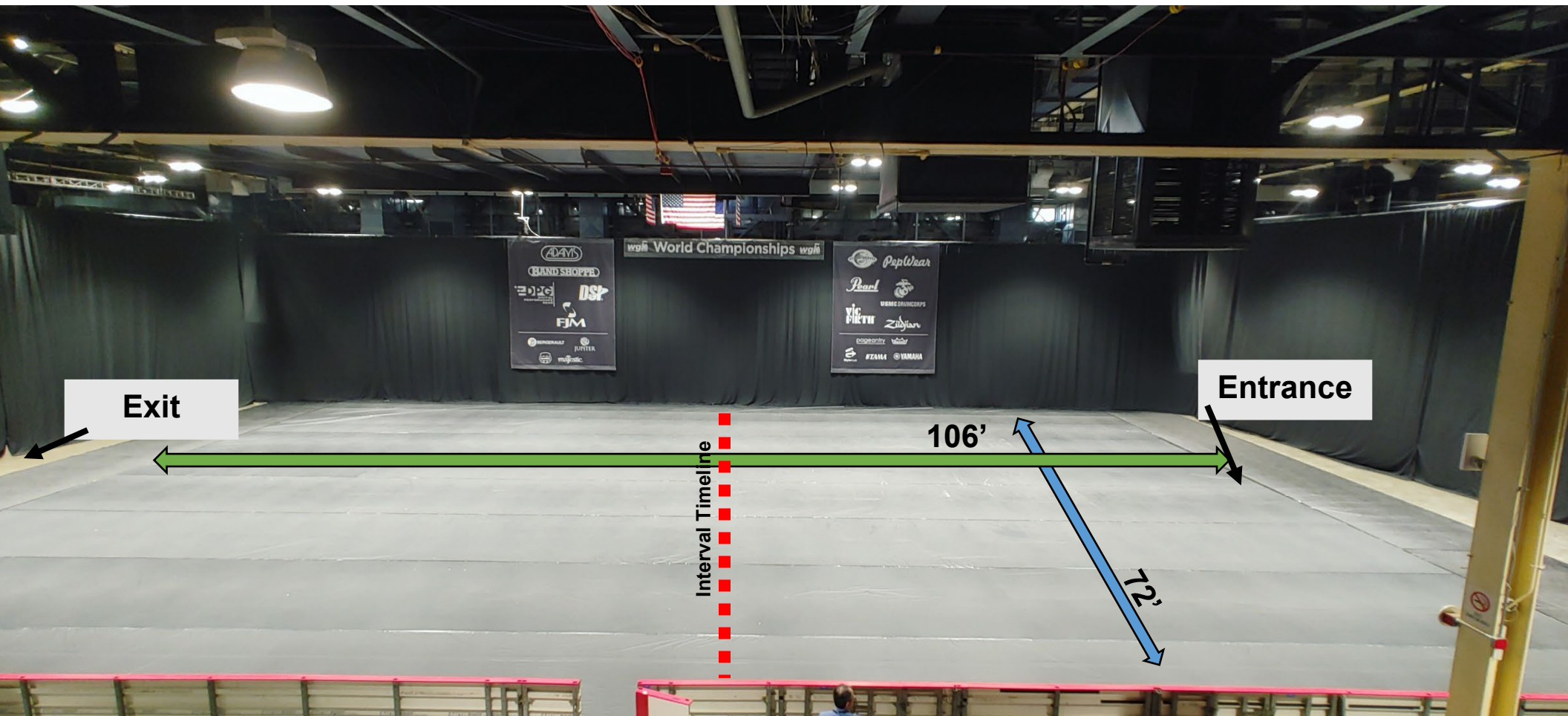
All WGI contest sites must have a minimum of seventy feet by one hundred feet (70' x 100') to accommodate a "safety zone" of five (5) feet from any spectator seating. This will ensure the minimum sixty-foot by ninety-foot (60' x 90') competition area within the minimum seventy feet by one hundred feet (70' x 100') of the contest site. If no spectators are seated on the left and right sides, then the safety zone will be eliminated on the left and right sides of the competition area and extend to the walls.

The competition area at this event measures 72' x 106'. All performing groups must be prepared to perform within that area. Floors (tarps) may not extend into the safety zones per rules found in the WGI Adjudication Manual and Rulebook.





**WGI Percussion World Championships**  
**Hobart Arena Competition Area**



**Exit**

**Entrance**

Interval Timeline

106'

72'

# Percussion World Championships

## Hobart Arena

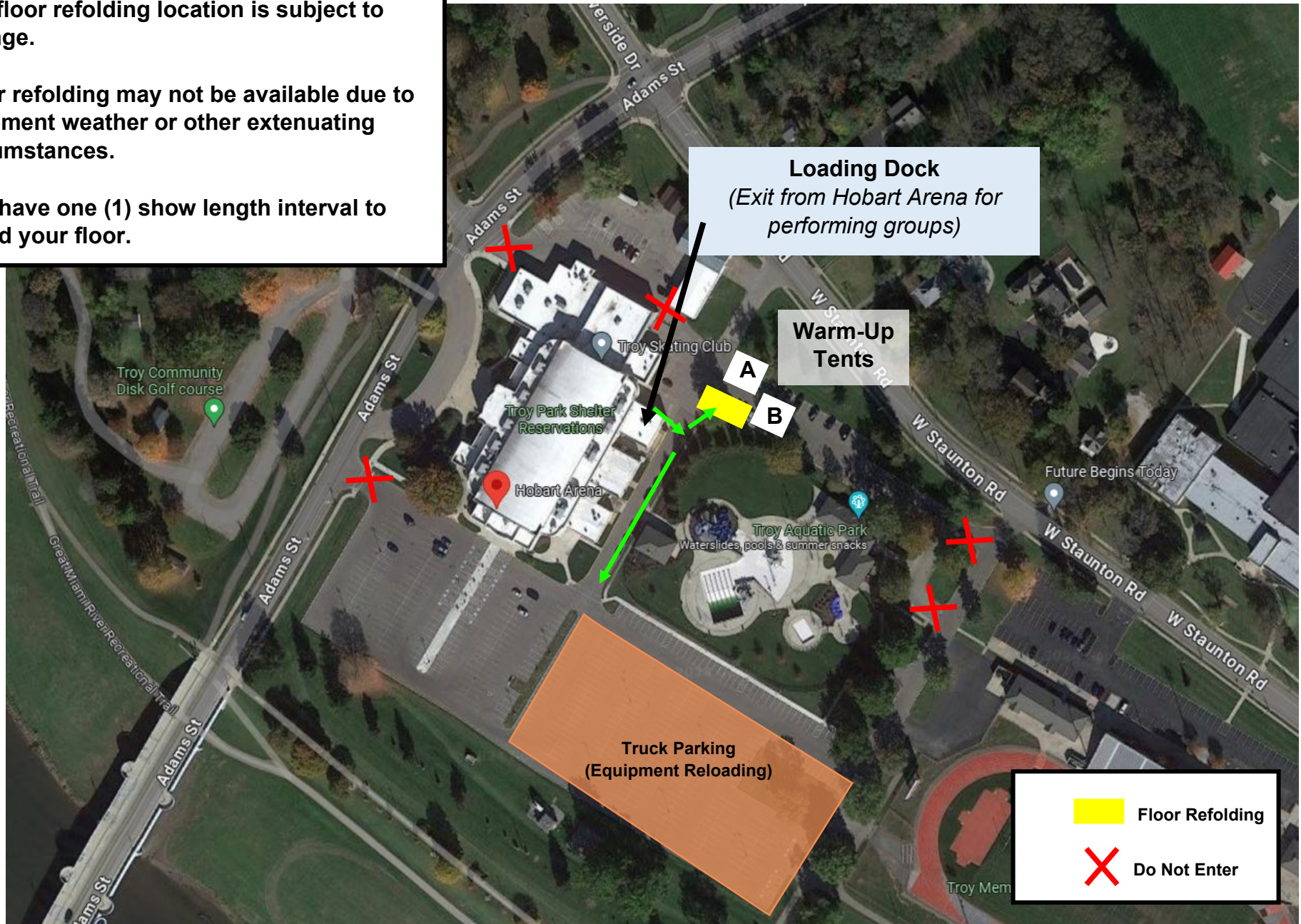
### Floor Refolding



The floor refolding location is subject to change.

Floor refolding may not be available due to inclement weather or other extenuating circumstances.

You have one (1) show length interval to refold your floor.



**Loading Dock**  
(Exit from Hobart Arena for performing groups)

**Warm-Up Tents**

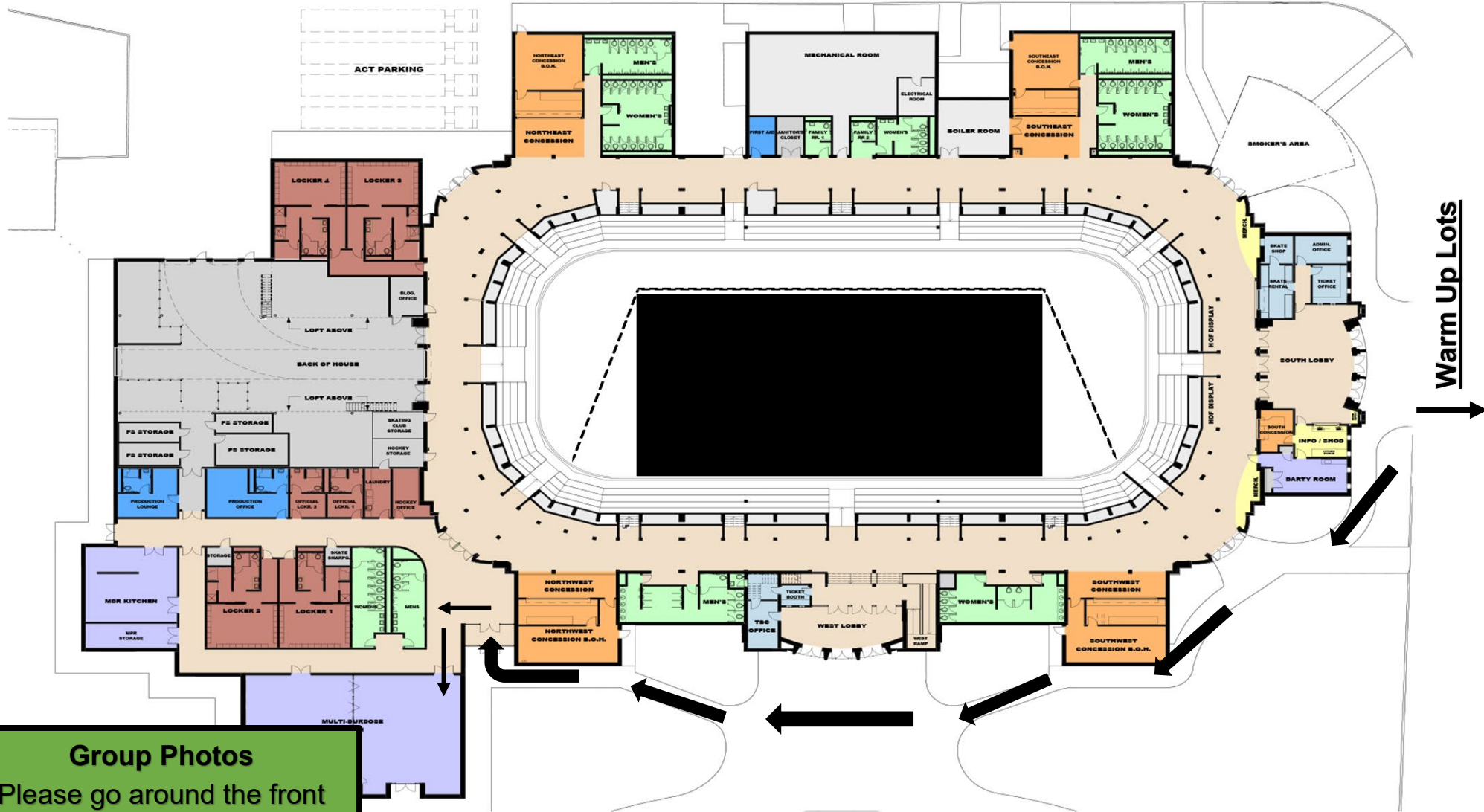
**Truck Parking**  
(Equipment Reloading)

	Floor Refolding
	Do Not Enter

**Percussion World Championships**  
**Hobart Arena**  
**Group Photo Area – Thursday ONLY**



**Warm Up Tents** ↑



↓ **Warm Up Lots**

**Group Photos**  
Please go around the front outside of the building and enter the door marked "Photo Area".

## Duke Park Parking Information

- Duke Park is located at 1670 Troy-Sidney Rd, Troy, OH 45373.
- Buses must move to Duke Park **immediately** after unloading. Buses should not return for reloading until the group is ready to depart.
- Trucks must be moved out of Truck Parking **60 minutes** after the group's performance concludes. Trucks may move to Duke Park after loading.
- There is **no shuttle** from the Duke Park to Hobart Arena – please plan accordingly.

