

WGI World Championship Practice Venue Information

Courts 4 Sports

854 Reading Road
Mason, OH 45040

- 📖 Groups may arrive **no more than 15 minutes prior** to their scheduled practice start time. If group is the first one in the building, the building will be open 10-15 minutes prior to your start time. Start times for this practice venue are no earlier than 7 am.
- 📖 Cars, large vehicles, buses, box trucks and semi trailers may all park in the parking lot adjacent to the venue.
- 📖 Prior to the groups' scheduled practice start time, groups may use **interior space** to do the following:
 - Use the restroom
 - Load in their equipment to wait for their available practice space
 - Stretch in the hallways as long as they are not blocking pathways
- 📖 Prior to the groups' scheduled practice start time, groups may use **exterior space** of the building to do the following:
 - Unload
 - Stretch
 - Play Music
 - Spin Equipment
 - Drum
 - Eat a meal
- 📖 After the group's practice time has concluded, groups may use the facility restrooms to prepare for their performance. *(Please remember to clean up after yourselves.)*
- 📖 The basketball goals are stationary in this facility and cannot be moved.
- 📖 **Absolutely NO outside food and/or drink** may be brought into this facility. This facility has a concession stand available during your group's practice time.

Practice Facility Spec Sheet

Practice Facility: _____

Type of facility: Single Gym Fieldhouse Style [Gym/Soccer] Open Space Auditorium Soccer Field

How many groups will potentially be in this facility at the same time? _____

Is there any place for instructors to view the practice venue from above? YES NO

Entrance Door Dimensions: _____

Center Bar in entrance door: YES NO N/A Removable Center Bar: YES NO

Facility Dimensions - Width wall to wall: _____ Length wall to wall: _____

Approximate Ceiling Height: _____

Obstructions in the area: _____

Stairs to contend with in any part of the facility: _____

Exit Door Dimensions: _____

Center Bar in exit door: YES NO N/A Removable Center Bar: YES NO

Comments: _____

Courts 4 Sports



© 2015 Google

Google earth

Imagery Date: 6/13/2014 39°20'32.72" N 84°19'58.84" W elev 855 ft eye alt 2477 ft

1994

Orange

Light Blue

Yellow

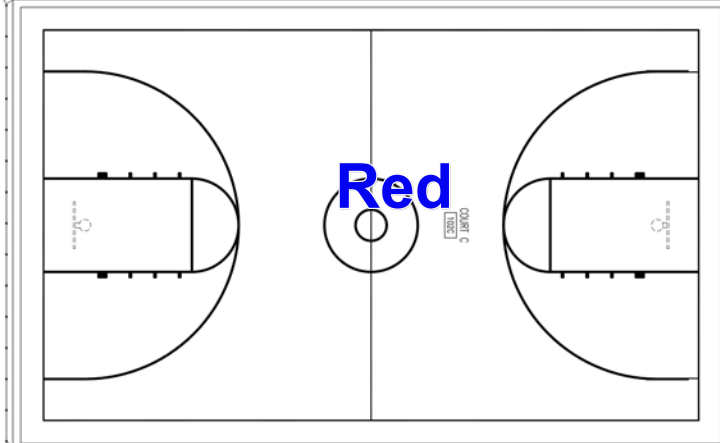
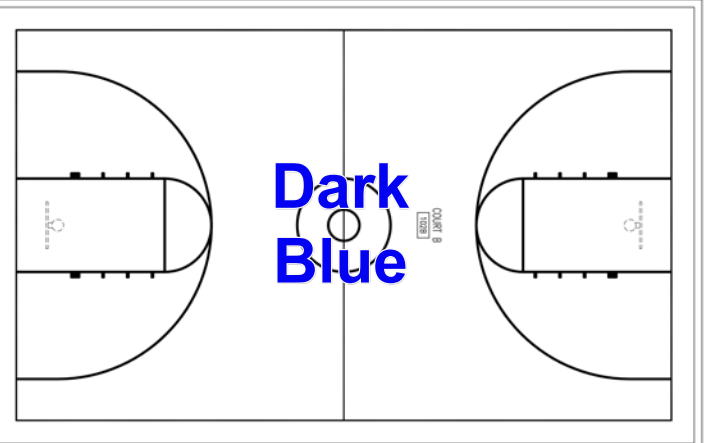
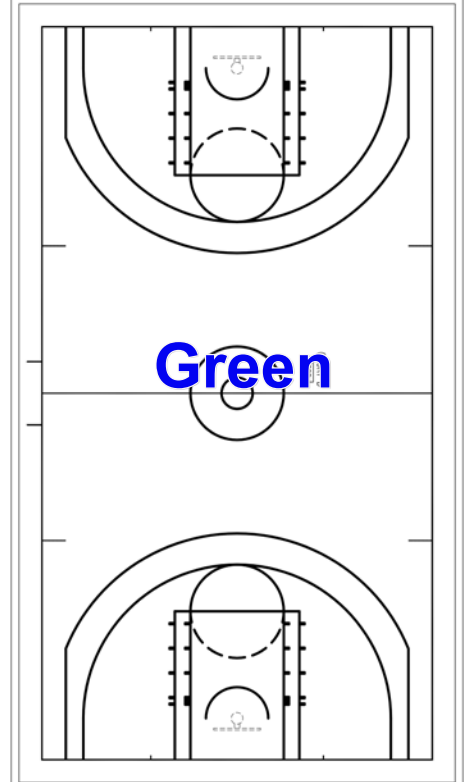
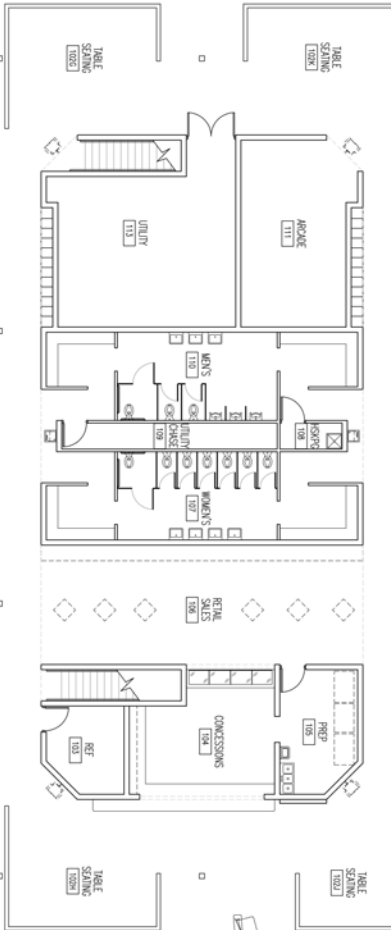
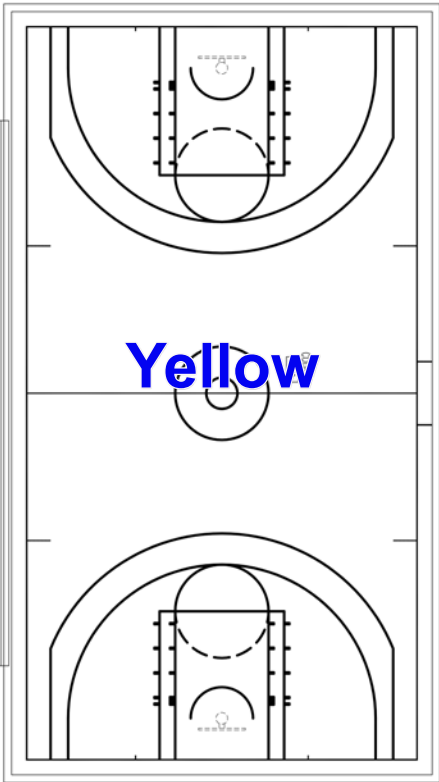
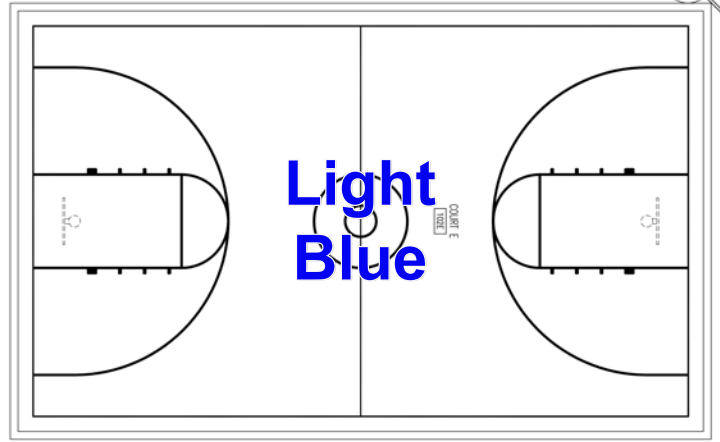
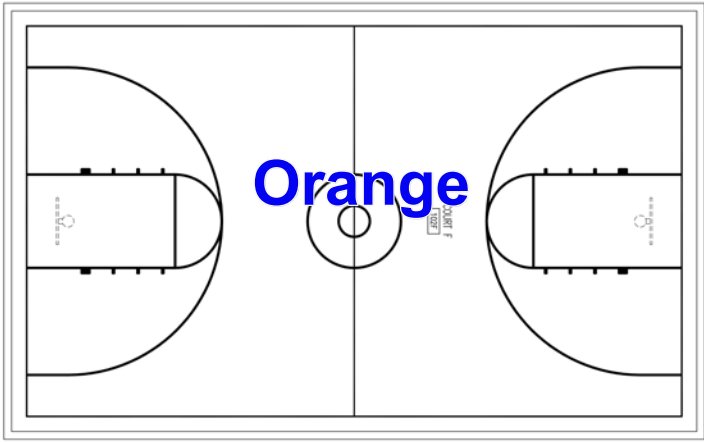
Green

Dark Blue

Red

Courts for Sports

Mason, OH



STORAGE
101

ASSEMBLY
101

**Courts 4 Sports
Blue Court**



**Courts 4 Sports
Blue Court**



Courts 4 Sports Lite Blue Court



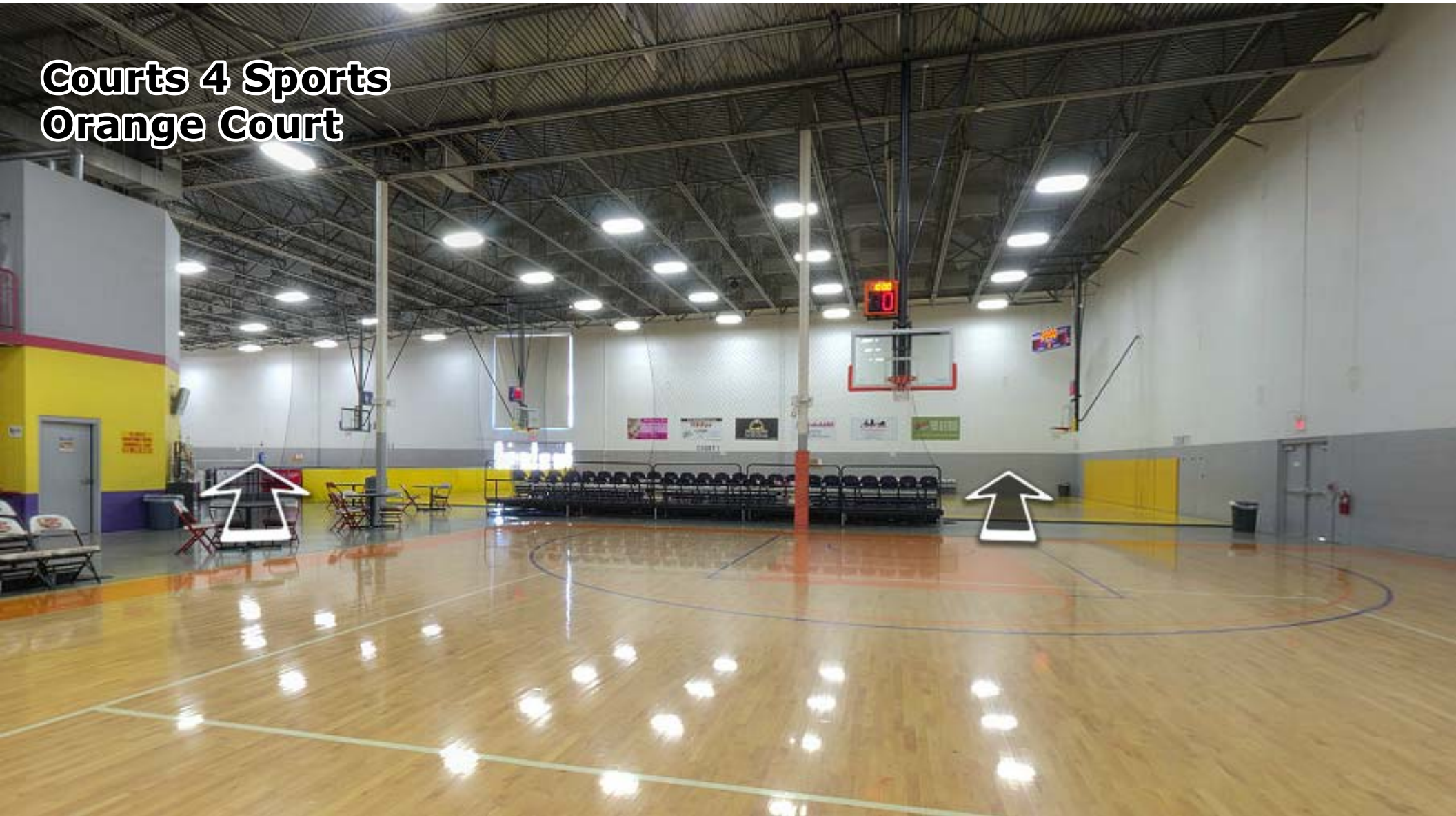
**Courts 4 Sports
Lite Blue Court**



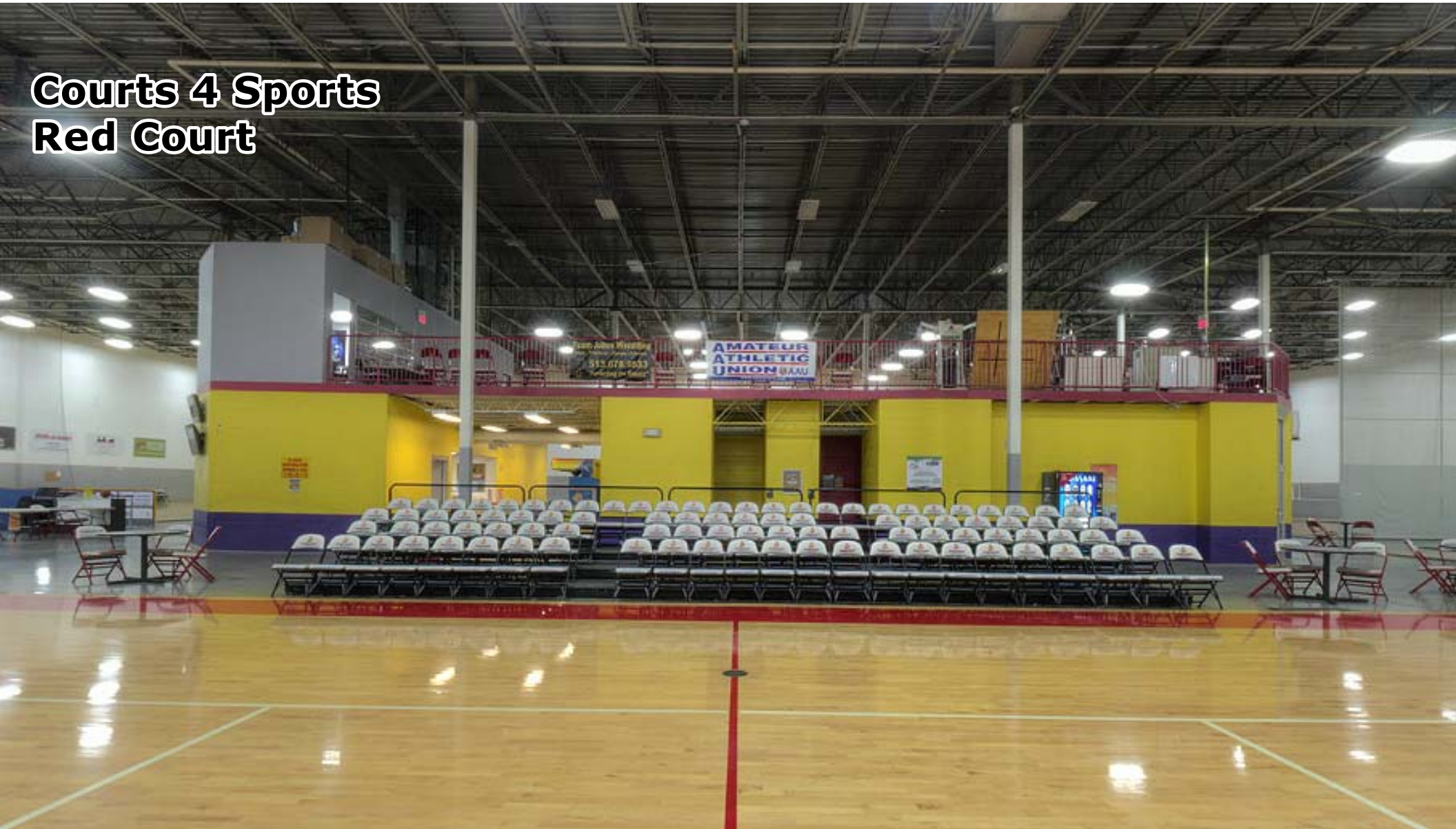
Courts 4 Sports Orange Court



Courts 4 Sports Orange Court



Courts 4 Sports Red Court



**Courts 4 Sports
Yellow Court**



Courts 4 Sports Yellow Court

HOME 0 20:00 GUEST 0
PERIOD 1
POINTS 0 0



COURT 1

AS A TEAM.
AS A TEAM.
AS A TEAM.



Courts 4 Sports Green Court



HOME 00:00 GUEST 00:00
PERIOD 3

Courts 4 Sports Green Court

COURT 3