



Percussion and Winds World Championships
Truist Arena at Northern Kentucky University Site Information
500 Louie B. Nunn Drive
Highland Heights, KY 41099

Parking / Vehicles

- Parking at Northern Kentucky University is very strict. Please instruct those traveling with you to park only in the designated WGI Spectator Parking area. There is a \$7 per vehicle parking fee – **cash only**.
- Each performing group will be allotted four (4) parking passes. These parking passes will allow free parking in the WGI Spectator Parking area. Buses and trucks do not need a parking pass.
- Performing groups' trucks and buses should arrive no earlier than the "Parking Lot Check-In Time" listed on the logistical schedule.
- Buses must move to the designated bus parking area (Callahan Hall Lot – *see attached map*) **immediately** after unloading. Buses should not return for reloading until the group is ready to depart. There is no shuttle from the Callahan Hall Lot to Truist Arena – please plan accordingly.
- Trucks must be moved out of the designated loading area 45 minutes after the group's performance concludes. Trucks may move to Callahan Hall Lot after loading. There is no shuttle from the Callahan Hall Lot to Truist Arena – please plan accordingly.
- Traffic can be very congested in Cincinnati and surrounding areas. Truist Arena is located just South of downtown Cincinnati. Please plan accordingly.

Dressing Facilities, Restrooms, & First Aid

- Dressing facilities are limited. Please arrive at the arena in competitive attire.
- Restrooms are available inside the arena.
- First Aid is available inside the arena.

General Group Logistics

- Warm-ups will be conducted in the Alpha Warm-Up Lot. There are two tents (A/B) outside the entrance to the loading dock that may be utilized. Please see the logistical schedule for your group's tent times. Please have a plan and supplies ready in the event that you will need to unload, load, and/or transition in the rain.
- Groups are not permitted to run power from any building power access. Please plan to use generators should you want power in unloading, warm up, and/or loading. Generators are NOT permitted inside the building.

- Please report to the loading dock no earlier than your “Arrive at Loading Dock” time listed on the logistical schedule.
- Anyone who is entering the arena with a performing group must have a valid badge or wristband. If there is a person entering with a performing group who has a valid spectator ticket, they must have their ticket scanned and the appropriate wristband on prior to entering the arena. Failure to secure a wristband prior to entering the arena will prohibit their entrance to the arena with the performing group.

Competition Area

- The competition area floor is concrete and covered with black tarp.
- A floor to ceiling black drape will adorn the back wall of the arena covering the entrances and exits.
- The competition area is 72' x 106'. Please see the competition area layout for more details.
- WGI will provide two 20 amp dedicated circuits on the front and back sidelines for performing groups.

Truist Arena Entry Procedures

- Concessions at Truist Arena are **cashless**. No outside food or beverages are permitted in the arena.
- Groups entering through the loading dock for their performance will not be required to have a clear bag, but should be prepared for bag checks by arena personnel.
- Anyone entering through the Spectator Entrance and Performer/Staff Re-Entry will be subject to the **Clear Bag Policy**.
- Please see the attached information regarding security screening procedures and prohibited items.

Safety and Weather Communications

- In the event of inclement weather and/or other safety concerns, information will be sent to the groups from WGI via CompetitionSuite. Please be prepared to disseminate the information to your group, staff, volunteers, etc.
- Tents are **not** suitable for sheltering in the event of inclement weather.

Truist Arena Prohibited Items

- Aerosol Cans
- Alcohol, drugs, illegal substances, or any paraphernalia associated with drug use
- Animals
- Audio/Video recorders
- Backpacks
- Bags larger than 12" by 6" by 12"
- Balloons
- Camera cases
- Cameras with removable lenses or flash
- Cans, bottles, coolers, or other similar containers
- Fireworks
- Flags, signs, or banners
- Flowers or Gifts
- Hover boards
- Laser pens/pointers
- Noisemakers such as air horns or whistles
- Outside food or drinks or personal drink containers
- Tripods, monopods, other professional photography equipment or selfie sticks
- Pepper spray/mace
- Weapons of any type, including chains, knives, firearms, and spiked jewelry
- No Smoking or Vaping is permitted at Truist Arena
- **Other items deemed unacceptable by event/building management**

If an item is revealed during a search, patrons may dispose of the item, or they may return the item to their vehicle. Truist Arena does not safeguard any personal belongings or items of any type.

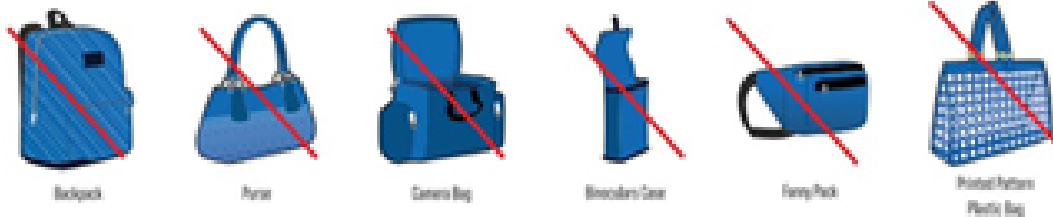
Truist Arena Security Screening Procedures – General Public

- Please plan to arrive early.
- All guests and employees are subject to search upon entry.
- Security will perform visual inspections and bag checks using dowels at all entrance points for the particular event, including the employee entrance and the back of house loading dock entrance.
- Event attendees will be screened at the entrances, looking for above prohibited items.
- Bags will be checked.
- Medical bags exceeding 14" x 14" x 6" will be tagged with a bright colored wristband to indicate bag has been inspected.
- Patrons have the option of discarding prohibited items at entrance point or taking items back to their vehicle.

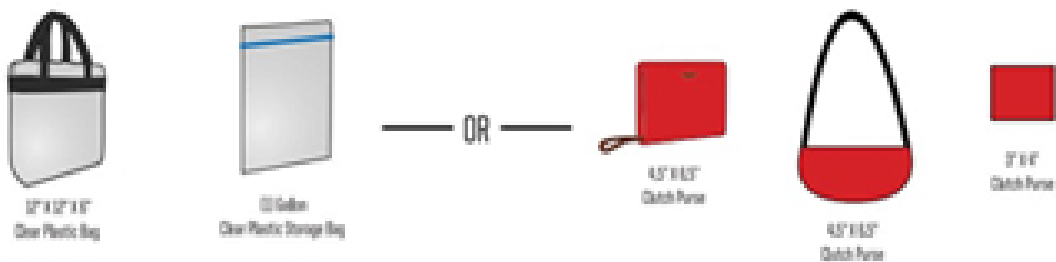
Truist Arena Clear Bag Policy - In Effect at Spectator Entry and Performer & Staff Re-Entry

- 12" by 6" by 12" clear bag + 1 clutch bag per guest permitted.
- One Gallon Ziploc storage bag permitted.
- One Clutch bag no larger than 4.5" x 6.5" with or without straps permitted. Clutch does not have to be clear.
- Exceptions can be made for Medical bags after a proper inspection.

PROHIBITED BAGS



APPROVED BAGS/PURSES



WGI 2024 PERCUSSION WINDS WORLD CHAMPIONSHIPS

The following known frequencies will be in use at the World Championships sites:

UD Arena

| | | | |
|---------|-------|---------------|----------|
| 471.15 | 648.4 | 5.7 - 5.9 GHz | 451.375 |
| 475.375 | 558.3 | 1.9 GHz | 461.225 |
| 487.925 | 650.2 | 2.4 & 5GHz | 469.925 |
| 503.125 | 650.7 | 464.75 | 461.4375 |
| 515.9 | 652.5 | 464.925 | 464.05 |
| 524.55 | 655 | 464.5875 | |
| 527.5 | 681.1 | 464.9875 | |
| 640 | 701.7 | 464.75 | |
| 643.5 | 682.3 | 469.75 | |
| 644.7 | 860.1 | 451.925 | |

Nutter Center

451 Mhz – 465 Mhz

596 Mhz – 607 Mhz

626 Mhz – 668 Mhz

Truist Arena

451 Mhz – 465 Mhz

626 Mhz – 668 Mhz

Hobart Arena

451 Mhz – 465 Mhz

800 Mhz

Percussion and Winds World Championships

Truist Arena

Group Parking Map



PERFORMING GROUPS:
Performing groups' trucks and buses should arrive at the entrance marked on this map (off of Louie B Nunn Dr) at "Parking Lot Check-In" time (see Logistical Schedule). Buses and trucks must go around the roundabout to get to the entrance.

Buses will unload and must immediately move to the designated bus parking area (Callhan Hall Lot). Return to load only when the group is ready to depart.

Trucks should follow parking directions of WGI Staff and Volunteers, and they must depart the loading area 45 minutes after the group's performance concludes.

Performing group vehicles with WGI parking passes will be permitted to park in the Welcome Center Parking Garage for free.

SPECTATOR PARKING: Welcome Center Parking Garage. There is a \$7 per vehicle parking fee – **cash only**.

ADA PARKING: Welcome Center Parking Garage. There is a \$7 per vehicle parking fee – **cash only**.

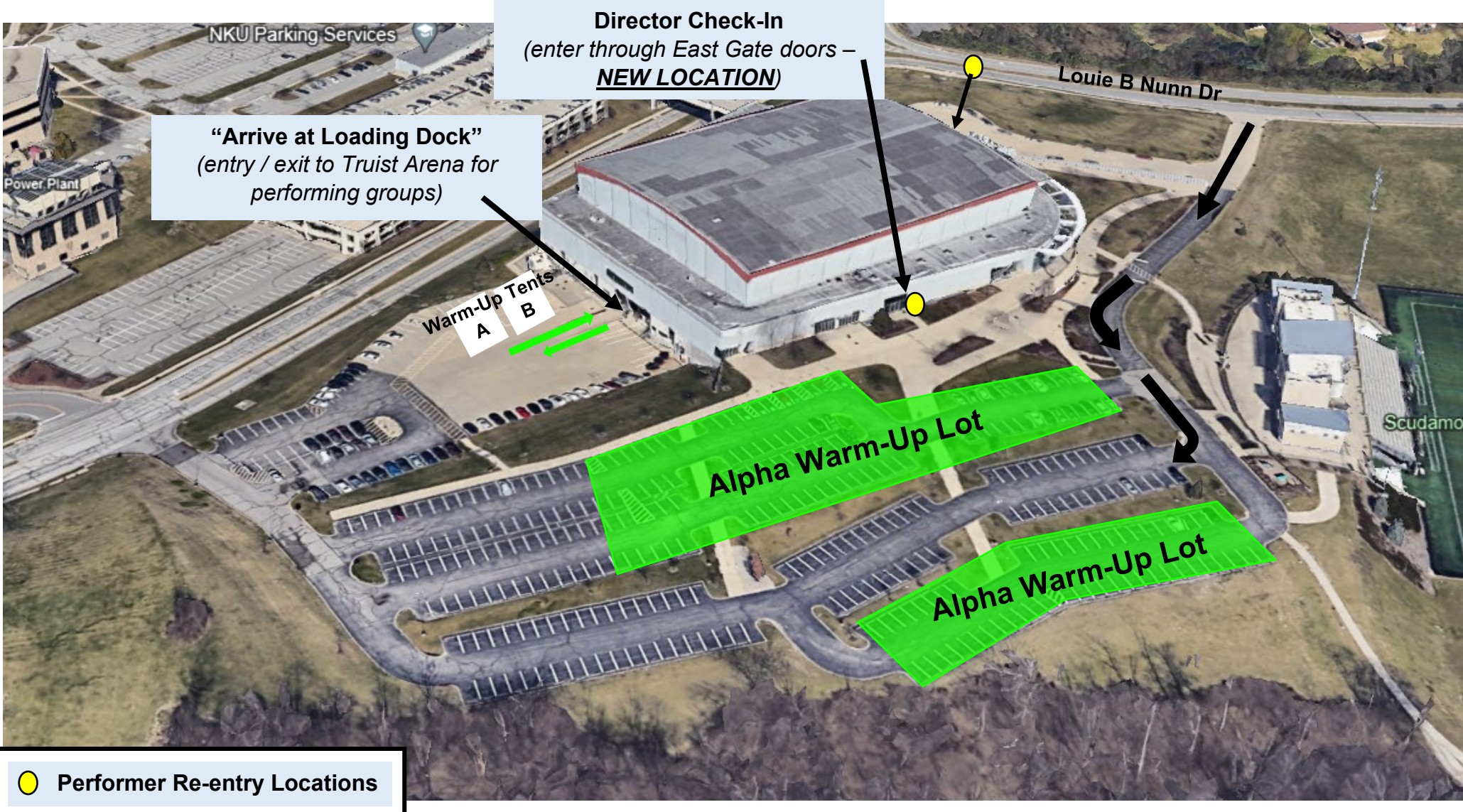
VENDOR PARKING: Welcome Center Parking Garage. Parking fee waived for those with their WGI Vendor Parking Pass.

VIP PARKING: Welcome Center Parking Garage. Parking fee waived for those with their WGI VIP Parking Pass.

Percussion and Winds World Championships

Truist Dayton Arena

Group Flow Map



NKU Parking Services

Director Check-In
(enter through East Gate doors – **NEW LOCATION**)

"Arrive at Loading Dock"
(entry / exit to Truist Arena for performing groups)

Warm-Up Tents
A B

Alpha Warm-Up Lot

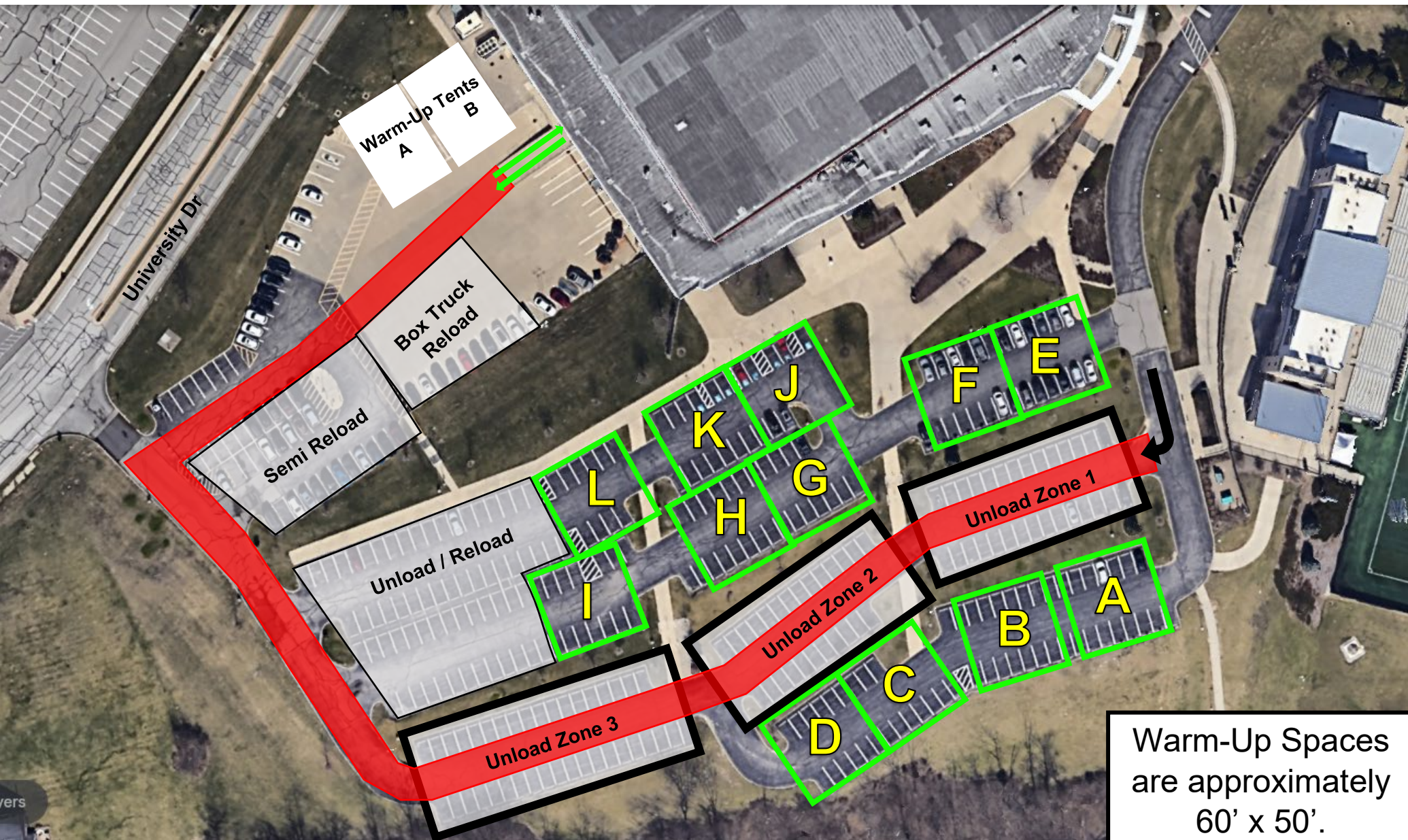
Alpha Warm-Up Lot

Louie B Nunn Dr

Scudamor

● Performer Re-entry Locations

Percussion and Winds World Championships
Truist Arena
Alpha Warm-Up Lot Detail



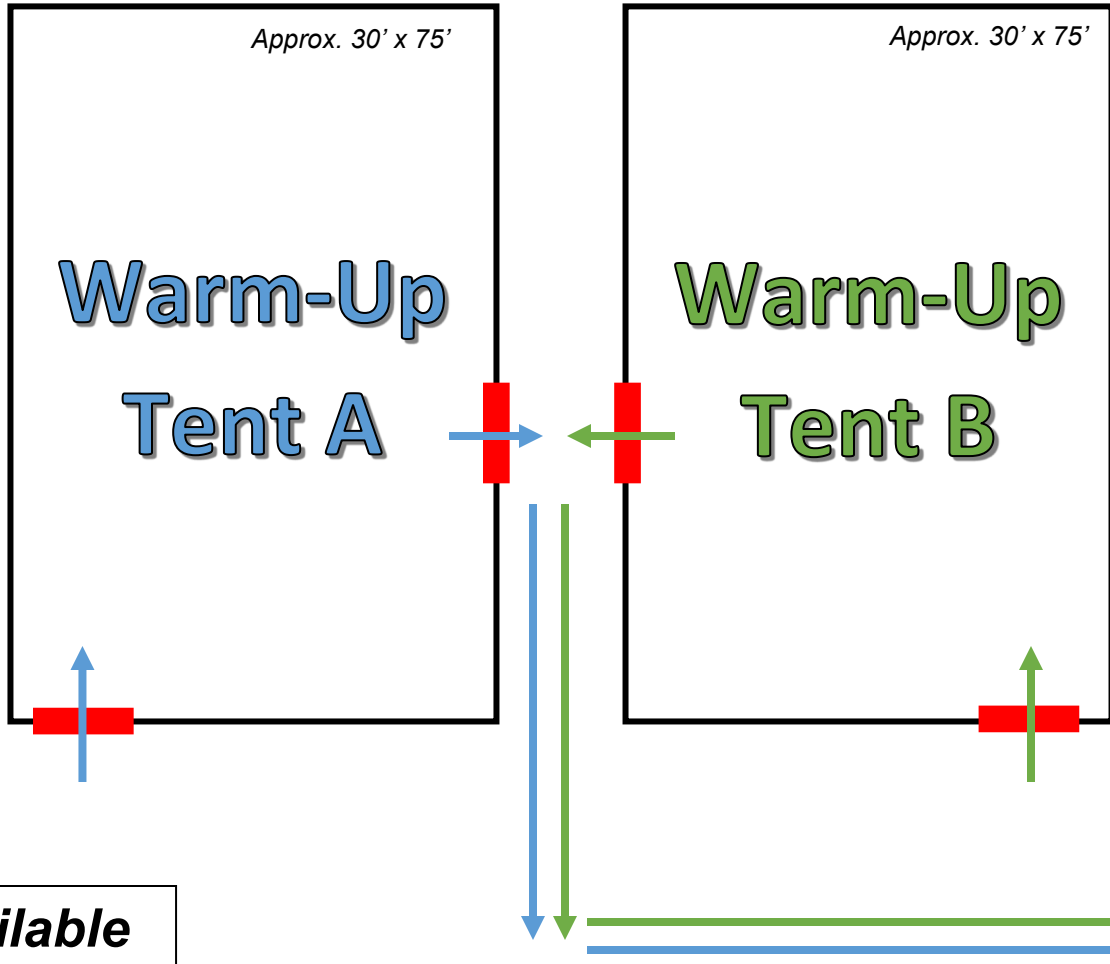
Warm-Up Spaces
are approximately
60' x 50'.

Do not block.

Percussion and Winds World Championships

Truist Arena

Warm-Up Tent Details



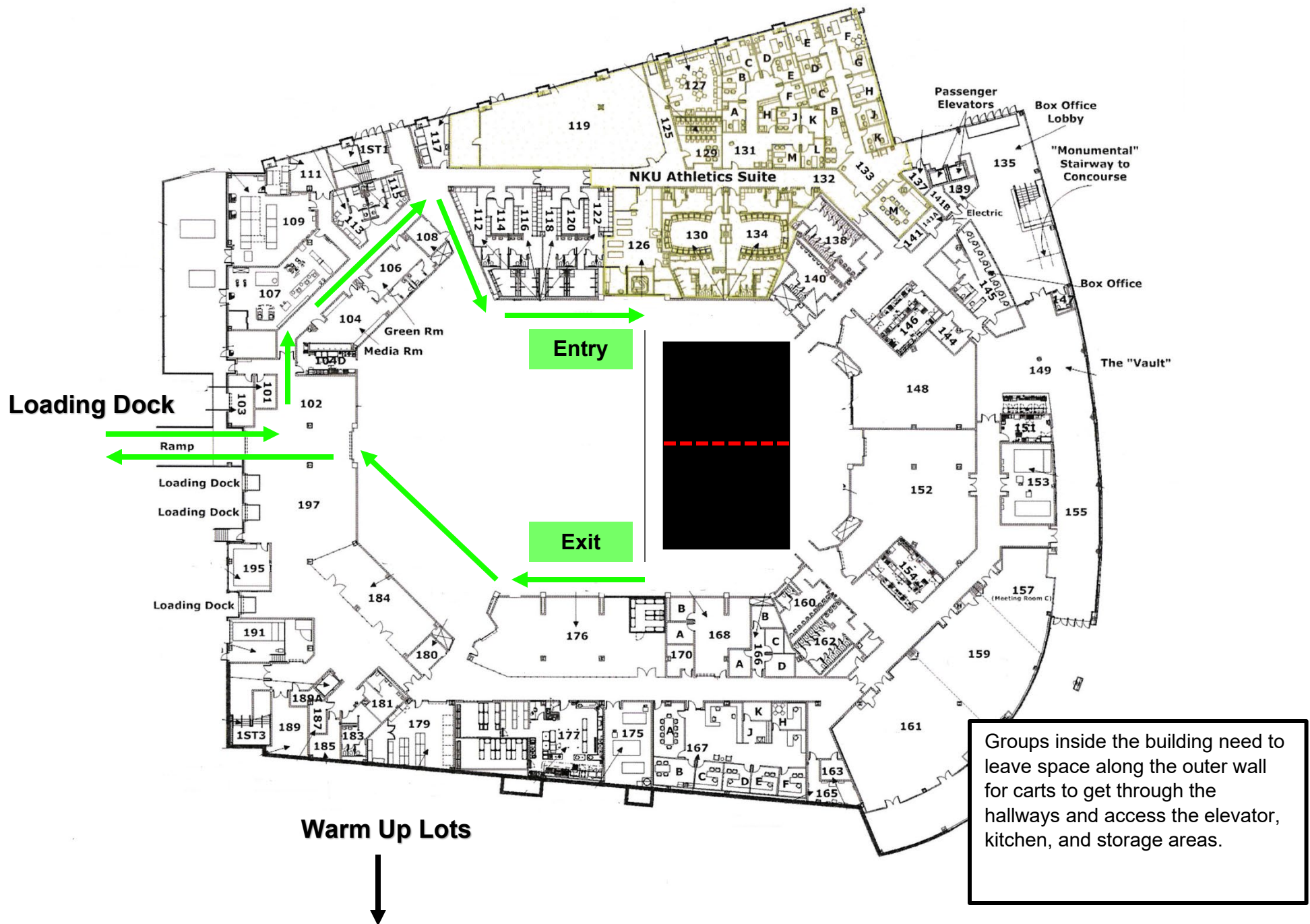
***No power available
in warm up areas.***

ARENA

RAMP

Percussion and Winds World Championships

Truist Arena Group Interior Flow

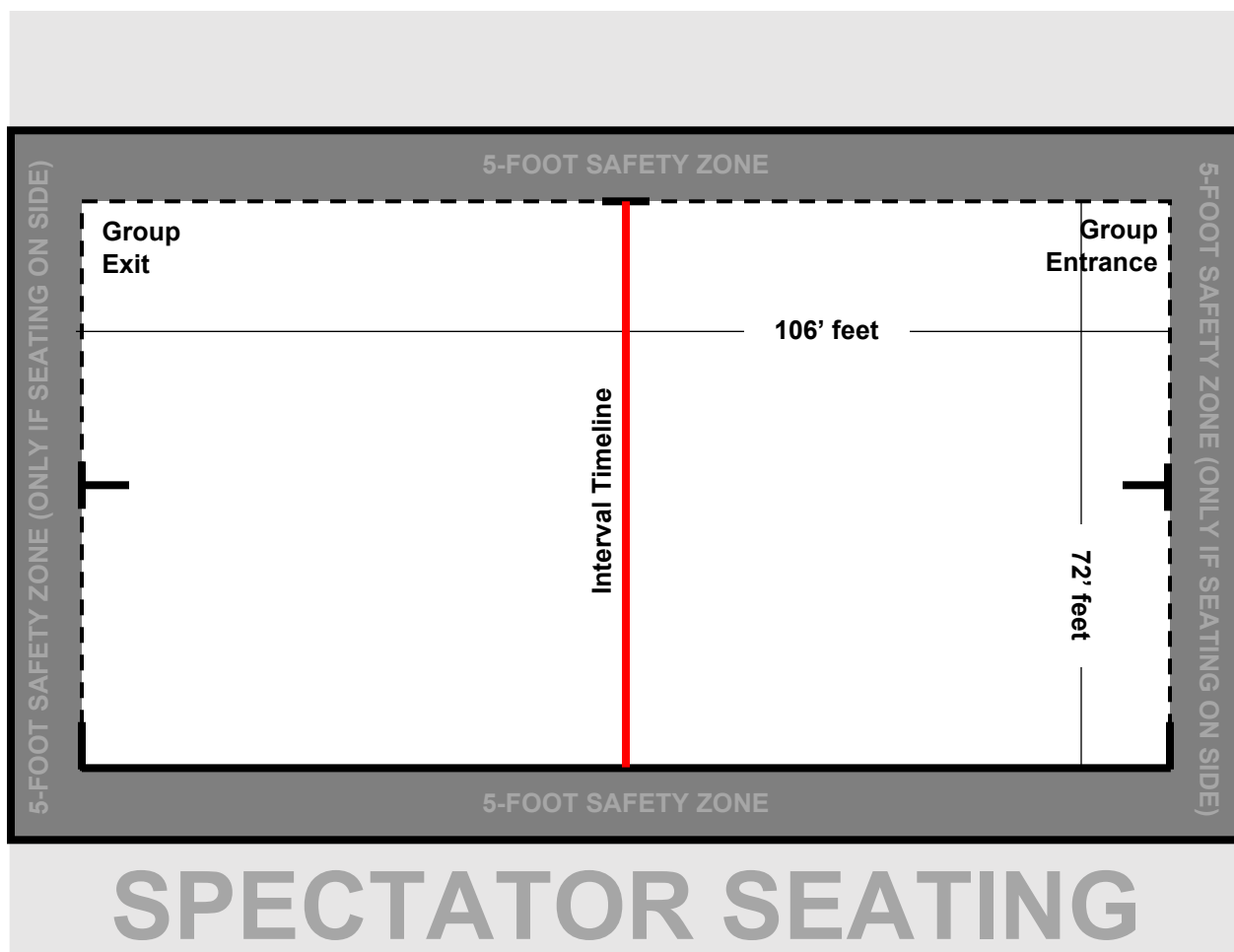




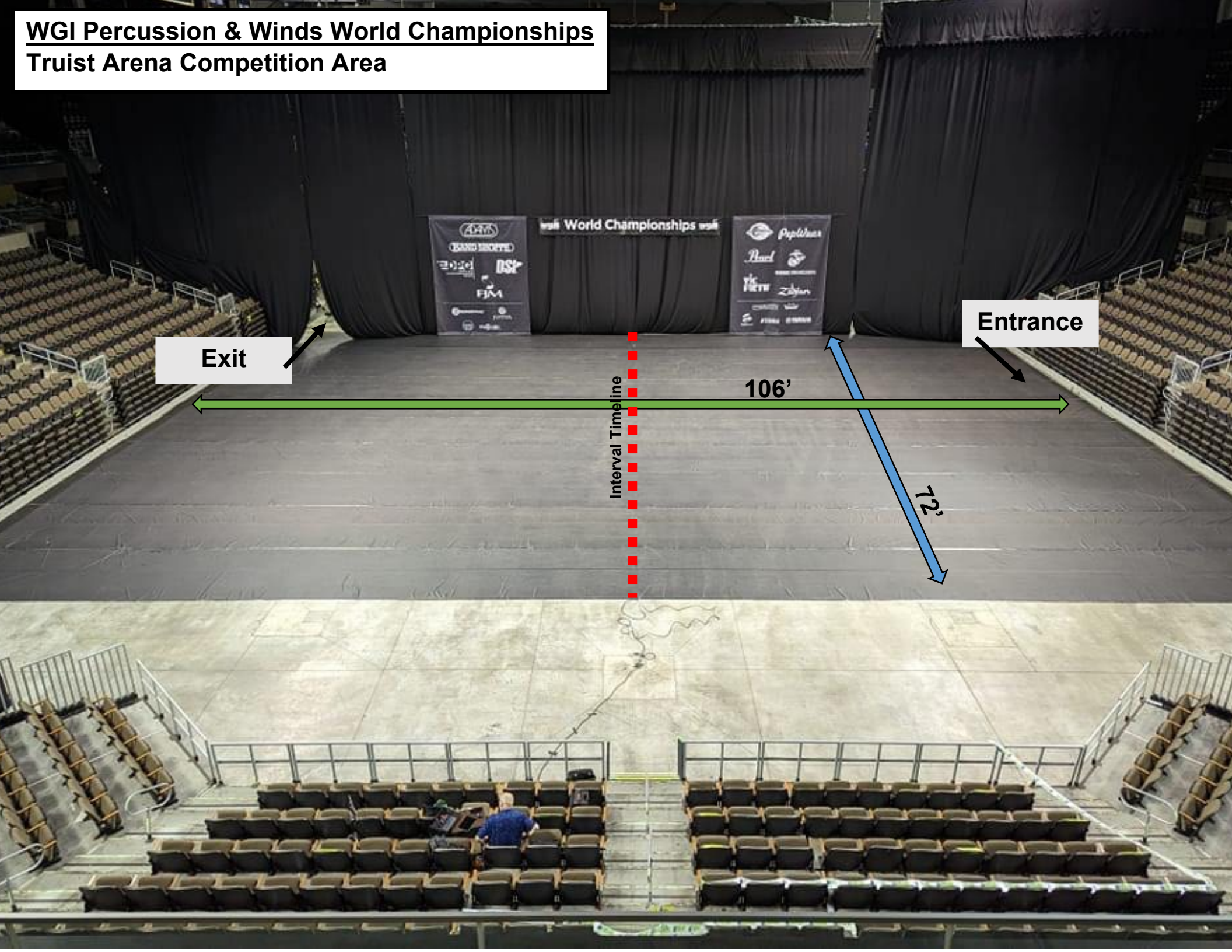
Percussion & Winds World Championships Competition Area Truist Arena | Highland Heights, KY

All WGI contest sites must have a minimum of seventy feet by one hundred feet (70' x 100') to accommodate a "safety zone" of five (5) feet from any spectator seating. This will ensure the minimum sixty-foot by ninety-foot (60' x 90') competition area within the minimum seventy feet by one hundred feet (70' x 100') of the contest site. If no spectators are seated on the left and right sides, then the safety zone will be eliminated on the left and right sides of the competition area and extend to the walls.

The competition area at this event measures 72' x 106'. All performing groups must be prepared to perform within that area. Floors (tarps) may not extend into the safety zones per rules found in the WGI Adjudication Manual and Rulebook.



WGI Percussion & Winds World Championships
Truist Arena Competition Area



Exit

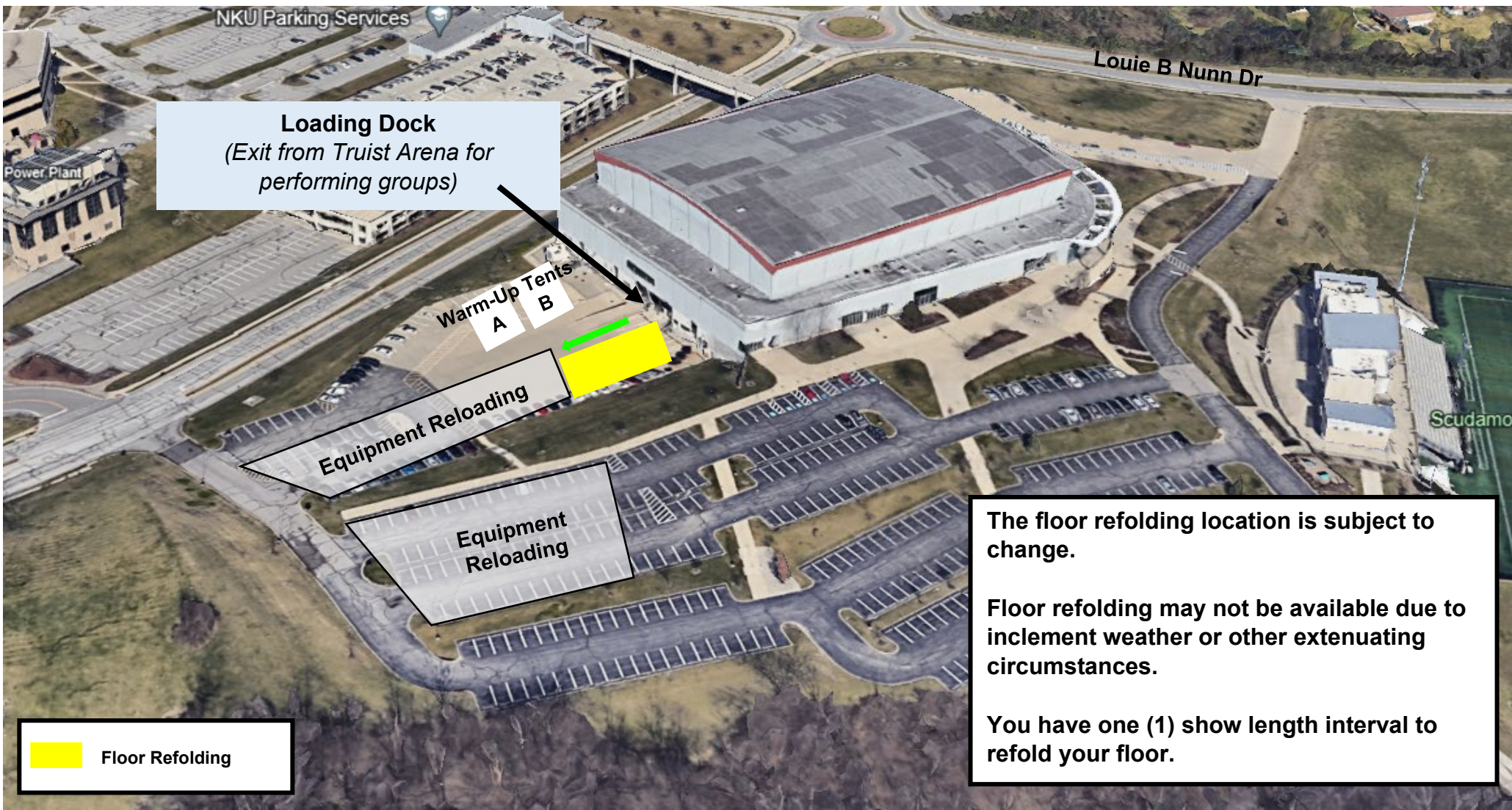
Entrance

Interval Timeline

106'

72'

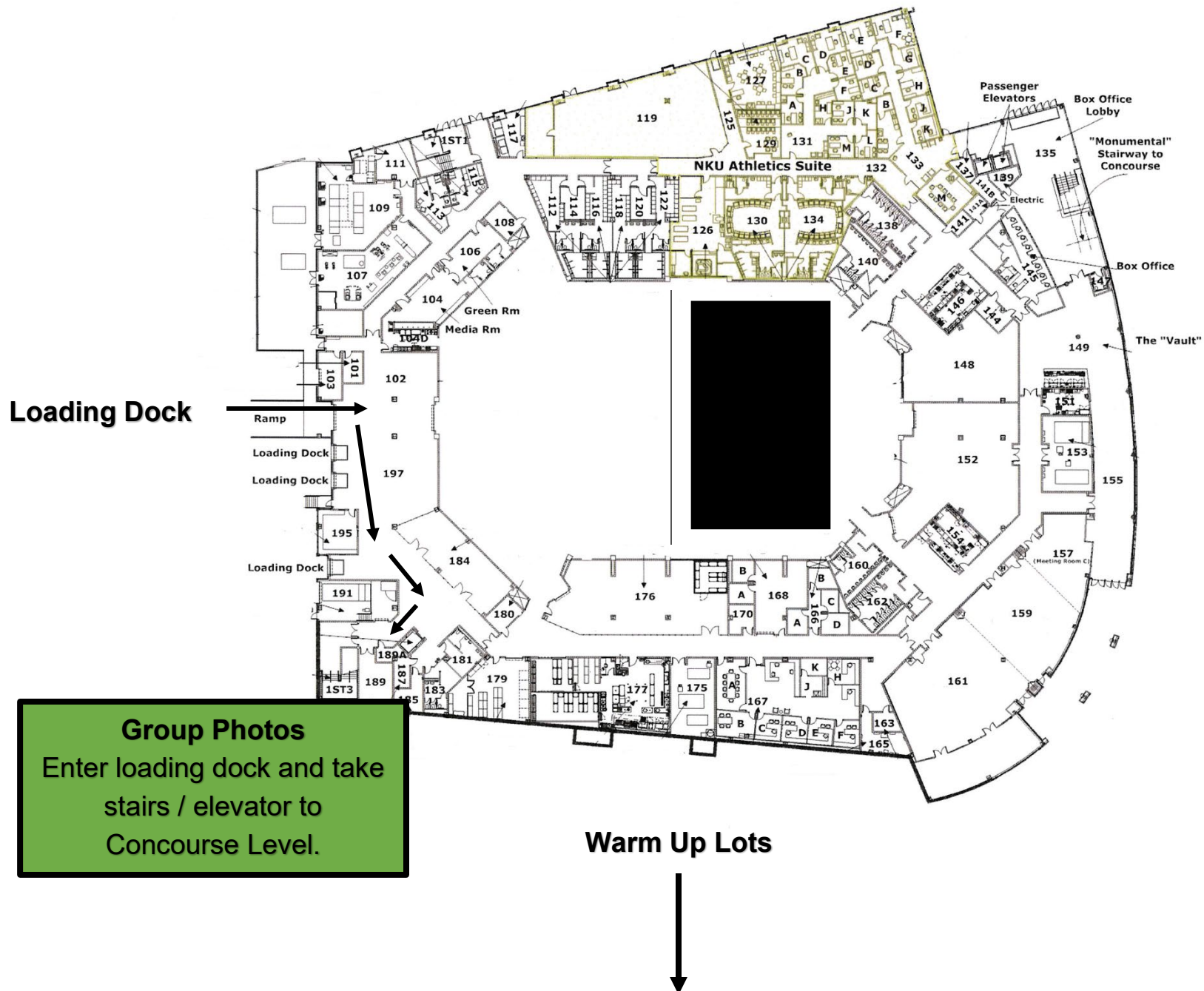
Percussion and Winds World Championships
Truist Dayton Arena
Floor Refolding



Percussion and Winds World Championships

Truist Arena

Group Photo Area – *Thursday ONLY for Percussion & Saturday ONLY for Winds*



Callahan Hall Lot Parking Information

- Callahan Hall Lot is located at 3510 Alexandria Pike, Newport KY 41076.
- Buses must move to the Callahan Hall Lot **immediately** after unloading. Buses should not return for reloading until the group is ready to depart.
- Trucks must be moved out of their designated loading area **45 minutes** after the group's performance concludes. Trucks may move to Callahan Hall Lot after loading.
- There is **no shuttle** from the Callahan Hall Lot to Truist Arena – please plan accordingly.

