

WGI World Championship Practice Venue Information

Sinclair Community College – Centerville Campus Gym Rooms 144 & 148 5800 Clyo Road Dayton, OH 45459

- 📖 Groups may arrive **no more than 15 minutes prior** to their scheduled practice start time. If group is the first one in the building, the building will be open 10-15 minutes prior to your start time. Start times for this practice venue are no earlier than 6 am.
- 📖 Cars, large vehicles, buses, box trucks and semi trailers may all park in the parking lot adjacent to the venue. School is in session during the majority of the time. Please see the map with regards to where groups may park.
- 📖 Prior to the groups' scheduled practice start time, groups may use **interior space** to do the following:
 - Use the restroom
 - Load in their equipment to wait for their available practice space
 - Stretch in the hallways as long as they are not blocking pathways or disturbing the groups that are currently in the gyms or students who may be in the area.
- 📖 Prior to the groups' scheduled practice start time, groups may use any **exterior space** to do the following.
 - Unload equipment
 - Eat a meal
 - Stretch, Spin, or Drum (please see map for specific areas where this is permitted)
- 📖 After the group's practice time has concluded, groups may use the facility restrooms to prepare for their performance. There are shower facilities available for your use. *(Please remember to clean up after your group.)*
- 📖 Water, sports drinks, sodas and snacks may be brought inside the building. Crock pots and full meals are not permitted inside. *(Please remember to clean up after your group.)*

Practice Facility Spec Sheet

Practice Facility: _____

Type of facility: Single Gym *Fieldhouse Style:* Gym or Soccer
Open Space Tennis Court Soccer Field

How many groups will potentially be in this facility at the same time? _____

Is there any place for instructors to view the practice venue from above (*ie bleachers or a stage*)? YES NO

Entrance/Exit Door Dimensions: _____

Center Bar in entrance door: YES NO N/A Removable Center Bar: YES NO

Facility Dimensions - Width wall to wall: _____ Length wall to wall: _____

Approximate Ceiling Height: _____

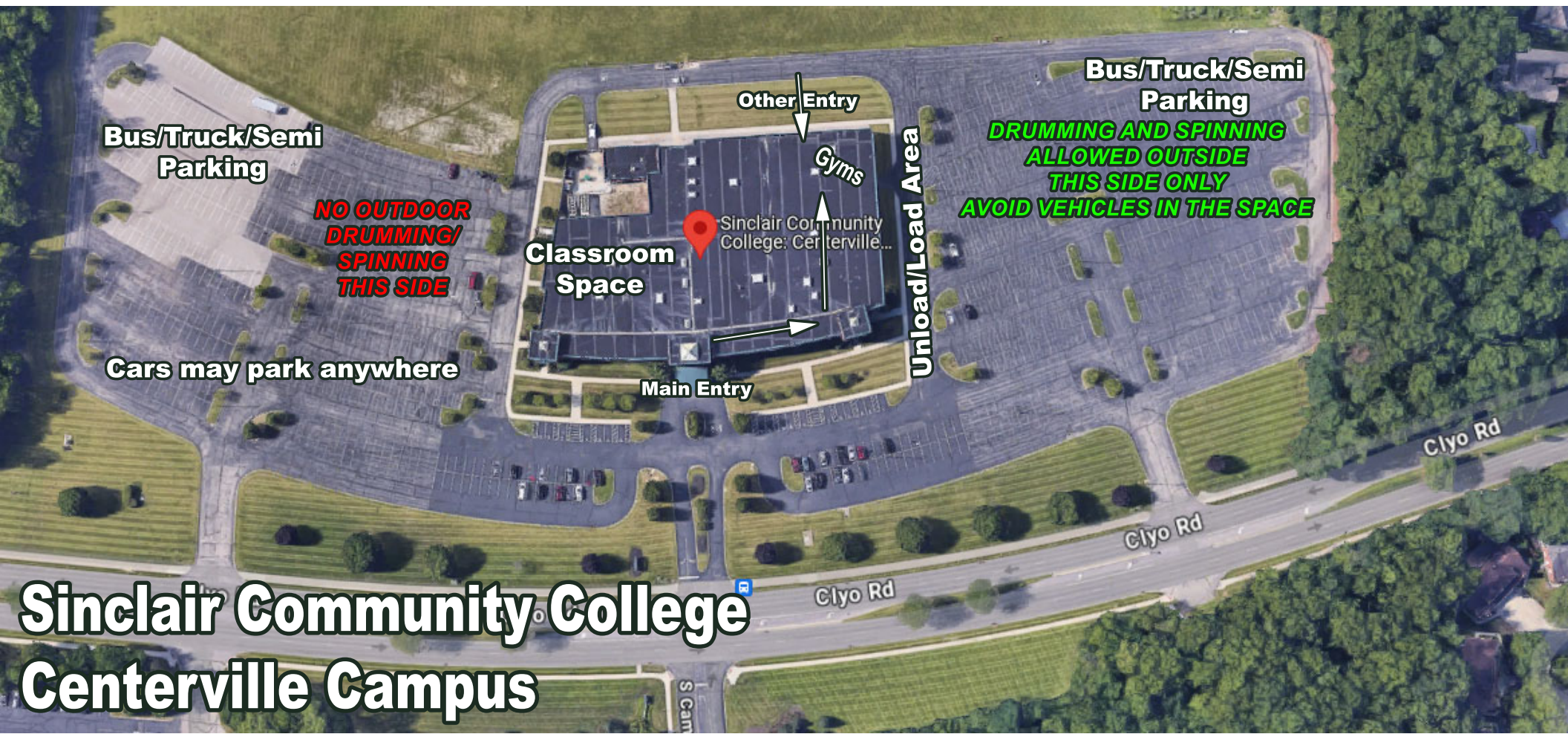
Obstructions in the area: _____

Stairs to contend with in any part of the facility: _____

Exit Door Dimensions (if different than entrance): _____

Center Bar in exit door: YES NO N/A Removable Center Bar: YES NO

Comments: _____



**Bus/Truck/Semi
Parking**

**NO OUTDOOR
DRUMMING/
SPINNING
THIS SIDE**

Cars may park anywhere

**Classroom
Space**

Other Entry

Gyms

Sinclair Community
College: Centerville...

Main Entry

Unload/Load Area

**Bus/Truck/Semi
Parking**

**DRUMMING AND SPINNING
ALLOWED OUTSIDE
THIS SIDE ONLY
AVOID VEHICLES IN THE SPACE**

Clyo Rd

Clyo Rd

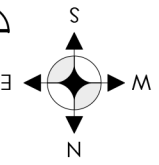
Clyo Rd

S GATE

Sinclair Community College Centerville Campus

**Enter/Exit
Direct to outside**

**Gym
144**



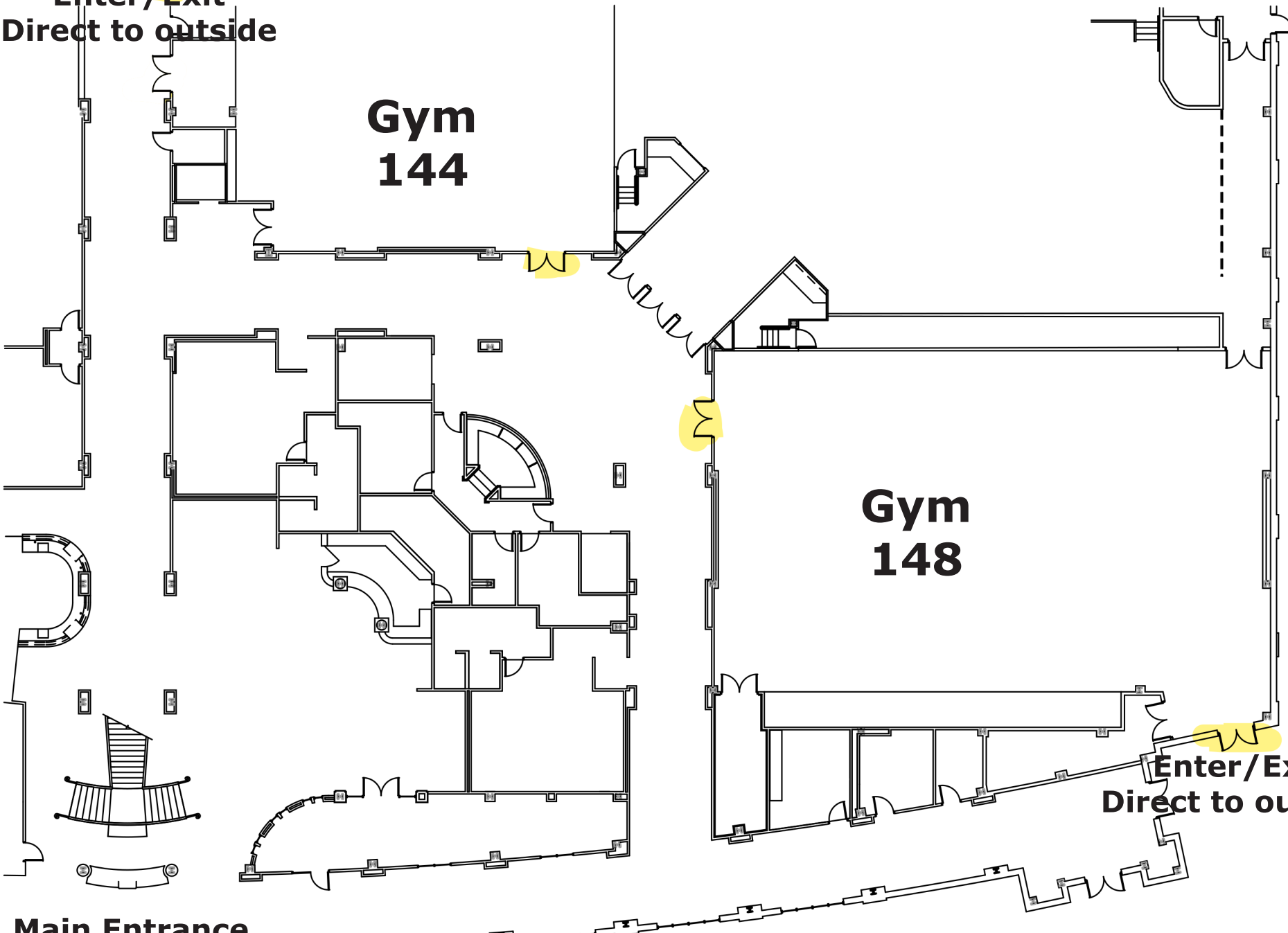
Parking

**Gym
148**

**Enter/Exit
Direct to outside**

Main Entrance

**Sinclair Community College
Centerville Campus**



**Sinclair Community College
Centerville Campus
Gym 144**



90'

55'

**Sinclair Community College
Centerville Campus
Gym 144**

