



**Percussion World Championships
Wright State University's
Ervin J. Nutter Center Site Info
3640 Colonel Glenn Highway
Dayton, OH 45435**

- The facility is located on two floors. The groups will enter and operate on the lower level. Spectators will enter and operate on the upper level.
- Parking for groups and spectators is abundant. There is a \$5 per vehicle parking fee – **cash only**.
- Each group will be allotted 4 parking passes. Buses and trucks do not need a parking pass and will be permitted parking in the Bus/Truck Lot. See maps for details and traffic flow.
- Dressing facilities are very limited. Please come in competitive attire.
- All warm ups will be conducted in parking lot #8. There are two tents outside Director Check In that may be utilized. Please see logistical schedule for tent times.
- Groups are not permitted to run power from any building power access in any parking lots. Please plan to use generators should you want power in warm up or loading.
- The floor is concrete. A floor to ceiling black drape will adorn the back wall of the arena, covering entrances and exits.
- A black tarp will cover the entire competitive floor.
- The contest floor is 72' x 106'. Please see the floor plan for more details.
- Height of the facility is more than adequate.
- Equipment trucks must be moved 45 minutes after a group's contest completion.
- Power Specifications - WGI will provide two 20 amp dedicated circuits on the front and back sidelines.



The following known frequencies will be in use at the World Championships sites:

UD Arena

451 Mhz – 465 Mhz

520 Mhz – 570 Mhz

626 Mhz – 668 Mhz

Nutter Center

451 Mhz – 465 Mhz

596 Mhz – 607 Mhz

626 Mhz – 668 Mhz

Truist Arena

451 Mhz – 465 Mhz

626 Mhz – 668 Mhz

Hobart Arena

451 Mhz – 465 Mhz

800 Mhz

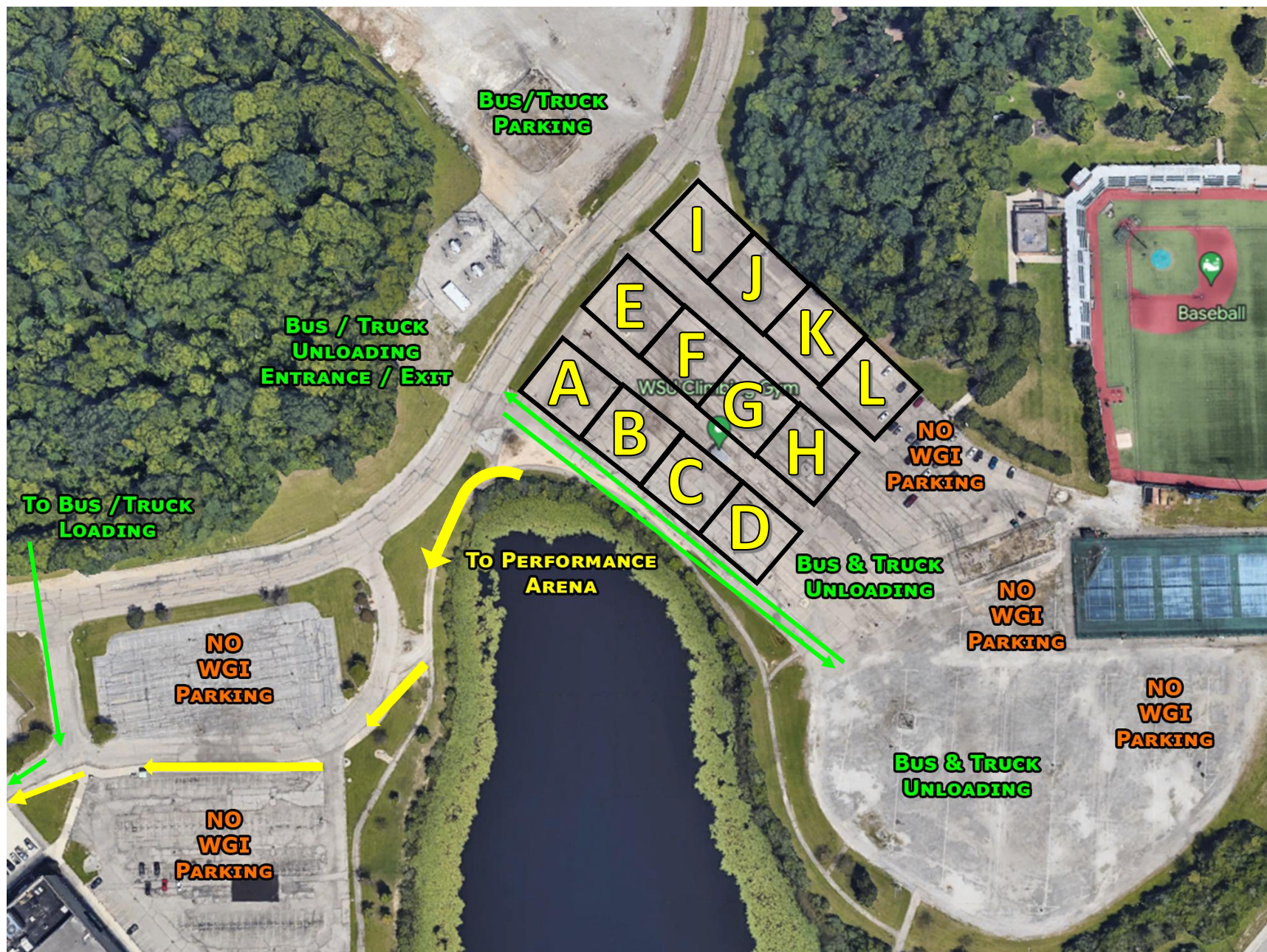
WGI Percussion World Championships

Nutter Center

Dayton OH

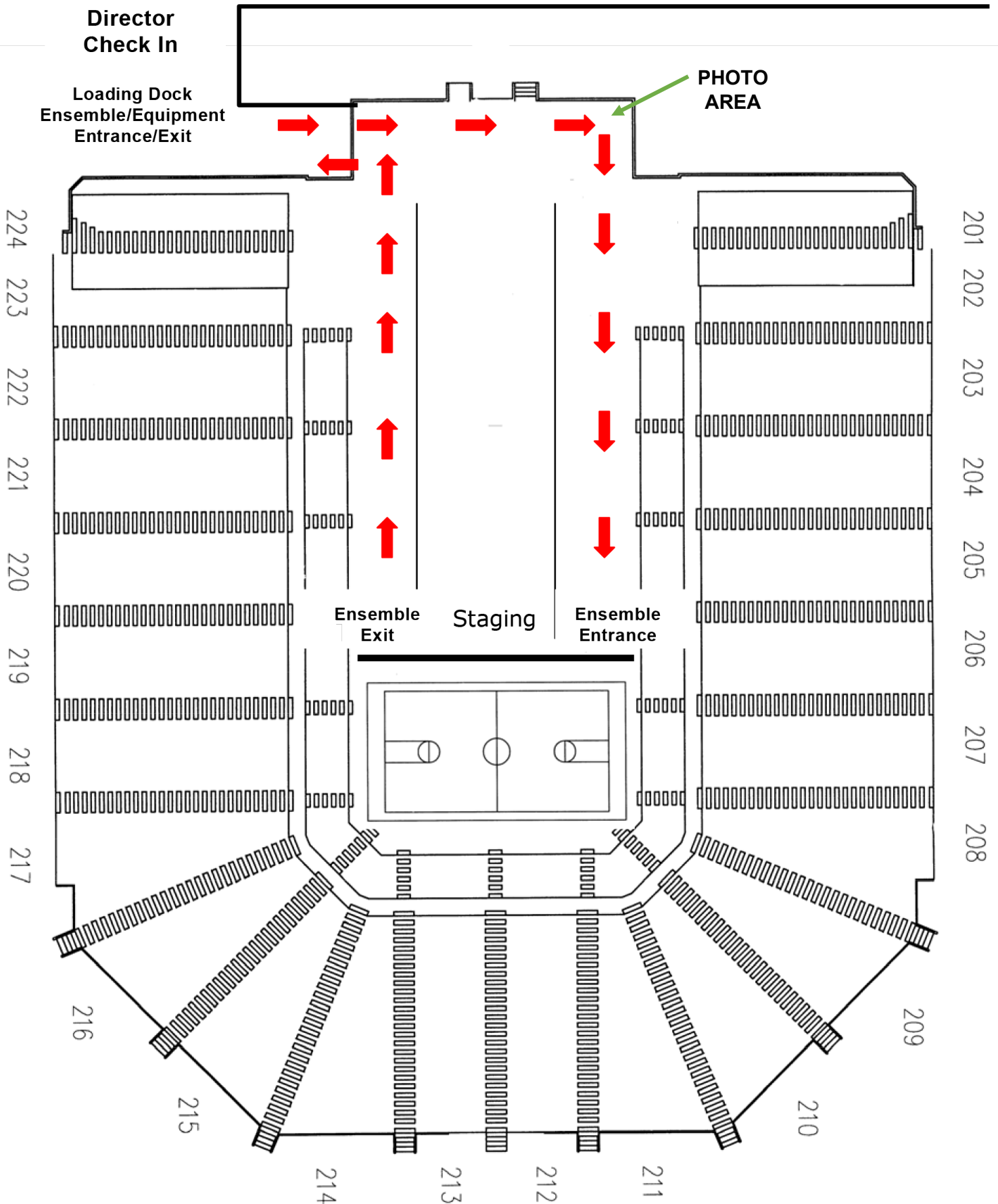


WGI Percussion World Championships
Nutter Center
Dayton OH
Warm Up Spaces Approx. 100' x 86'



WGI PERCUSSION WORLD CHAMPIONSHIPS

NUTTER CENTER SITE FLOW

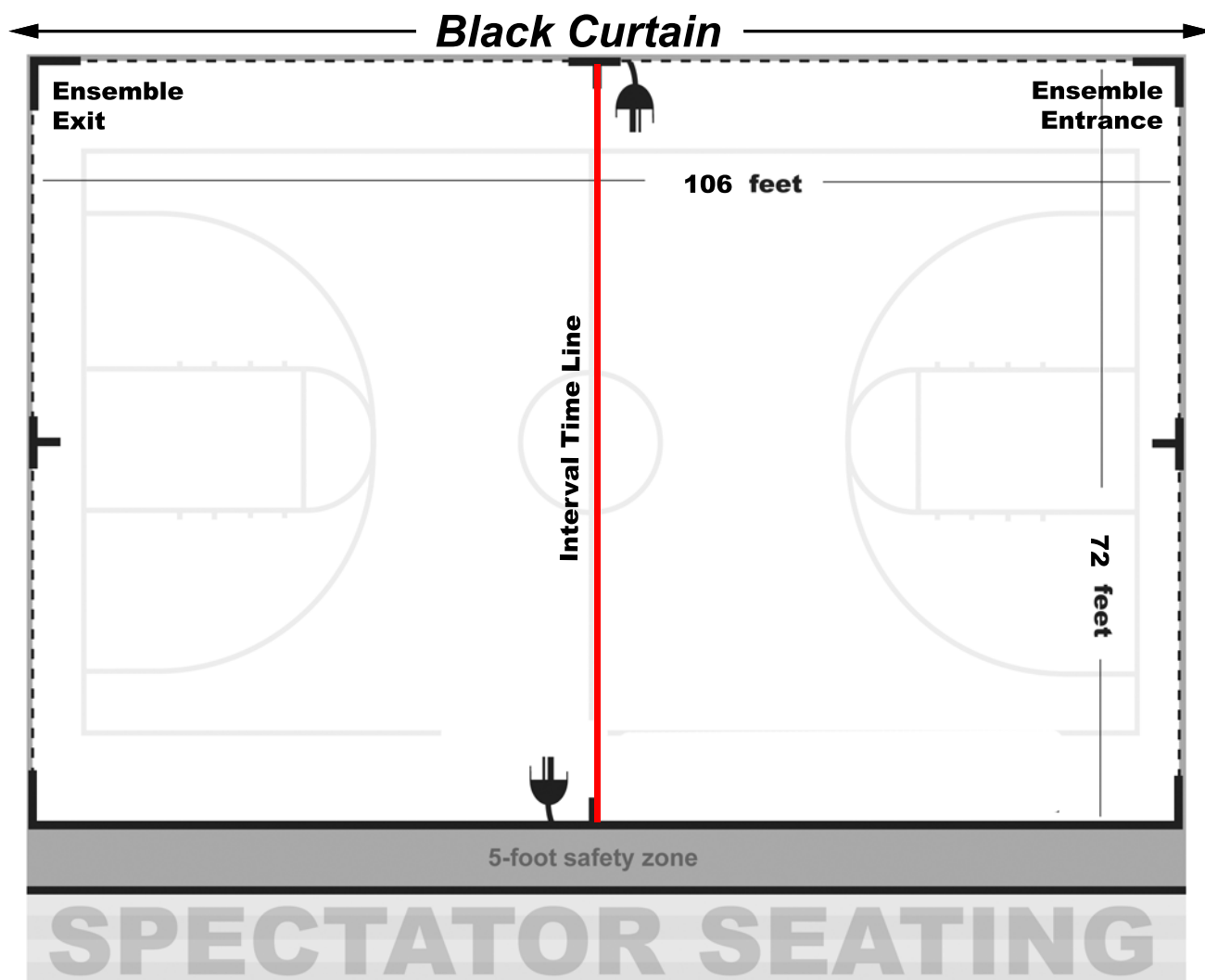




Percussion World Championship Competition Area Wright State University's Nutter Center, Dayton, OH

All WGI contest sites must have a minimum of seventy by one hundred feet (70' x 100') to accommodate a "safety zone" of five (5) feet from any spectator seating. If no spectators are seated on the left and right sides, then the safety zone will be eliminated on the left and right sides of the competition area and extend to a maximum of 72' X 106',

All performing groups must be prepared to perform within the competition area. Floors (tarps) may not extend into the safety zones per rules found in the WGI Adjudication Manual and Rulebook



WGI Percussion World Championships Wright State University's Ervin J. Nutter Center Performance Area

