



**Percussion World Championships  
Hobart Arena Site Info  
255 Adams St.  
Troy, OH 45373**

- Parking for groups and spectators is abundant. See maps for details and traffic flow.
- Each group will be allotted 4 parking passes. Buses and trucks do not need a parking pass and will be permitted parking in the Bus/Truck Lot. See maps for details and traffic flow.
- Dressing facilities are very limited. Please come in competitive attire.
- All warm ups will be conducted in the parking lot on the southwest side of the building. There are two tents outside that may be utilized. Please see the logistical schedule for your group's tent times.
- Groups are not permitted to run power from any building power access in any parking lots. Please plan to use generators should you want power in warm up or loading.
- Groups will push behind the performance area curtain to get to the ready line. This space is 10 ft wide. Groups may also utilize the back hallway – please see the size restrictions located in this packet.
- Equipment trucks must be moved 60 minutes after a group's performance has completed. There is remote parking available at Duke Park (please see attached map). **There will not be a shuttle service between Duke Park and the arena - please plan accordingly.**
- The performance floor will be concrete. A black tarp will cover the entire competitive floor.
- The competition area is 72' x 106'. Please see the floor plan for more details.
- A floor to ceiling black drape will adorn the back wall of the arena, covering entrances and exits.
- Power Specifications - WGI will provide two 20 amp dedicated circuits on the front and back sidelines.



**The following known frequencies will be in use at the World Championships sites:**

**UD Arena**

451 Mhz – 465 Mhz

520 Mhz – 570 Mhz

626 Mhz – 668 Mhz

**Nutter Center**

451 Mhz – 465 Mhz

596 Mhz – 607 Mhz

626 Mhz – 668 Mhz

**Truist Arena**

451 Mhz – 465 Mhz

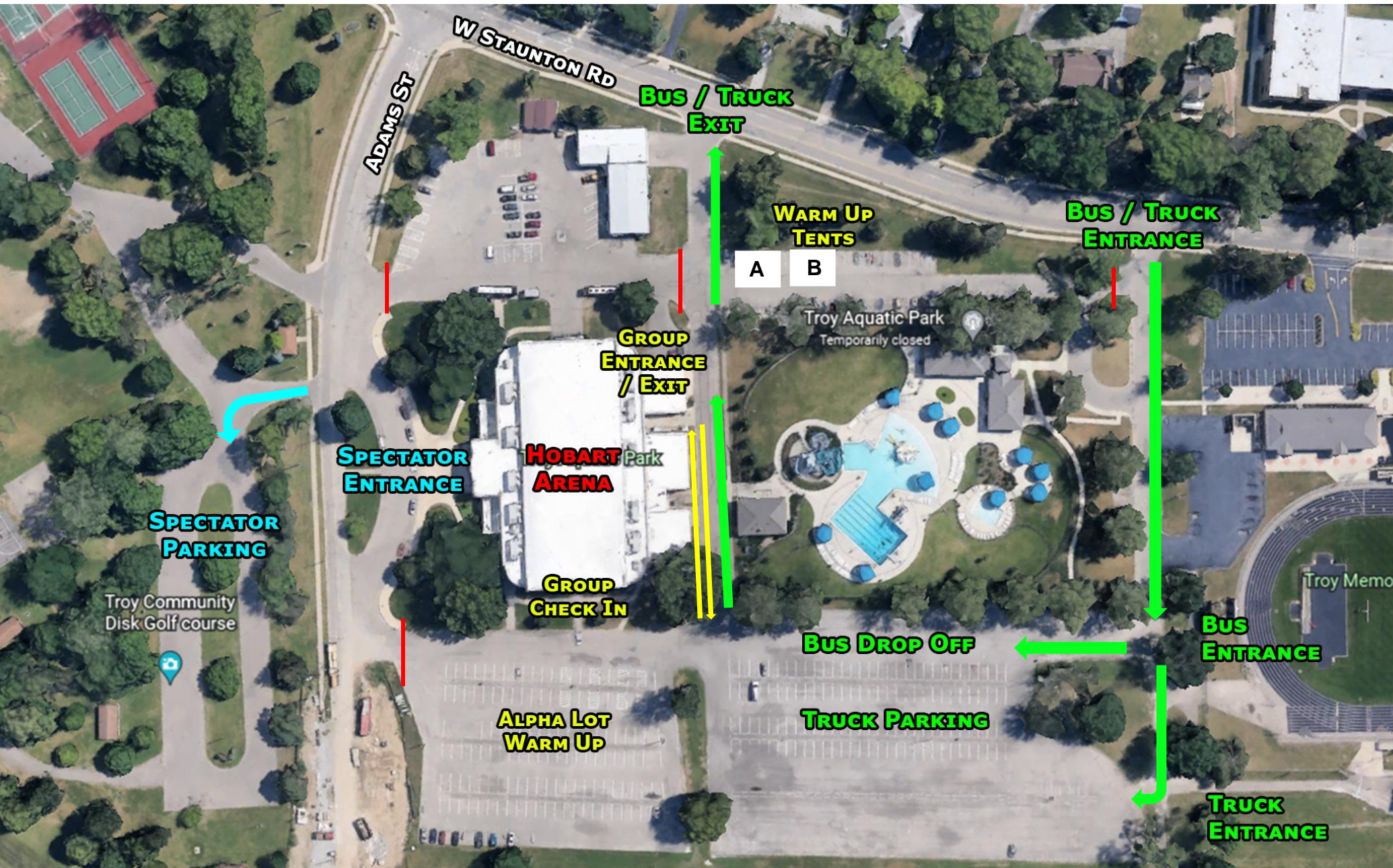
626 Mhz – 668 Mhz

**Hobart Arena**

451 Mhz – 465 Mhz

800 Mhz

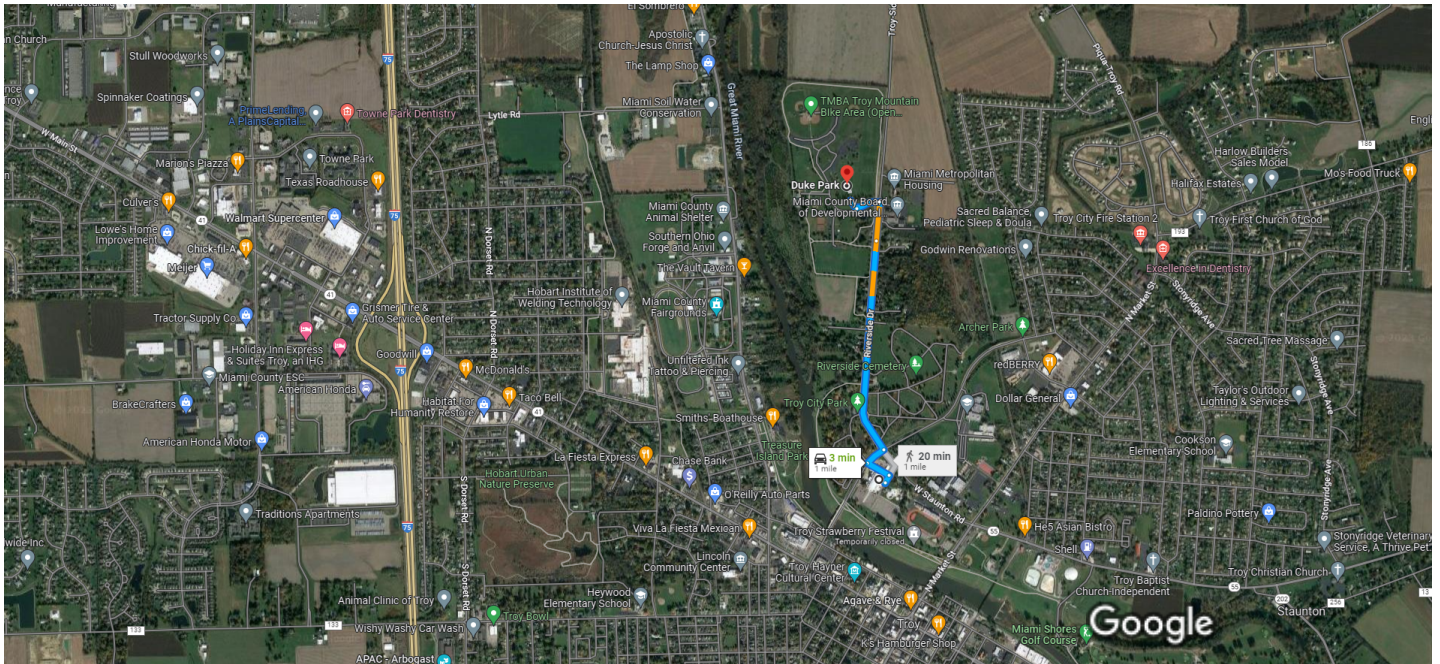
WGI Percussion World Championships  
Hobart Arena  
Troy OH







255 Adams St, Troy, OH 45373 to Duke Park, 1670 Troy-Sidney Rd, Troy, OH 45373 Drive 1.0 mile, 3 min



Imagery ©2023 Maxar Technologies, U.S. Geological Survey, USDA/FPAC/GEO, Map data ©2023 1000 ft

255 Adams St  
Troy, OH 45373

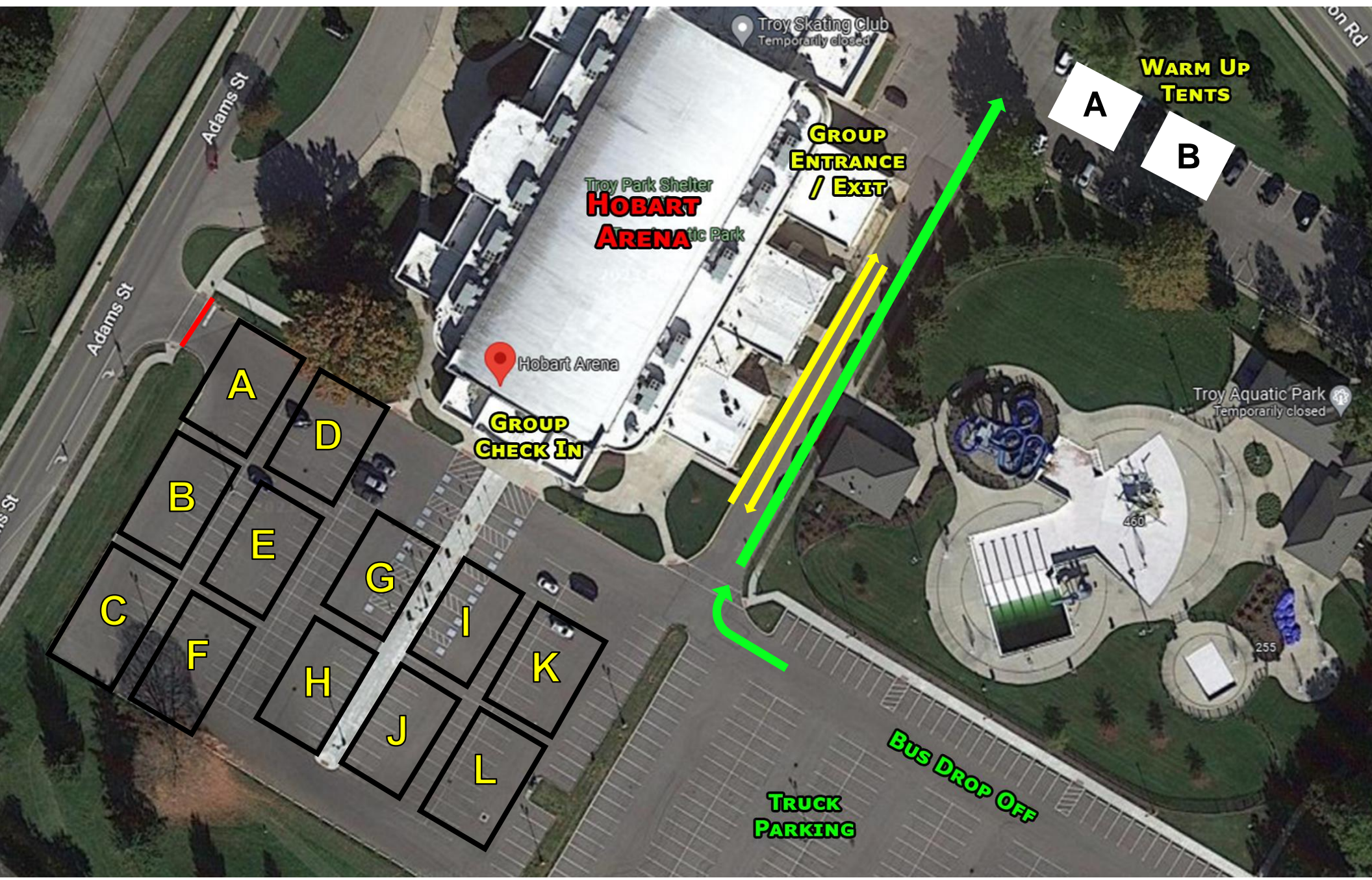
## WGI Percussion World Championships Hobart Arena to Duke Park (Bus and Truck Parking)

- ↑ 1. Head northeast toward Adams St  
138 ft
- ↶ 2. Turn left toward Adams St  
400 ft
- ↷ 3. Turn right onto Adams St  
338 ft
- ↶ 4. Turn left onto Riverside Dr  
0.6 mi
- ↑ 5. Continue onto Troy-Sidney Rd  
0.1 mi
- ↶ 6. Turn left  
394 ft
- ↷ 7. Turn right  
161 ft

Duke Park  
1670 Troy-Sidney Rd, Troy, OH 45373

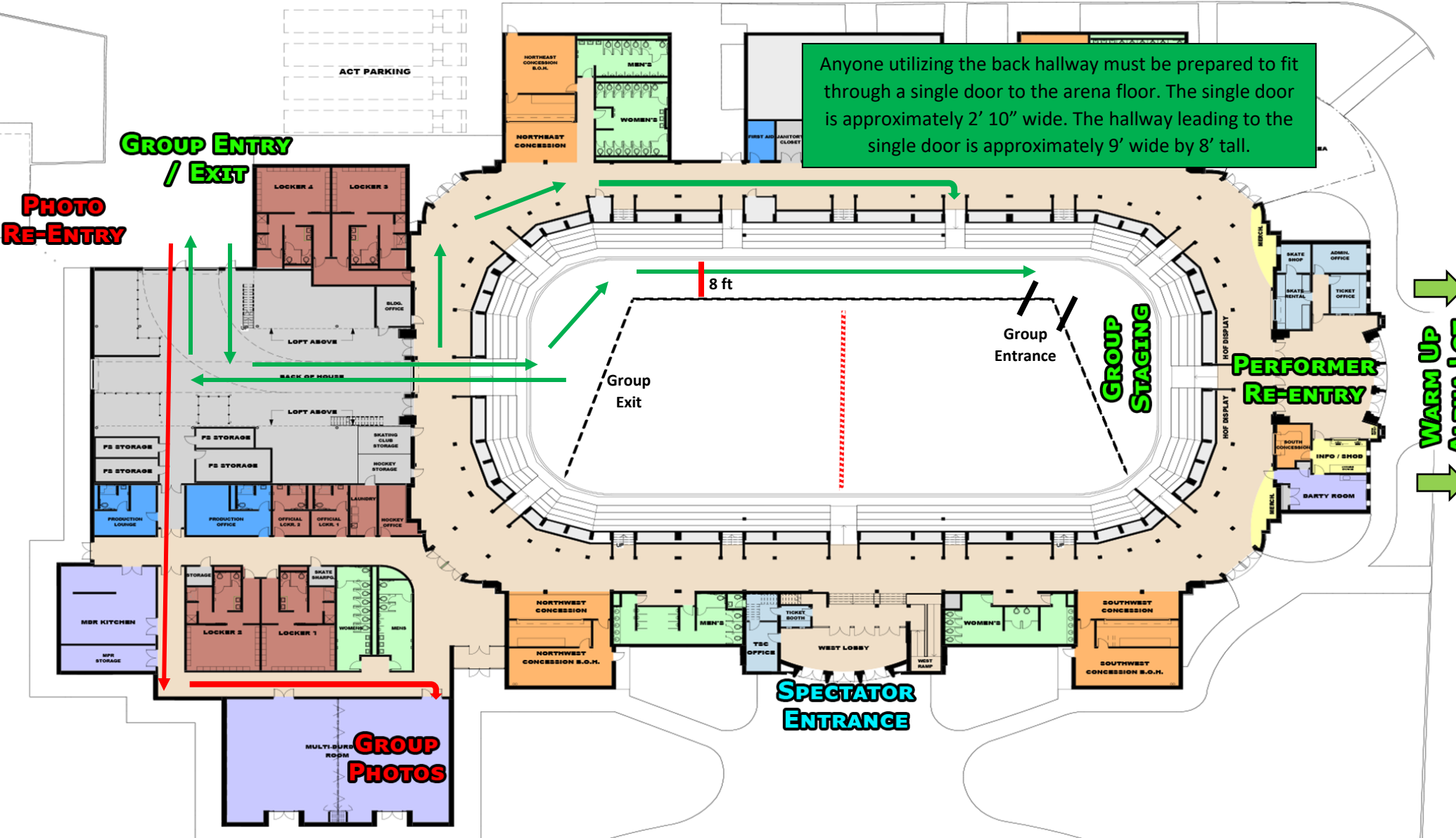


**WGI Percussion World Championships**  
**Hobart Arena**  
**Troy OH**  
**Warm Up Spaces Approx. 70' x 50'**





WGI Percussion World Championships  
Hobart Arena  
Troy OH



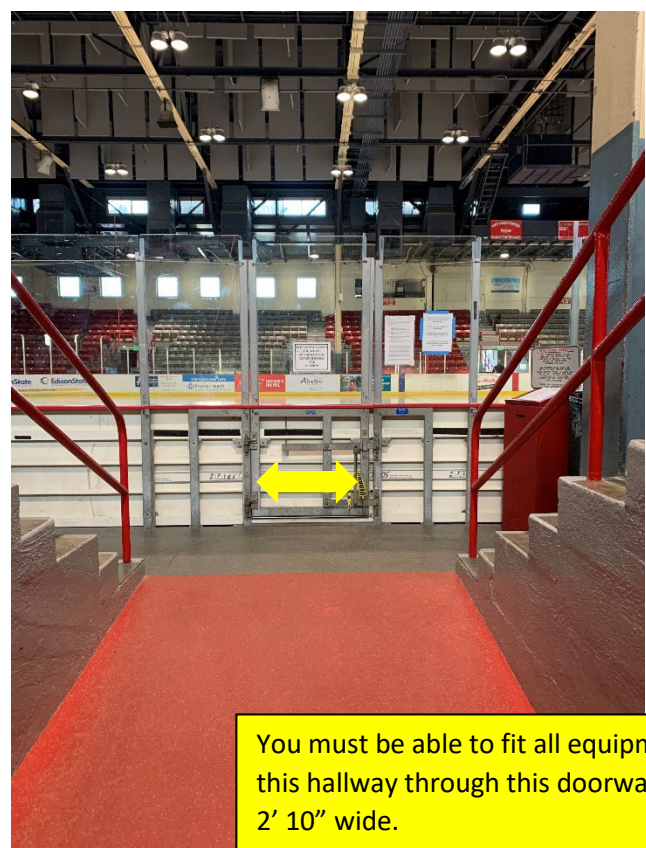
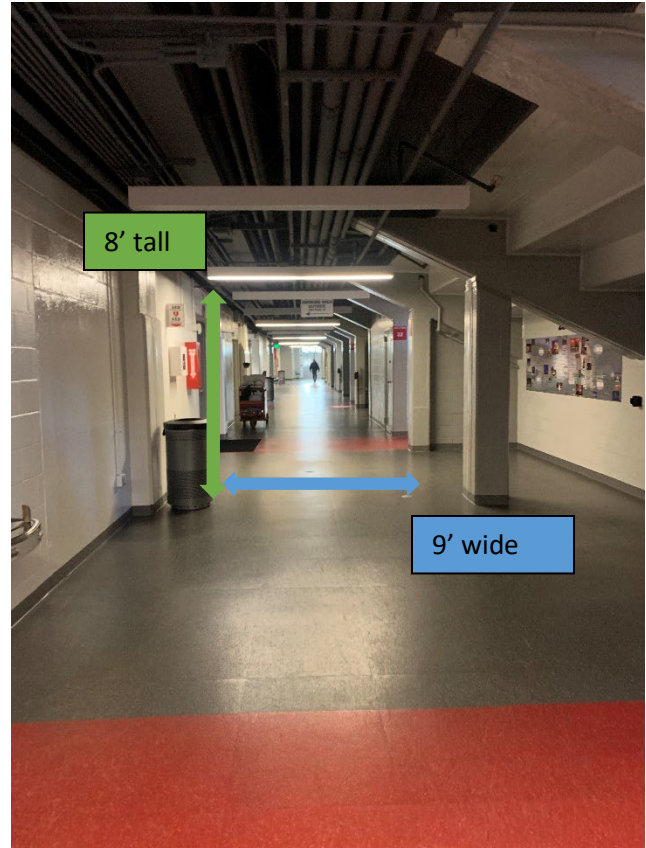
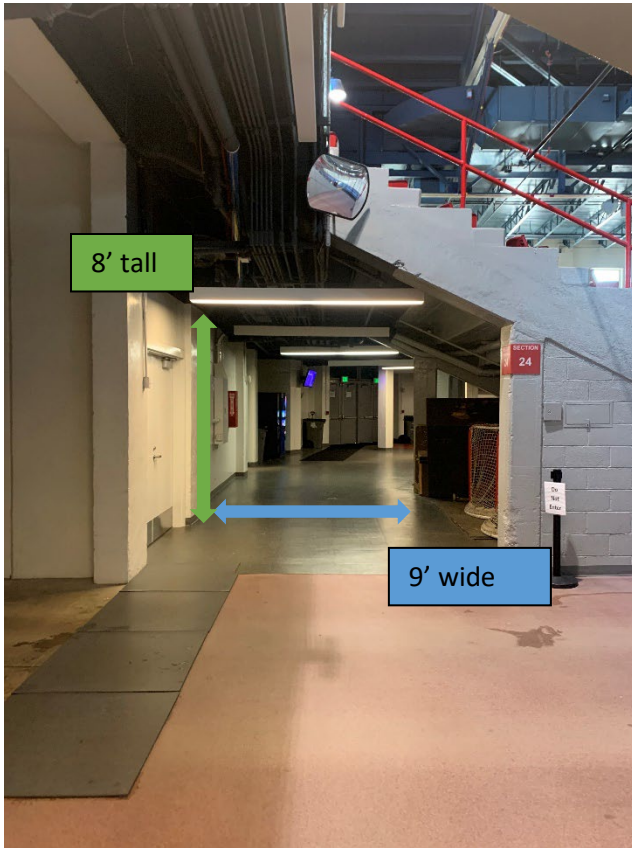
Anyone utilizing the back hallway must be prepared to fit through a single door to the arena floor. The single door is approximately 2' 10" wide. The hallway leading to the single door is approximately 9' wide by 8' tall.

# WGI Percussion World Championships

Hobart Arena

Troy OH

## Back Hallway Photos & Dimensions



You must be able to fit all equipment in this hallway through this doorway that is 2' 10" wide.



**Percussion World Championships Competition Area  
Hobart Arena  
Troy, OH**

All WGI contest sites must have a minimum of seventy by one hundred feet (70' x 100') to accommodate a "safety zone" of five (5) feet from any spectator seating. If no spectators are seated on the left and right sides, then the safety zone will be eliminated on the left and right sides of the competition area and extend to a maximum of 72' x 106'.

All performing groups must be prepared to perform within the competition area. Floors (tarps) may not extend into the safety zones per rules found in the WGI Adjudication Manual and Rulebook.

