

WGI World Championship Practice Venue Information

Sinclair Community College

University address – 444 West 3rd Street, Dayton

Main Gym and Fieldhouse Venues are located off of S. Robert Drive

- 📖 Groups may arrive **no more than 30 minutes prior** to their scheduled practice start time. If group is the first one in the building, the building will be open 5-10 minutes prior to your start time. Start times for this practice venue are no earlier than 6 am.
- 📖 Please see maps for parking details. No vehicles may be left in the unloading/loading area near the venue.
 - Cars/Vans may park in the free parking garage across the street or may park on the street at metered parking.
 - Buses/Box Trucks must park in lot M, toward the back of the lot.
 - Semi-Trailers will need to go to UD to park for the duration of your group's practice time.
- 📖 Prior to the groups' scheduled practice start time, groups may use **interior space** to do the following:
 - Use the restroom
 - Load in their equipment to wait for their available practice space
 - Stretch in the hallways as long as they are not blocking pathways
- 📖 Prior to the groups' scheduled practice start time, groups may use **exterior space** of the building to do the following:
 - Unload
 - Stretch
 - Spin Equipment
 - Eat a meal
- 📖 After the group's practice time has concluded, groups may use the facility restrooms to prepare for their performance. *(Please remember to clean up after yourselves.)*
- 📖 Please pay special attention to the maps in this packet. Entrance into the facility is very specific.

Practice Facility Spec Sheet

Practice Facility: _____

Type of facility: Single Gym *Fieldhouse Style:* Gym or Soccer

Open Space Tennis Court Soccer Field

How many groups will potentially be in this facility at the same time? _____

Is there any place for instructors to view the practice venue from above (*ie bleachers or a stage*)? YES NO

Entrance/Exit Door Dimensions: _____

Center Bar in entrance door: YES NO N/A Removable Center Bar: YES NO

Facility Dimensions - Width wall to wall: _____ Length wall to wall: _____

Approximate Ceiling Height: _____

Obstructions in the area: _____

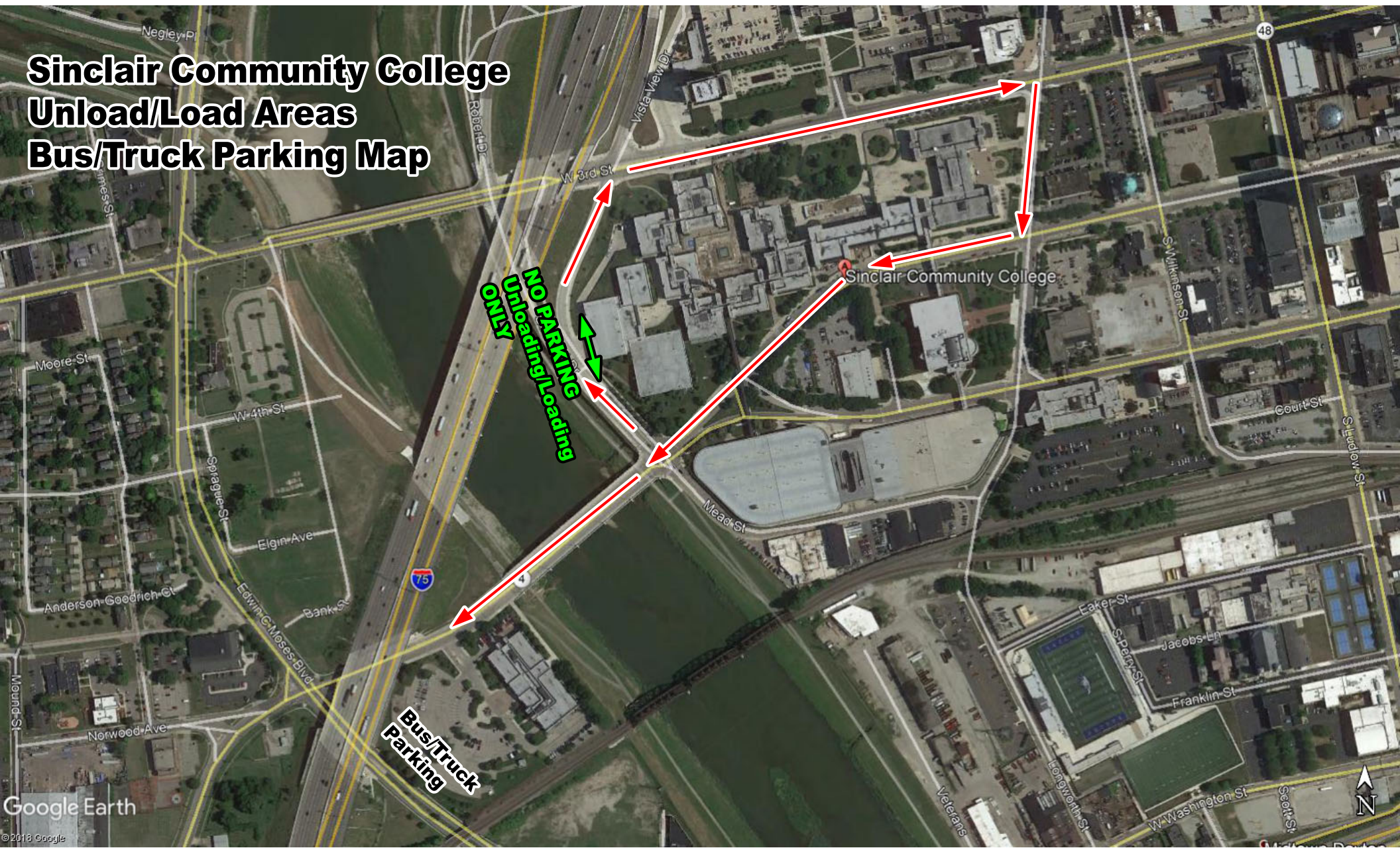
Stairs to contend with in any part of the facility: _____

Exit Door Dimensions (if different than entrance): _____

Center Bar in exit door: YES NO N/A Removable Center Bar: YES NO

Comments: _____

Sinclair Community College Unload/Load Areas Bus/Truck Parking Map



Sinclair Community College

To Bus/Truck
Parking

No Thru Traffic

36" Door
Entrance

No Music/
No Drumming

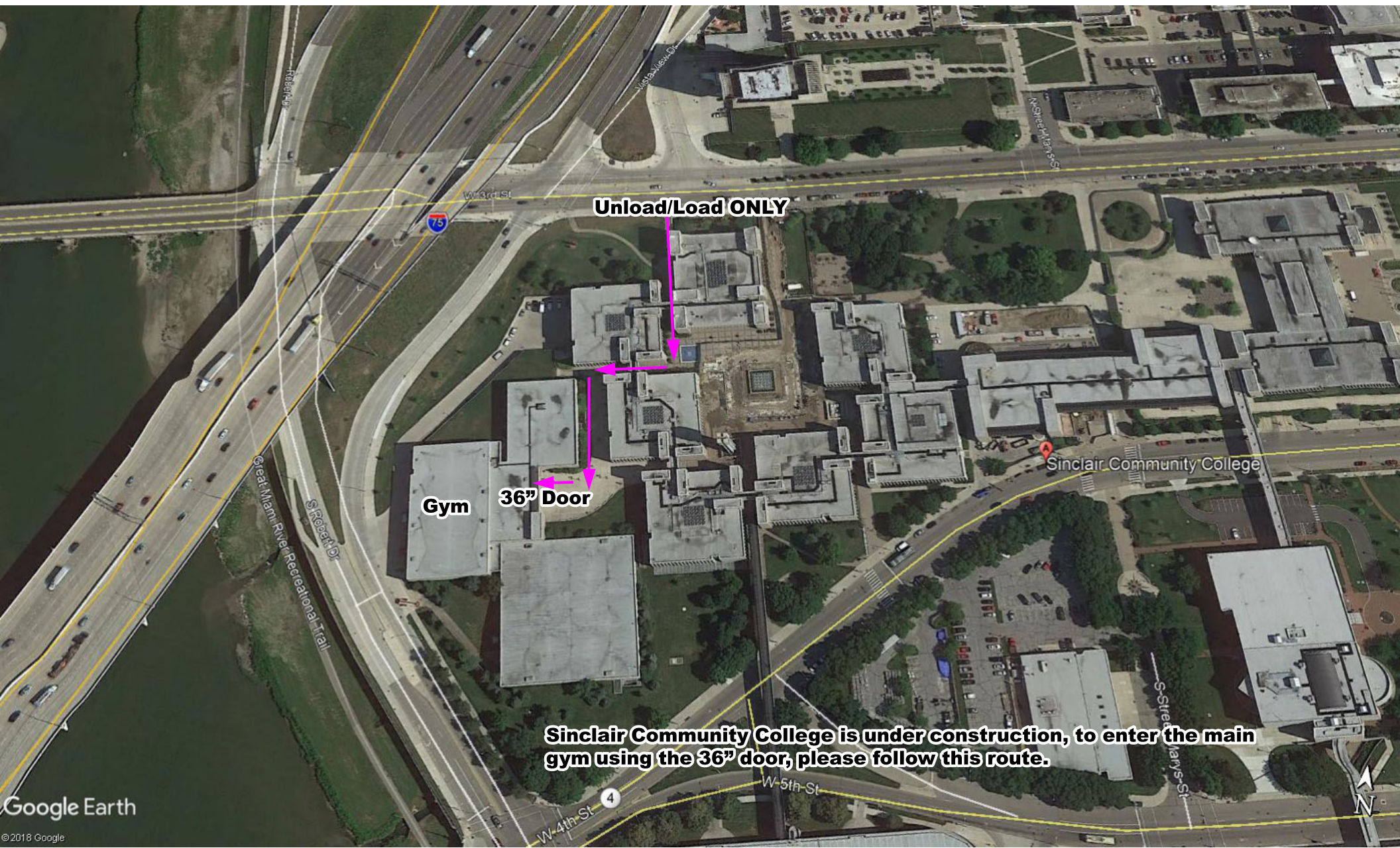
Gym

Unload/Load ONLY

Fieldhouse

No Truck/
Buses

Garage Door
Entrance
Steep Grade



Unload/Load ONLY

Gym

36" Door

Sinclair Community College

Sinclair Community College is under construction, to enter the main gym using the 36" door, please follow this route.



S Robert Dr

Dayton, Ohio

Google

Street View - Dec 2015

**Sinclair Community College
Main Gym Entrance**

**32" doors enter directly
to the main gymnasium**

**Unload/Load
ONLY**

Google

Image capture: Dec 2015 © 2019 Google United States Terms Report a problem

Sinclair Community College Main Gym Entrance



32"

32"

**Measures full space
with the door open**

Sinclair Community College Main Gym

