



**Winds World Championships  
Wright State University's  
Ervin J. Nutter Center Site Info  
3640 Colonel Glenn Highway  
Dayton, OH 45435**

- The facility is located on two floors. The ensembles will enter and operate on the lower level. Spectators will enter and operate on the upper level.
- Parking for ensembles and spectators is abundant. There is a \$5 per vehicle parking fee. Each ensemble will be allotted 3 parking passes. See maps for details and traffic flow.
- Dressing facilities are very limited. Please come in competitive attire.
- All warm ups will be conducted in parking lot #8. There are two tents outside Performance Check In that may be utilized. Please see logistical schedule for tent times.
- The floor is concrete. A floor to ceiling black drape will adorn the back wall of the arena, covering entrances and exits.
- A black tarp will cover the entire competitive floor.
- The contest floor is 72' x 106'. Please see the floor plan for more details.
- Height of the facility is more than adequate.
- Equipment trucks must be moved 45 minutes after an ensembles contest completion.
- Power Specifications - WGI will provide two 20 amp dedicated circuits on the front and back sidelines.
- Please report to Performance Check In no earlier than your listed report time. Performance Check In times are listed in the logistical schedule. Participant wristbands will allow entrance at regular doors.

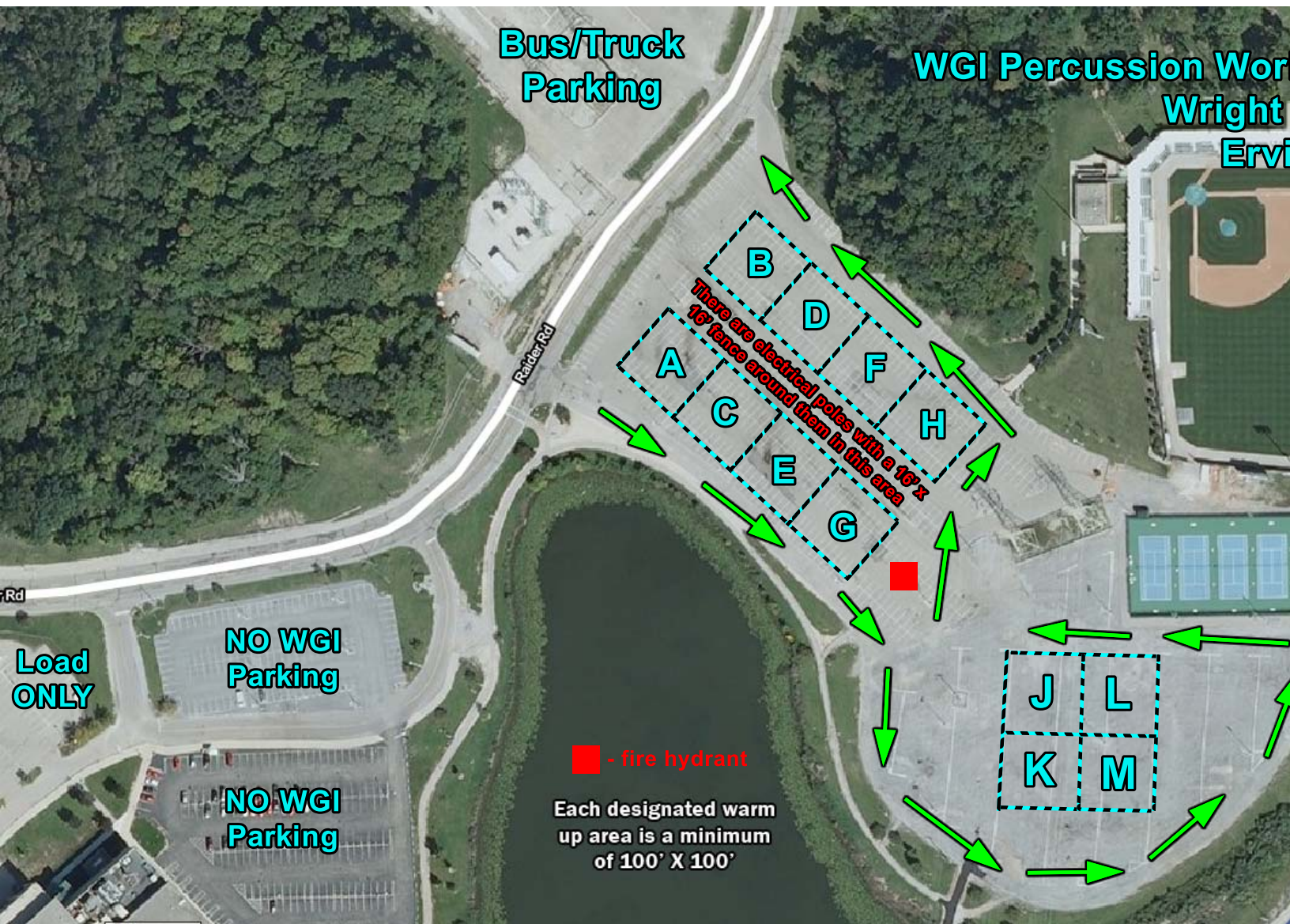
***REMINDER - Your ensemble MUST check in at Championship Headquarters in the Boesch Lounge at UD ARENA prior to your prelims performance at the Nutter Center to pick up all contest materials. Those ensembles who do not check in at Championship Headquarters may be denied entrance to the facility.***



**WGI Percussion World Championships**  
**Wright State University's**  
**Ervin J. Nutter Center**

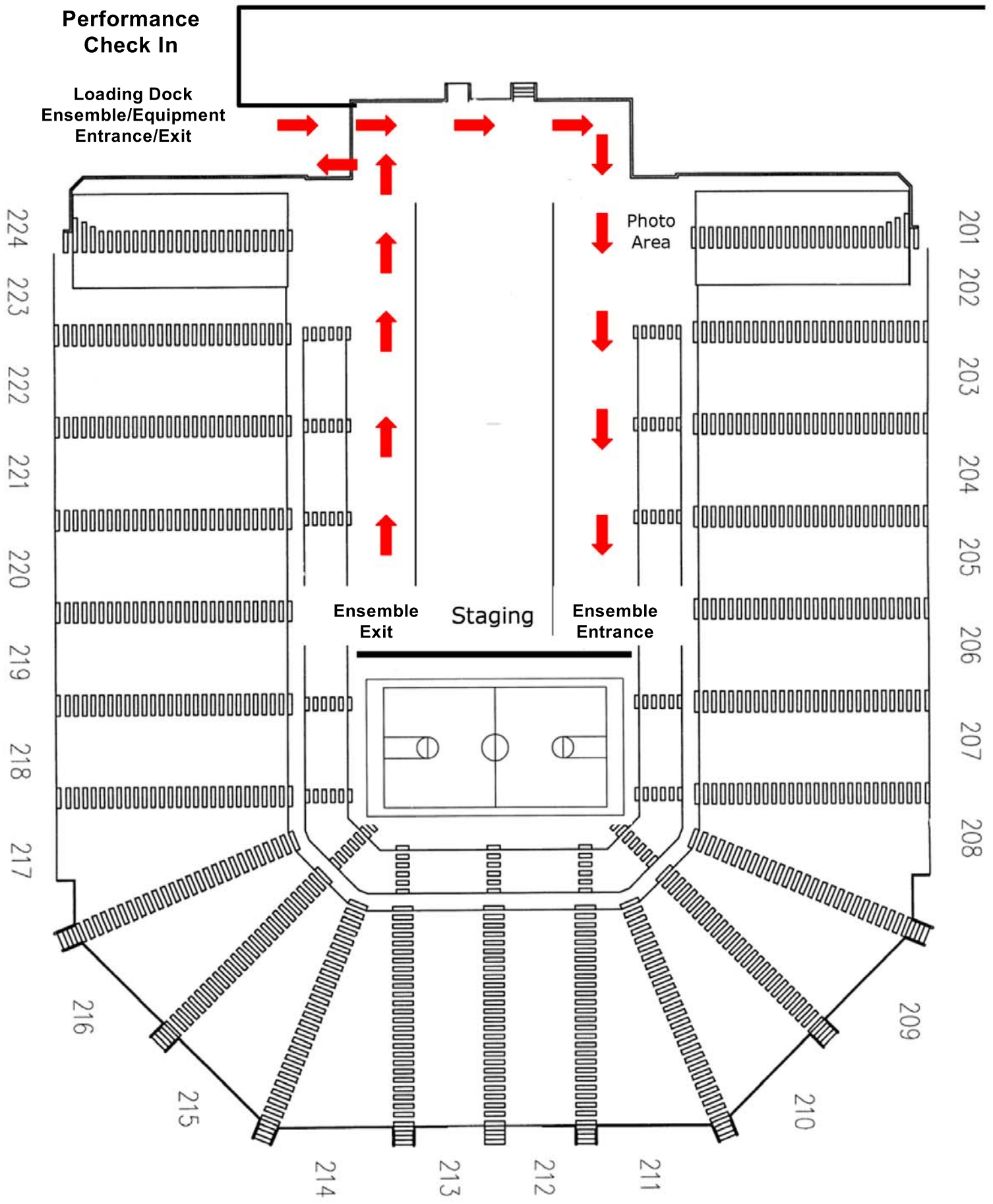






# WGI PERCUSSION WORLD CHAMPIONSHIPS

## NUTTER CENTER SITE FLOW

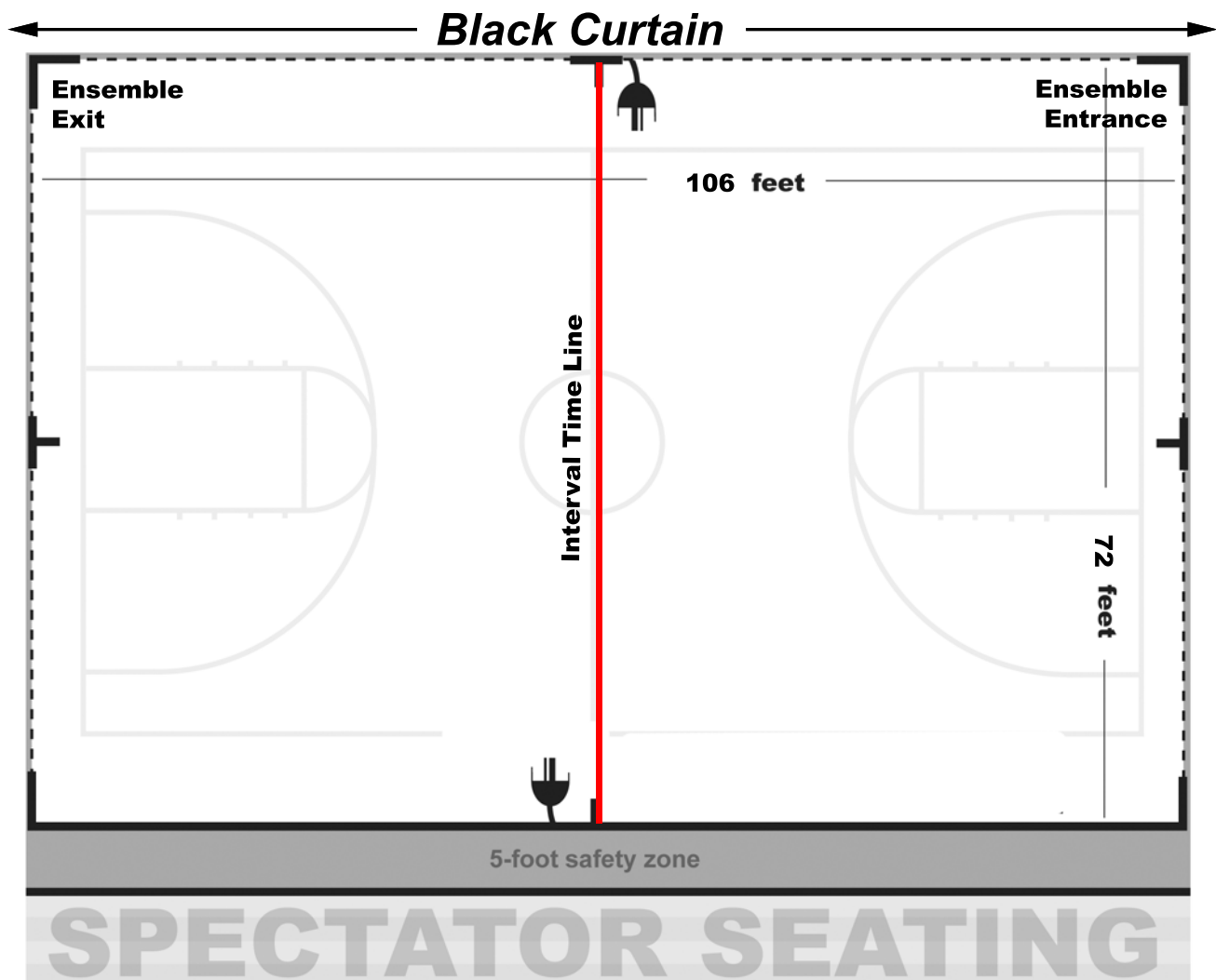




## Percussion World Championship Competition Area Wright State University's Nutter Center, Dayton, OH

All WGI contest sites must have a minimum of seventy by one hundred feet (70' x 100') to accommodate a "safety zone" of five (5) feet from any spectator seating. If no spectators are seated on the left and right sides, then the safety zone will be eliminated on the left and right sides of the competition area and extend to a maximum of 72' X 106',

All performing groups must be prepared to perform within the competition area. Floors (tarps) may not extend into the safety zones per rules found in the WGI Adjudication Manual and Rulebook





# WGI Percussion World Championships Wright State University's Ervin J. Nutter Center Performance Area

